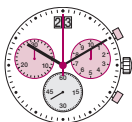


Cal. 8040.N



Cal. 8040.B

RONDA is a supplier of watch movements including their operating instructions. Please refer to the watch retailer, service centre or manufacturer, should you have any questions regarding the watch. All relevant contact information can be found in your sales and/or guarantee documents.

English User's Manual

Battery type: 395 (diameter 9.5mm x 2.6mm / SR 927 SW)
Accuracy: +20 / -10 seconds per month



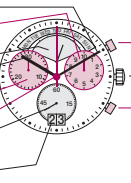
Description of the display and control buttons

Display elements

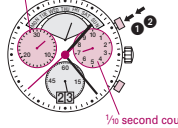
Minute hand
1/2 second counter
(hour counter after 30 minutes)
Day Retrograde
Hour hand
Minute counter
Centre stop-second
Second hand
Date

Control buttons

Push-button A
Crown
Push-button B



Minute counter Push-button A

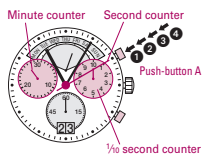


Chronograph: Basic function

(Start / Stop / Reset)

Example:

- Start:** Press push-button A.
- Stop:** to stop the timing, press push-button A once more and read the three chronograph counters:
4 min / 38 sec / 1/2 sec
- Zero positioning:**
Press push-button B.
(The three chronograph hands will be reset to their zero positions).



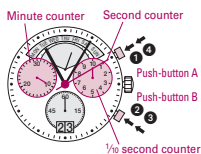
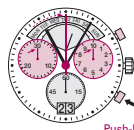
Chronograph: Accumulated timing

Example:

- Start:** (start timing)
- Stop:** (e.g. 15 min 5 sec following 1)
- Restart:** (timing is resumed)
- Stop:** (e.g. 13 min 5 sec following 3)
= 28 min 10 sec
(The accumulated measured time is shown)

- Reset:**
The three chronograph hands are returned to their zero positions.

Please note:
* Following 4, the accumulation of the timing can be continued by pressing push-button A (Restart / Stop, Restart / Stop, ...)

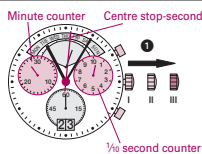


Chronograph: Intermediate or interval timing

Example:

- Start:** (start timing)
- Display interval:**
e.g. 10 minutes 10 seconds (timing continues in the background)
- Making up the measured time:**
(the three chronograph hands are quickly advanced to the ongoing measured time).
- Stop:** (Final time is displayed)
- Reset:**
The three chronograph hands are returned to their zero position

Please note:
* Following 5, further intervals or intermediate times can be displayed by pressing push-button B (display interval / make up measured time, ...)

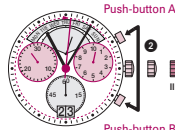


Adjusting the chronograph hands to zero position

Example:

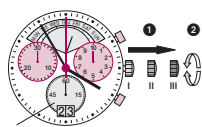
One or several chronograph hands are not in their correct zero positions and have to be adjusted (e.g. following a battery change).

- Pull out the crown to position III (all three chronograph hands are in their correct or incorrect zero position).
- Keep push-buttons A and B depressed simultaneously for at least 2 seconds (the centre stop-second rotates by 360° → corrective mode is activated).



- Adjusting the centre stop second**
Single step: A 1 x short
Continuous: A long
- Adjusting the next hand B:** B
- Adjusting the 1/2 second counter hand (position 3h)**
Single step: A 1 x short
Continuous: A long
- Adjusting the next hand B:** B
- Adjusting the minute counter hand (position 5h)**
Single step: A 1 x short
Continuous: A long

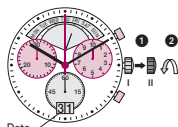
- Returning the crown to position I
Termination of the chronograph hands adjustment (can be carried out at any time).



Setting the time

- Pull out the crown to position III (the watch stops).
- Turn the crown until you reach the correct time 8:45.
- Push the crown back into position I.

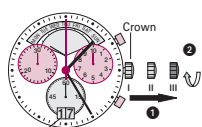
Please note:
* In order to set the time to the exact second, 1 must be pulled out when the second hand is in position «60». Once the hour and minute hands have been set, 2 must be pushed back into position I at the exact second.



Setting the date (quick mode)

- Pull out the crown to position II (the watch continues to run).
- Turn the crown backwards until the correct date 01 appears.
- Push the crown back into position I.

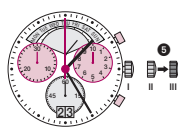
Please note:
During the date changing phase between 9 PM and 12 PM, the date must be set to the date of the following day.
An extreme acceleration in setting the date with quick mode can induce a false date indication. The synchronization is re-established by setting the date from 01 till 31 (crown in position II).



Setting the date, weekday (8040.N), time

Example:
– Date / time on the watch: 17 / 01:25 / MON
– Present date / time: 23 / 20:35 / SAT

- Pull out the crown to position III (the watch stops).
- Turn the crown until yesterday's weekday FRI appears.
- Push the crown to position II.
- Turn the crown backwards until yesterday's date appears 22.



- Pull out the crown to position III (the watch stops).
- Turn the crown until the correct date 23 and weekday SAT appears.
- ** Continue to turn the crown until the correct time 8:35 PM appears.
- Push the crown back into position I.

Please note:
* To set your watch to the exact second, please refer to the chapter entitled «setting the time».
** Please observe the AM/PM clock rhythm.

