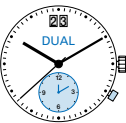
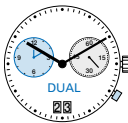


Cal. 4210.B



Cal. 4220.B

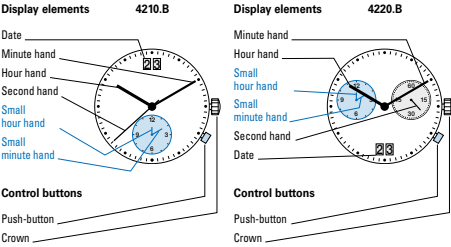


English  
User's Manual

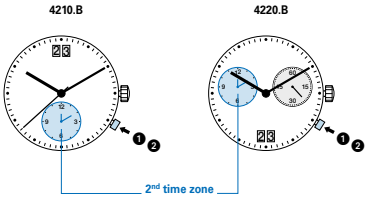
Battery type: 395 (diameter 9.5mm x 2.6mm / SR 927 SW)  
Accuracy: +20 / -10 seconds per month



Description of the display and control buttons



Setting the 2nd time zone

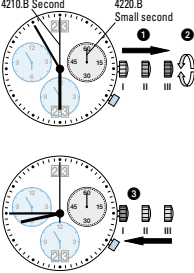


Any 2nd time zone can be set using the small hour hand and small minute hand.

- 1 Activation: Press the push button for at least 2 seconds.  
As soon as the small minute hand jumps forward one minute, this mode of operation is activated.
- 2 Brief pressing: (less than 1 second)  
Moves forward individual minutes.  
Medium pressing: (1 to 2 second)  
Moves forward 1 hour.  
Long pressing (longer than 2 seconds)  
The time zone is moved forward until the push button is released.

Please note:  
If the push button is not pushed for ten seconds, the setting mode is deactivated.  
Please see point no 1 for activation.

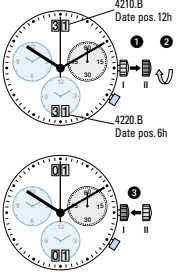
Setting the time



- 1 Pull out the crown to position III (the watch stops).
- 2 Turn the crown until you reach the correct time 8:45.
- 3 Push the crown back into position I.

Please note:  
\* In order to set the time to the exact second, 1 must be pulled out when the second hand is in position «60». Once the hour and minute hands have been set, 3 must be pushed back into position I at the exact second.

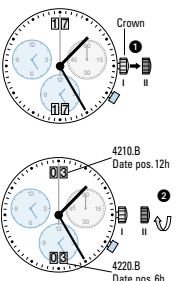
Setting the date (quick mode)



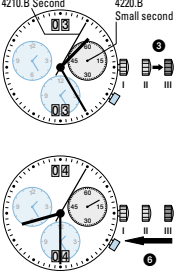
- 1 Pull out the crown to position II (the watch continues to run).
- 2 Turn the crown until the correct date 01 appears.
- 3 Push the crown back into position I.

Please note:  
During the date changing phase between 9 PM and 12 PM; the date must be set to the date of the following day.  
An extreme acceleration in setting the date with quick mode can induce a false date indication. The synchronization is re-established by setting the date from 01 till 31 (crown in position II).

Setting the date/time



- Example:  
- Date / time on the watch: 01 / 1:25 AM  
- Present date / time: 04 / 8:30 PM
- 1 Pull out the crown to position II (the watch continues to run).
- 2 Turn the crown until yesterday's date appears 03.



- 3 Pull out the crown to position III (the watch stops).
- 4 Turn the crown until the correct date 04 appears.
- 5 Continue to turn the crown until the correct time 8:30 PM appears.
- 6 Push the crown back into position I.

Please note:  
\* To set your watch to the exact second, please refer to the chapter entitled «setting the times».  
\*\* Please observe the AM/PM clock rhythm.