

# MIYOTA

## MOVEMENT SPECIFICATIONS

### CAL. 5R21/5R32 ANALOG QUARTZ MOV'T

BY CITIZEN WATCH CO., LTD. JAPAN

### **SUPER SMALL SIZE 3-3/4 Ligne Quartz, (0) JEWELS**

MANUFACTURED IN JAPAN

#### 1. BASIC SPECIFICATION

(1) CAL. NO.

\*TO CONFIRM WITH MOV'T DRAWING ATTACHED

CALIBRE	5R21	5R32
Ligne	3-3/4	
Size*mm	9.0 × 13.2 × Φ 13.5mm	
Total height	1.90mm	2.00mm
Hands	2 HANDS	3 HANDS
Battery life	4 YEARS	2 Years
Battery	SR416SW	

(2) Time standard

Type of quartz : Tuning fork type quartz crystal

Frequency : 32,768Hz

Accuracy : **+/-20 s/month** worn under normal circumstances

(3) Battery installed

Type of battery : Silver oxide SR416SW (JAPAN-MADE)

(4) Additional Mechanisms & Features:

**Second hand stopping at optional position**

**Power conservative switch**

(5) Balanceable weight of hands

	5R21	5R32
Minute hand	Maximum 0.15 $\mu$ N·m	Maximum 0.30 $\mu$ N·m
Second hand		Maximum 0.015 $\mu$ N·m

**2. SEPARATED PARTS**

	5R21 / 5R32
Setting stem	065-413
Length of movement center to stem end...	13.5mm
Thread.....	$\Phi$ 0.7 x 9.0mm

**3. OTHERS**

**\* Measurement of time rate**

The unit time of measurement must be set at "10s", "20s", "30s" .....  
(not "15s", "25" .....)

And the measurement must be carried out in state of a complete watch.

**\* Marking on movement**

**MIYOTA CO.  
NO JEWEL  
5R21 JAPAN**

**MIYOTA CO.  
NO JEWEL  
5R32 JAPAN**

**\* Typical clearance**

Mov't - Caseback	min 150 $\mu$ m or more
Top of hands - Glass	300 - 450 $\mu$ m *

\* depending and subject to the glass and case structure, and length of hands

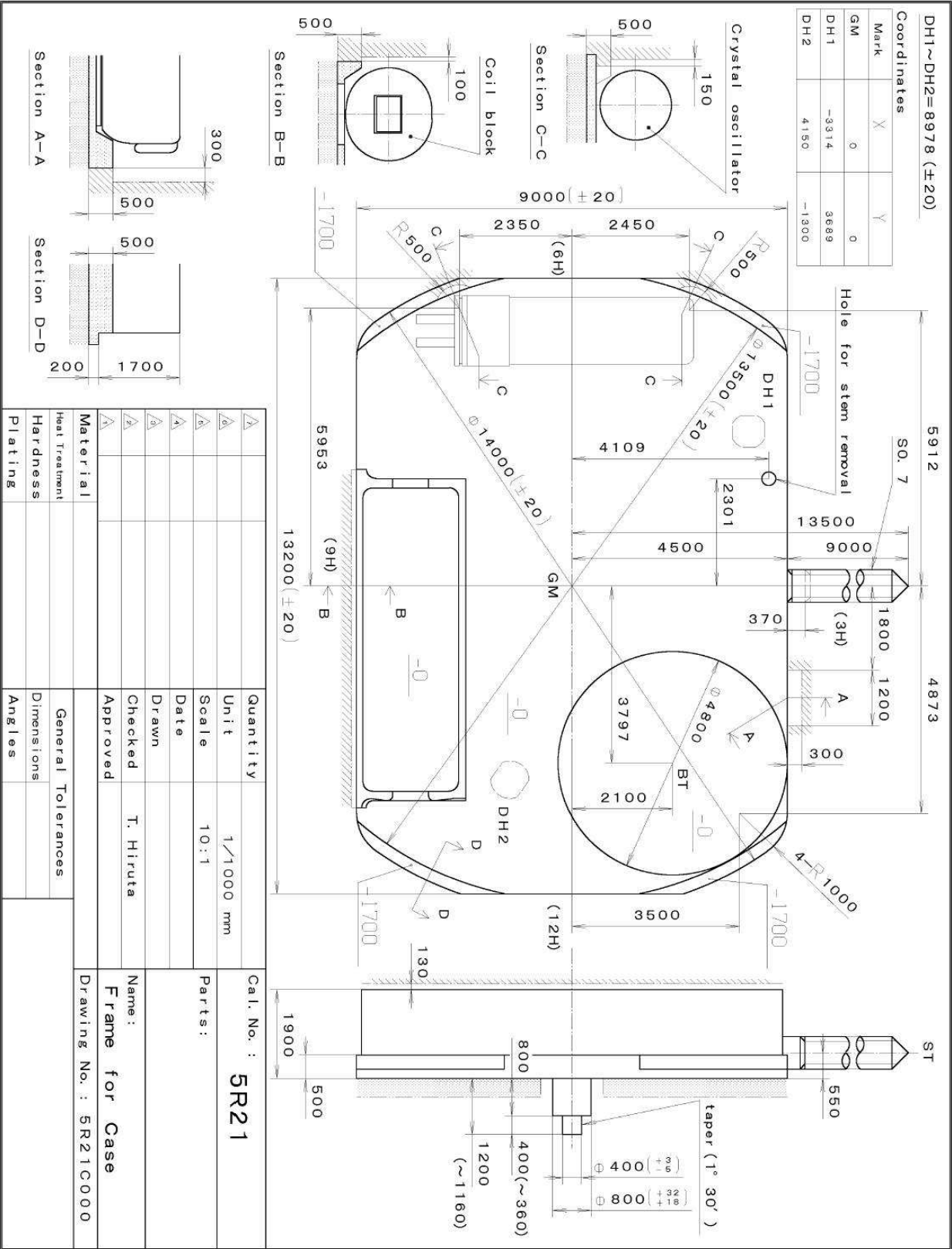
**\* 5R21/5R32 are only recommended to use for lady's size watch**

**\* Aluminium second hand should be used for Cal. 5R32**

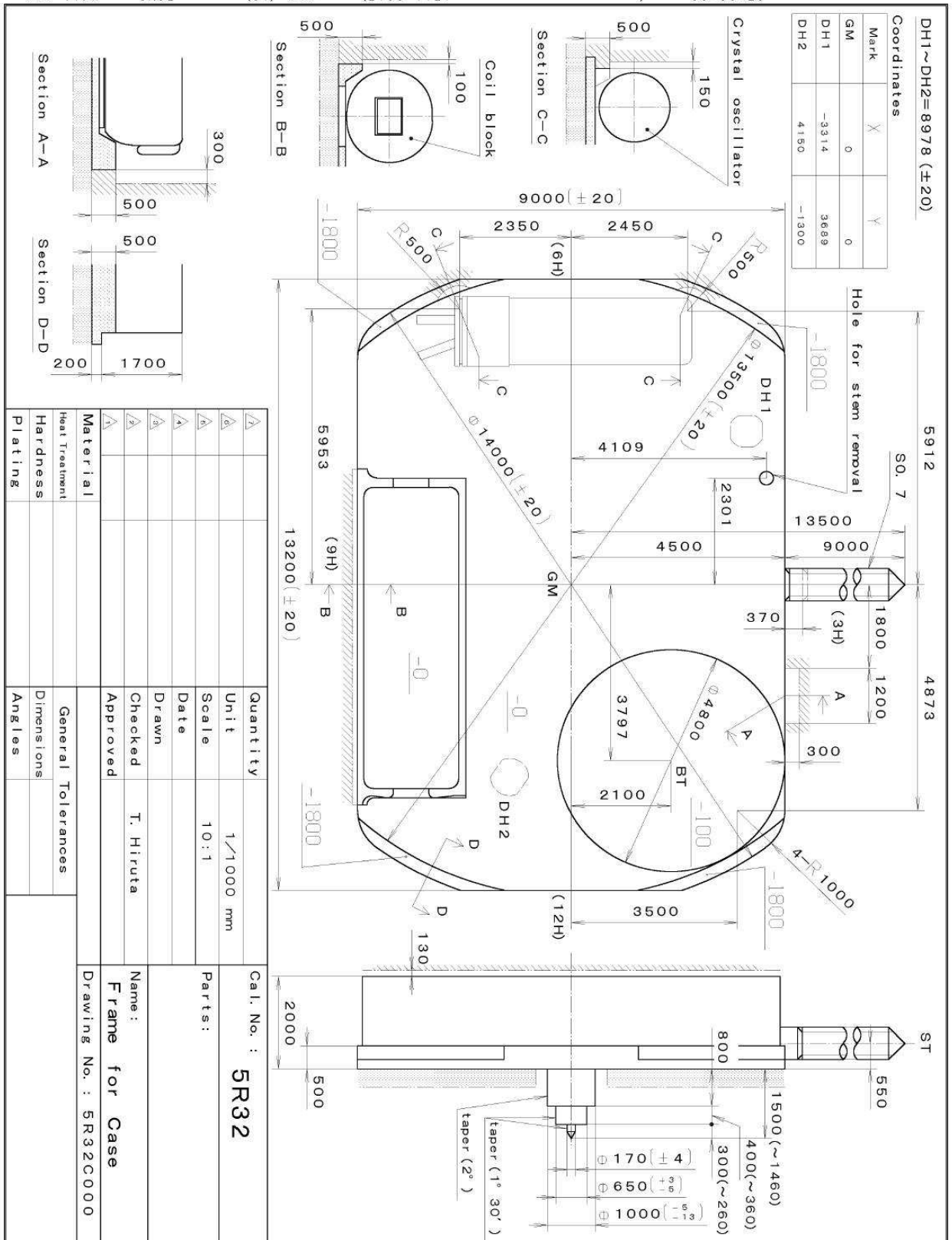
**These specifications might be changed without prior notice.**

This drawing is provisional and subject to our reconfirmation and/or revision without notice.

\*\*\* T I P W 5R21 (01) \*\*\* (2100 1121 ) 00-06-26









\*\*\* T I P W      5R32      (01)    \*\*\*      (2100 1121      )      00-06-26





xxx TIFW	065-413	(01) xxx	(2100 1121	)	00-06-22
----------	---------	----------	------------	---	----------



     			Quantity		Cal. No. :
			Unit	1/1000 mm	
			Scale	20:1	Parts:  065-413
			Date		
			Drawn		
			Checked	T. Hiruta	
		Approved		Name:	SETTING STEM
Material					Drawing No. : 4130S000
Heat Treatment			General Tolerances		
Hardness			Dimensions		
Plating			Angles		