



Cal. VX9PE

ϕ 29.5 mm
H 3.99 mm

Items	Rev.	Page
Specifications	01	1
Appearance	00	2
Casing	00	3
Hand fitting	01	4
Hand setting stem	00	5
Dial	00	6
Casing ring	00	7
Operation	00	8

Date: 25/Jun./'13

S.EPSON Products

MOVEMENT SPECIFICATIONS

Date : 25/Jun./'13

Rev. : 01

CAL. VX9PE

Analog Quartz 12 3/4" Movement / 3 hands (H/M/S) and 2 eyes
with Day / Date indicators

1. MOVEMENT DIMENSIONS

Outside diameter	$\phi 29.50\text{mm} \times 26.00\text{mm}(3\text{-}9\text{H}) \times 29.36\text{mm}(12\text{-}6\text{H})$
Casing diameter	$\phi 28.60\text{mm} \times 25.60\text{mm}(3\text{-}9\text{H}) \times 28.60\text{mm}(12\text{-}6\text{H})$
Total height	3.99mm (including battery)

2. TIME STANDARD

Type of quartz oscillator	Tuning fork
Frequency of quartz oscillator	32,768 Hz
Accuracy	± 20 seconds per month (on wrist)
Operating temperature range	-5°C to $+50^{\circ}\text{C}$
Regulation device	Nil (Pre-adjusted)

3. INDICATOR / FUNCTIONS

3 Hands	Hour / Minute / Second
2 Small hands	Day(12H) / Date(6H)
Reset switch	
Setting mechanism	Crown at normal position : Free
	Crown pulled out 1st click : Time setting / Reset
	2H button : Day change
	4H button : Date change

4. FEATURES

Jewels	0 Jewels
Anti-magnetism	Over 1600A/m (Direct current magnetic field)
Maximum unbalance of hands	Second hand : $0.1 \mu \text{N} \cdot \text{m}$
	Minute hand : $0.9 \mu \text{N} \cdot \text{m}$
	Hour hand : $0.9 \mu \text{N} \cdot \text{m}$
Moment of inertia	Day hand : less than $0.008 \mu \text{g} \cdot \text{m}^2$

5. BATTERY

Type / Size	Silver oxide battery / $\phi 9.5\text{mm} \times t 2.7\text{mm}$
Recommended battery	SR927SW (Maxell, Panasonic, Sony, Seizaiken)
Nominal voltage	1.55 V
Battery life	Approx. 3 years
Driving current consumption	Approx. $2.1 \mu \text{A}$
Operation stopping voltage	1.1 V

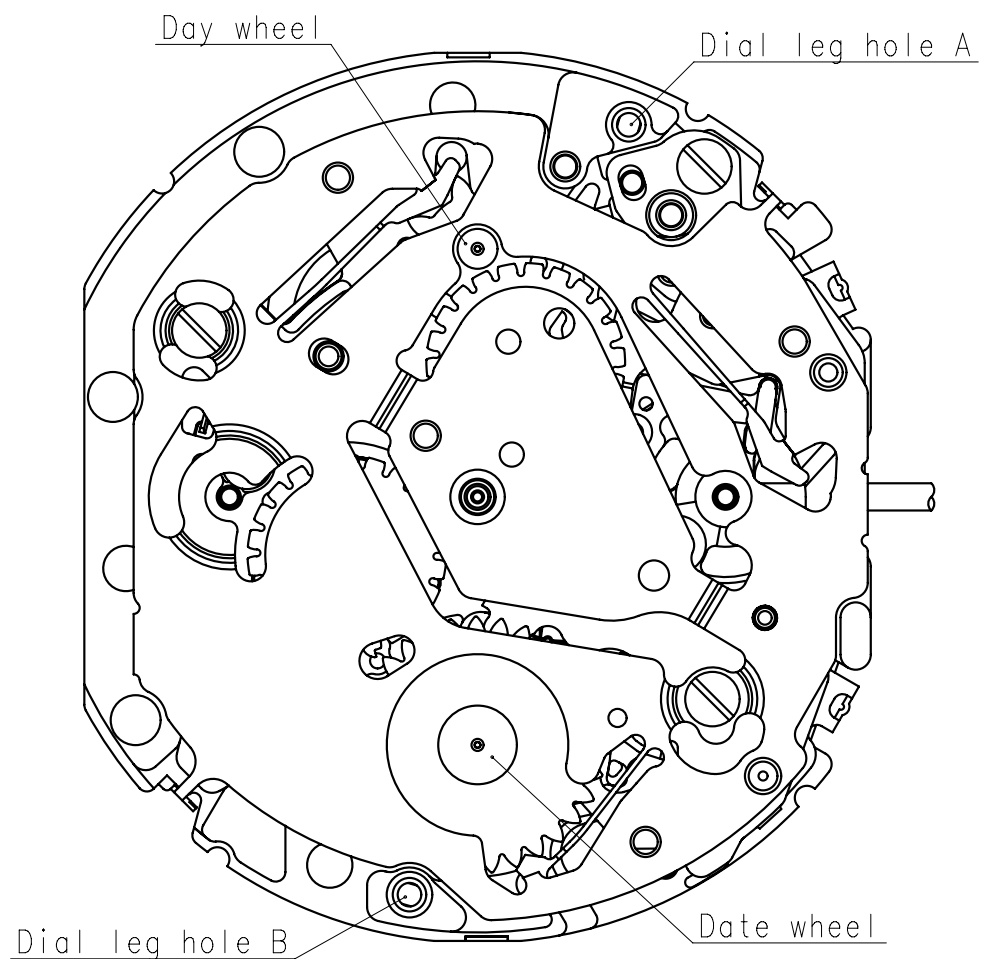
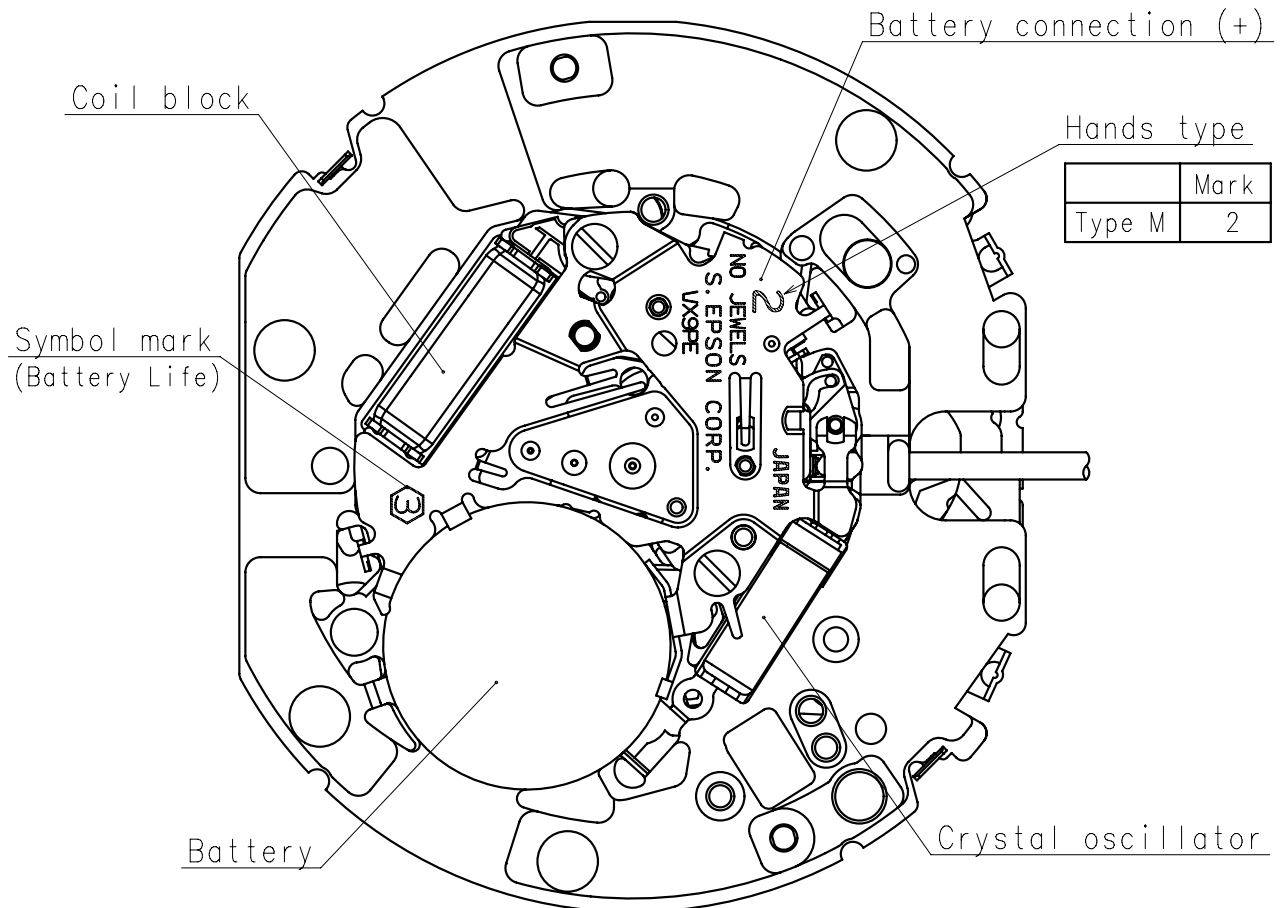
6. SEPARATED PARTS (Parts code)

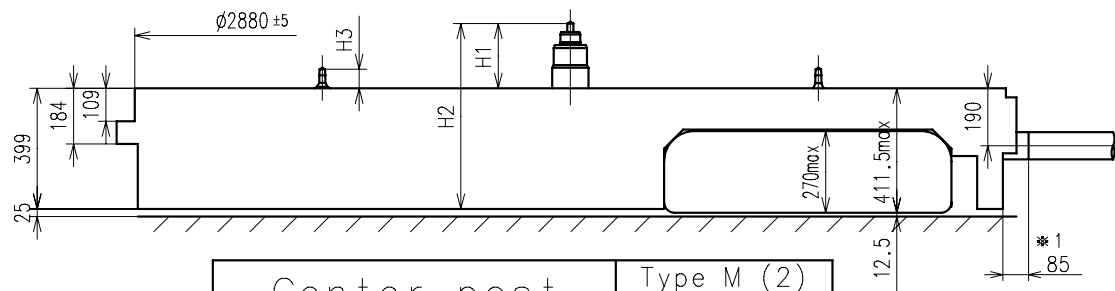
Hand setting stem	0351578
Battery	SR927SW

7. TEST OF ACCURACY

Equipment to be used	SEIKO quartz tester QT-99, Greiner quartz timer-C , Witschi Q-tester 4000
Duration of measurement	10 seconds
Microphone to be used	Electromagnetic detection type

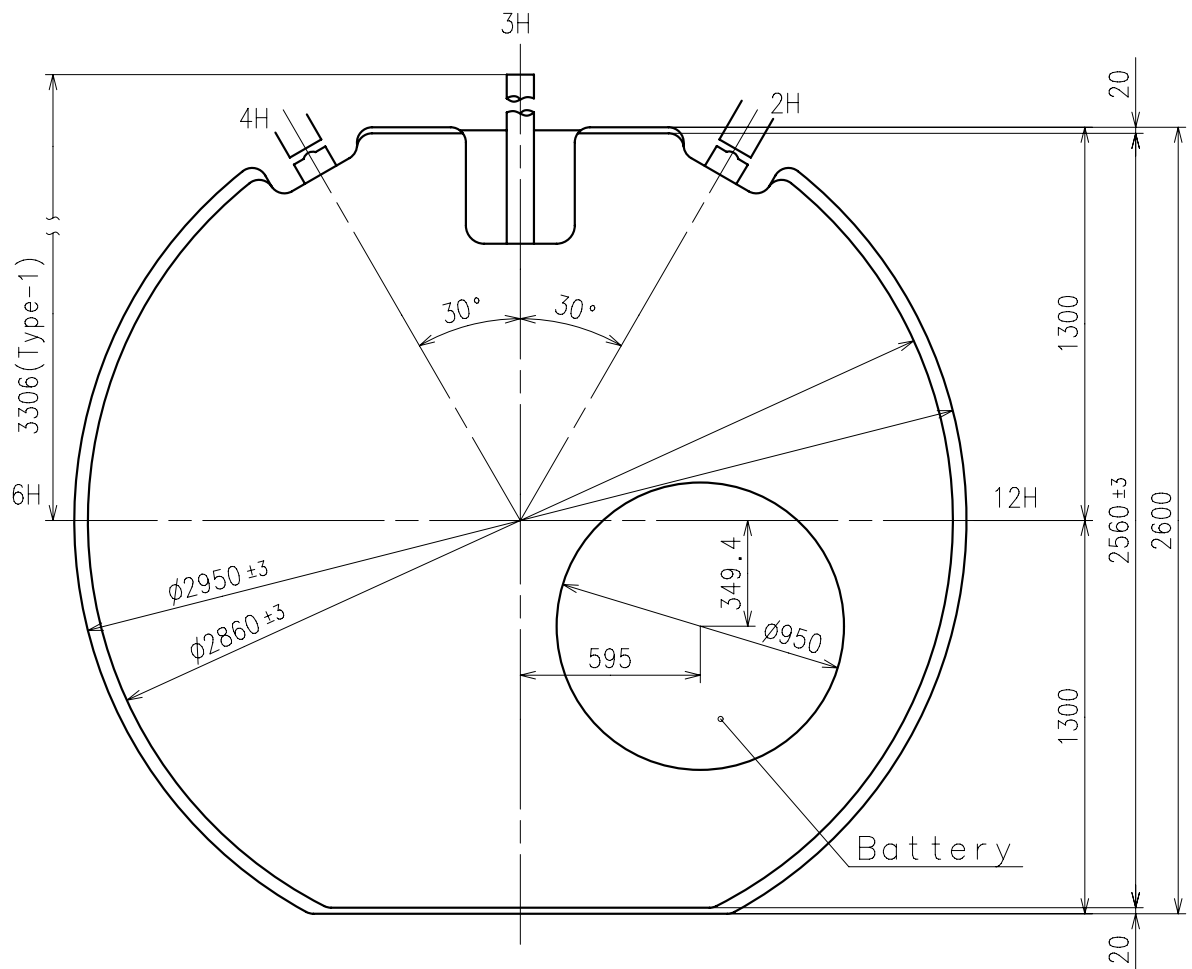
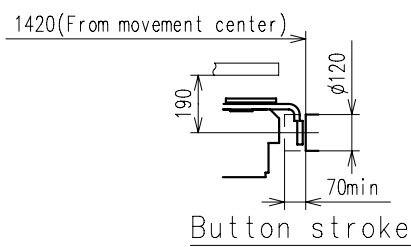
All specifications are subject to change without notice.





Center post		Type M (2) VX9PE**
Maximum height from dial support	H1	214
Total height including movement	H2	613
Total height from dial support	H3	63

*1:First pullout stroke

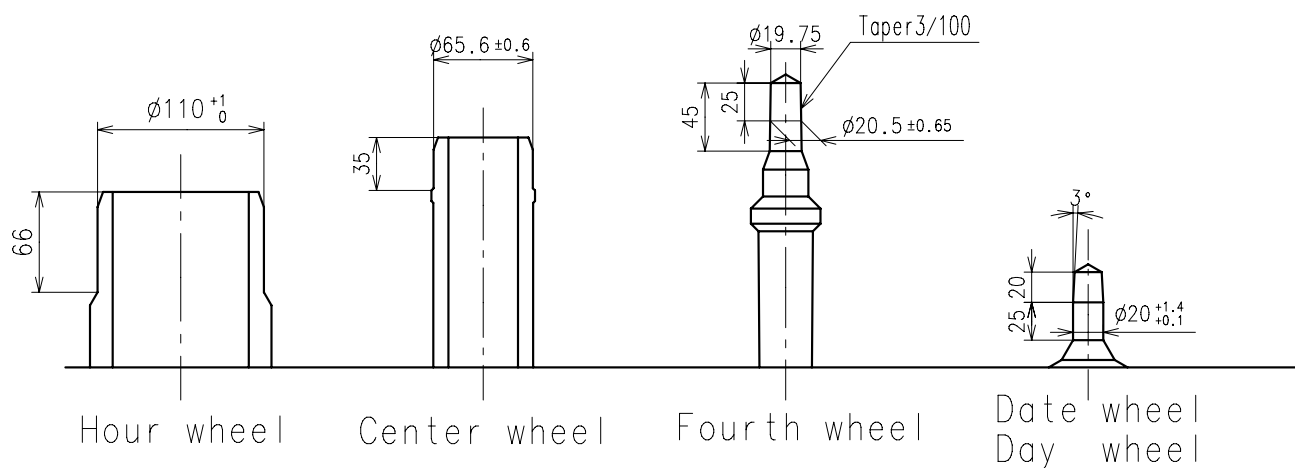


※ Unbalance

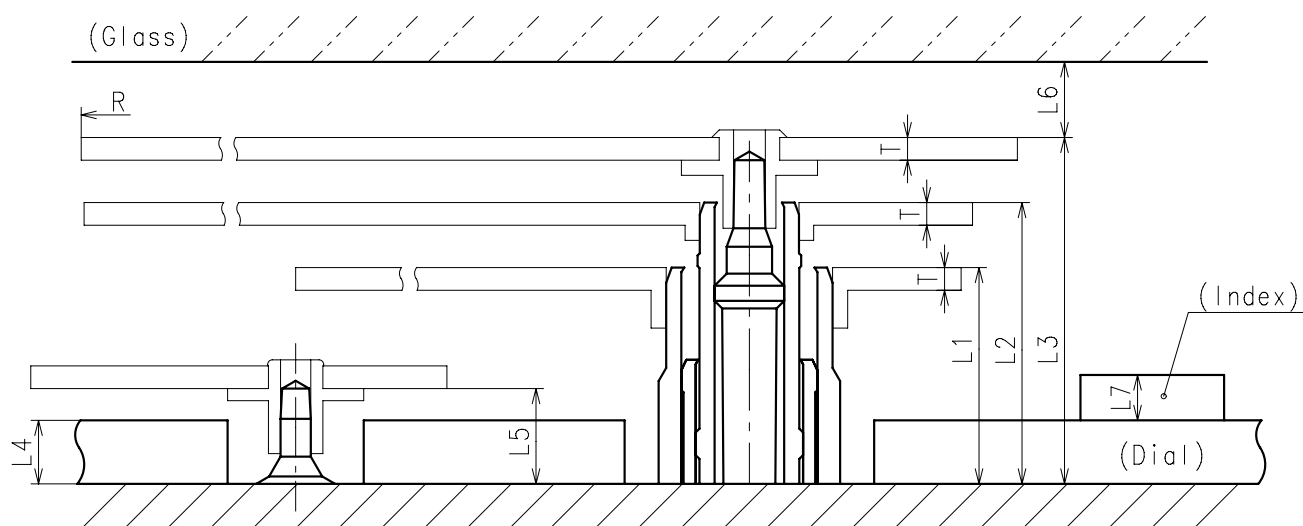
- Hour hand $\leq 0.9\mu \text{ N} \cdot \text{m}$ ($90\mu \text{ g} \cdot \text{m}$)
- Minute hand $\leq 0.9\mu \text{ N} \cdot \text{m}$ ($90\mu \text{ g} \cdot \text{m}$)
- Second hand $\leq 0.1\mu \text{ N} \cdot \text{m}$ ($10\mu \text{ g} \cdot \text{m}$)

※ Moment of inertia

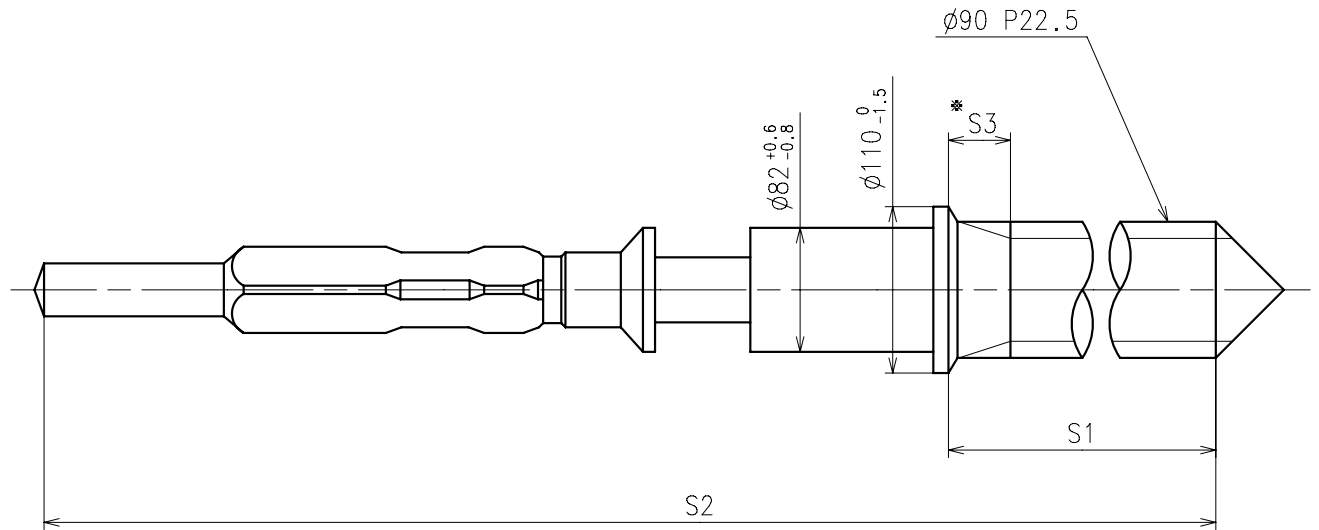
- Day hand $\leq 0.008\mu \text{ g} \cdot \text{m}^2$



	Parts No.				
	Hour wheel	Center wheel	Fourth wheel	Date wheel	Day wheel
Type M (2) VX9PE**	0271658	0221602	0241559	0970503	1002546



	L1	L2	L3	L4	L5	L6	L7	T	R
Type M (2) VX9PE**	143	186	229	40	63	MIN: 50	MAX: 50	15	MAX: 1250

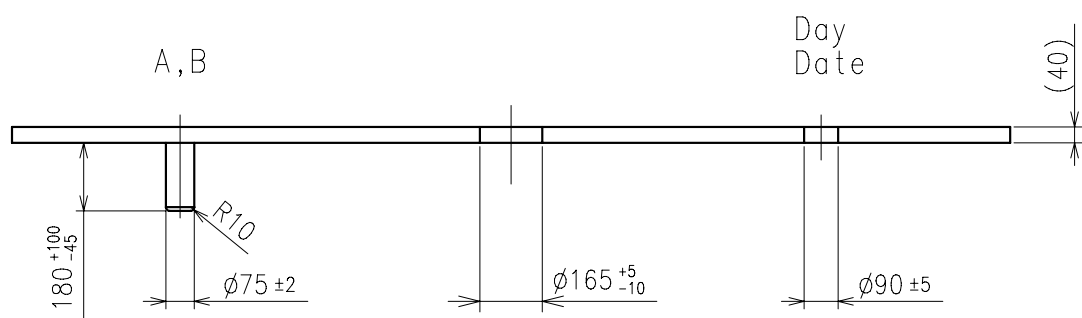
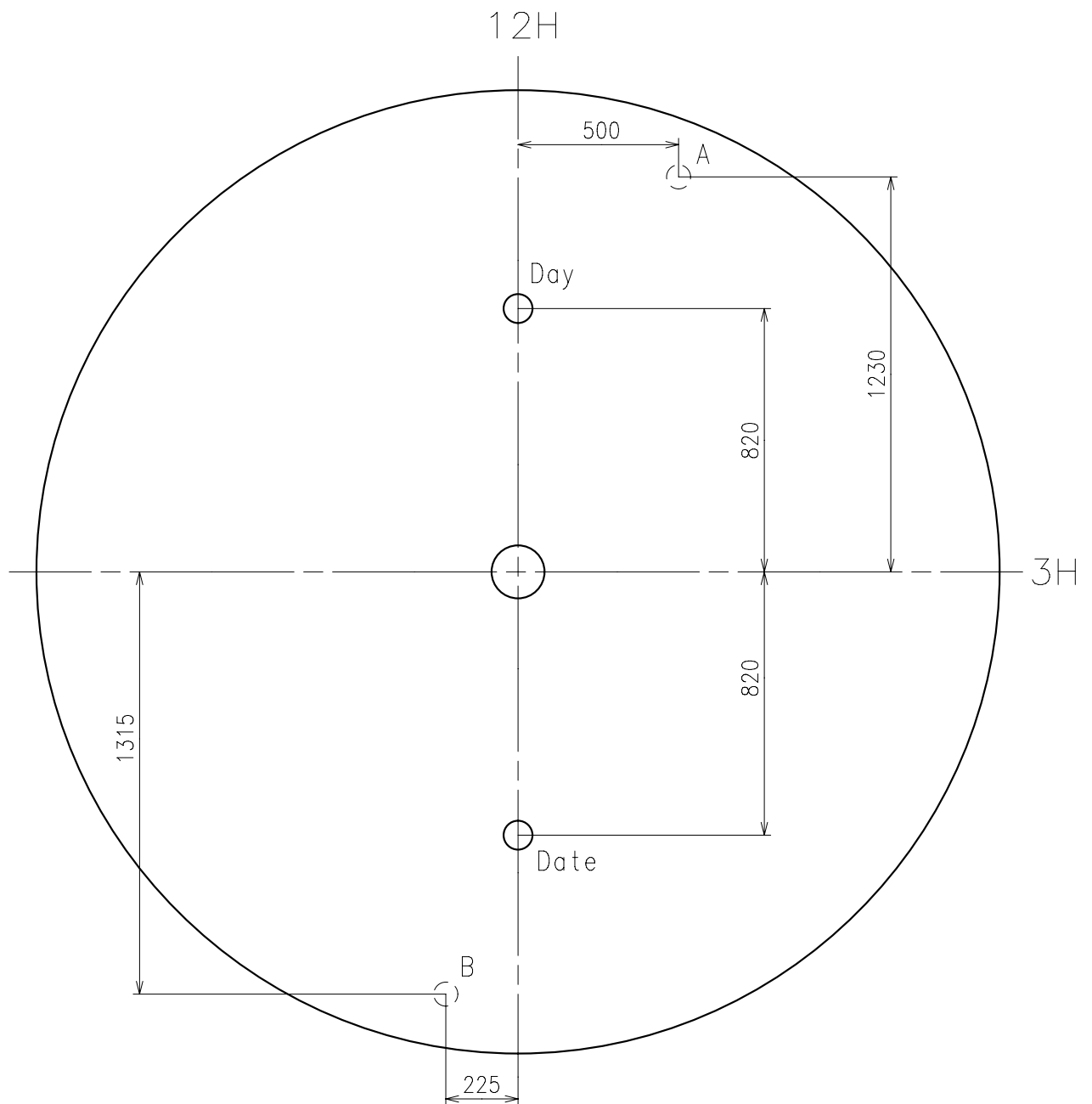


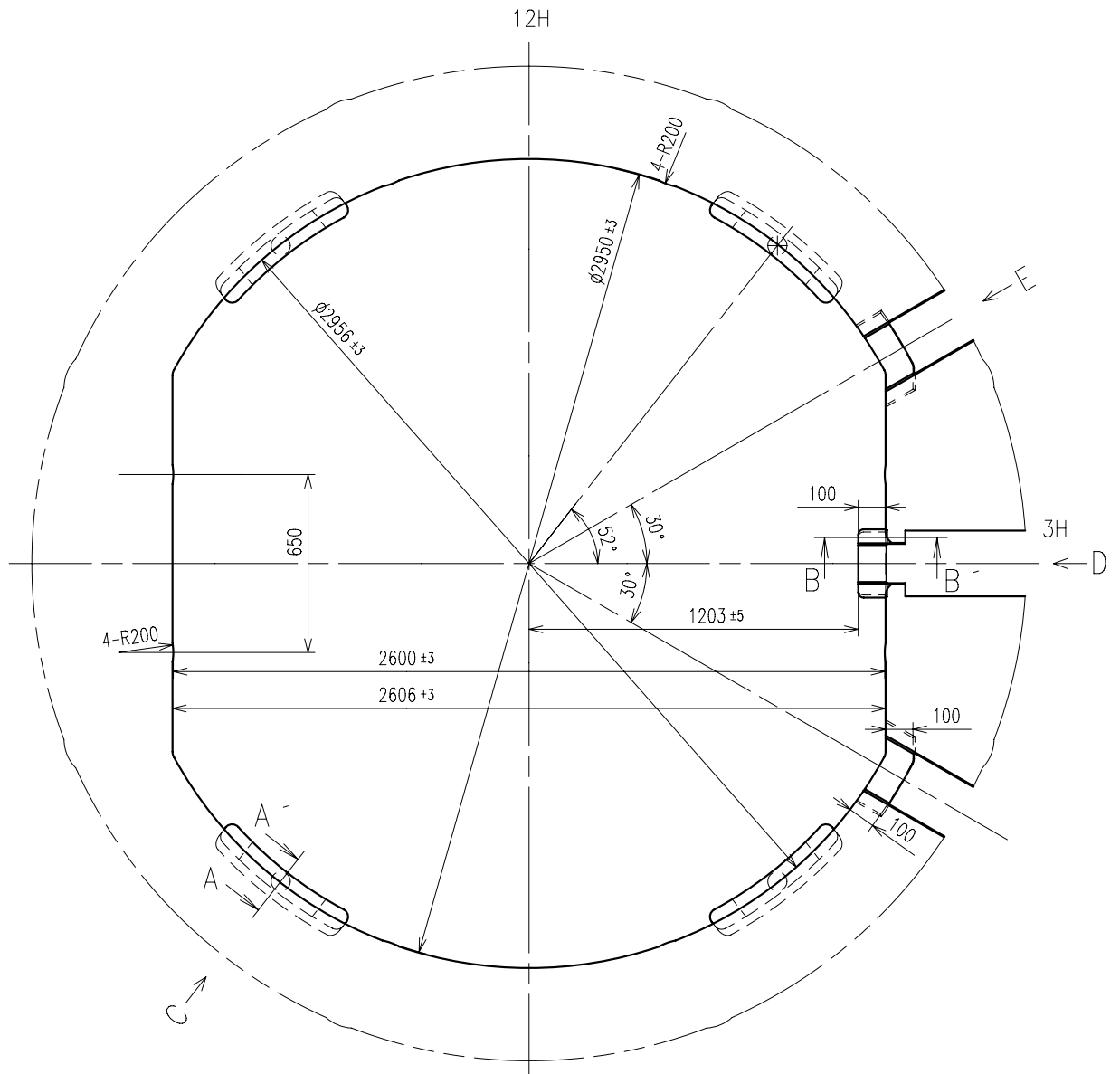
* Not threaded

	Part No.	S1	S2	* S3
Type-1	0351578	2507	3105	650

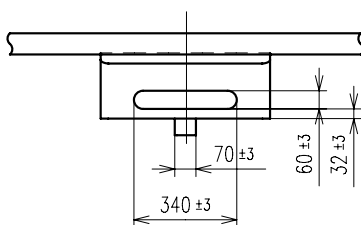
Material : Steel

Hardness : Vickers 600 ± 50

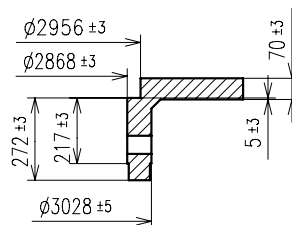




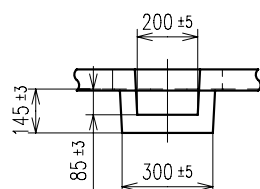
C view



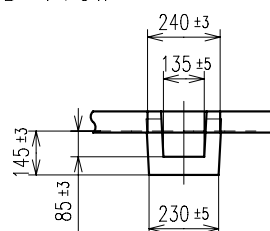
A-A' section



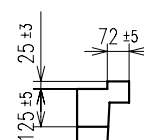
E view

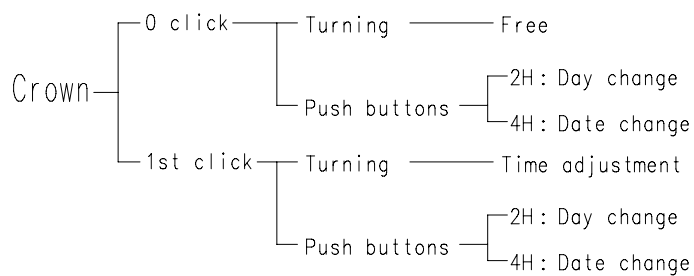
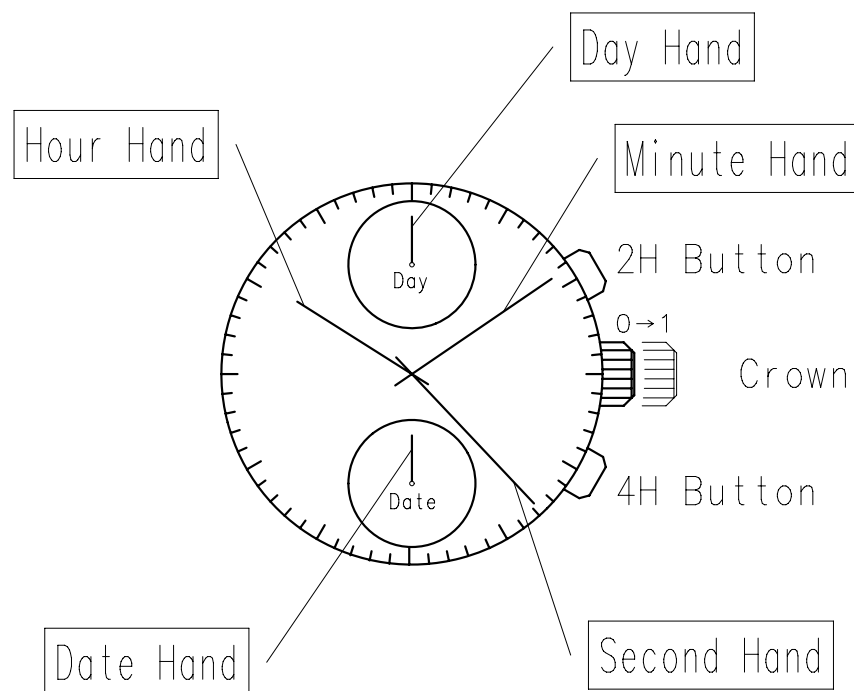


D view



B-B' section





* Do not set the day and date between 9:00 PM and 4:00 AM.
Otherwise, the day and date may not change properly.