



# Cal. VX50E

**15.3 × 17.8 mm**  
**H 2.16 mm**

Items	Rev.	Page
Specifications	02	1
Appearance	05	2
Casing	03	3
Hand fitting	04	4
Hand setting stem	03	5
Dial	01	6
Casing ring	01	7

Date: 13/Apr./'12

**S.EPSON Products**

**CAL. VX50E**

Analog Quartz 6 3/4 × 8" Slim Movement / Two Hands(H/M)

**1. MOVEMENT DIMENSIONS**

Outside diameter	15.30mm(3-9H) × 18.20mm(12-6H)
Casing diameter	15.30mm(3-9H) × 17.80mm(12-6H)
Total height	2.16mm (including battery)

**2. TIME STANDARD**

Type of quartz oscillator	Tuning fork
Frequency of quartz oscillator	32,768 Hz
Accuracy	±20 seconds per month (on wrist)
Operating temperature range	−5°C to +50°C
Regulation device	Nil (Pre-adjusted)

**3. INDICATOR / FUNCTIONS**

2 Hands	Hour / Minute
Setting mechanism	Crown at normal position : Free Crown pulled out 1st click : Time setting

**4. FEATURES**

Jewels	0 Jewel
Anti-magnetism	Over 1600A/m (Direct current magnetic field)
Maximum unbalance of hands	Minute hand : 0.35 $\mu$ N•mm Hour hand : 0.4 $\mu$ N•mm

**5. BATTERY**

Type / Size	Silver oxide battery / $\phi$ 6.8mm × t 1.6mm
Recommended battery	SR616SW (Maxell, Panasonic, Sony, Seizaiken)
Nominal voltage	1.55 V
Battery life	Approx. 5 years
Driving current consumption	Approx. 0.33 $\mu$ A
Operation stopping voltage	1.0 V

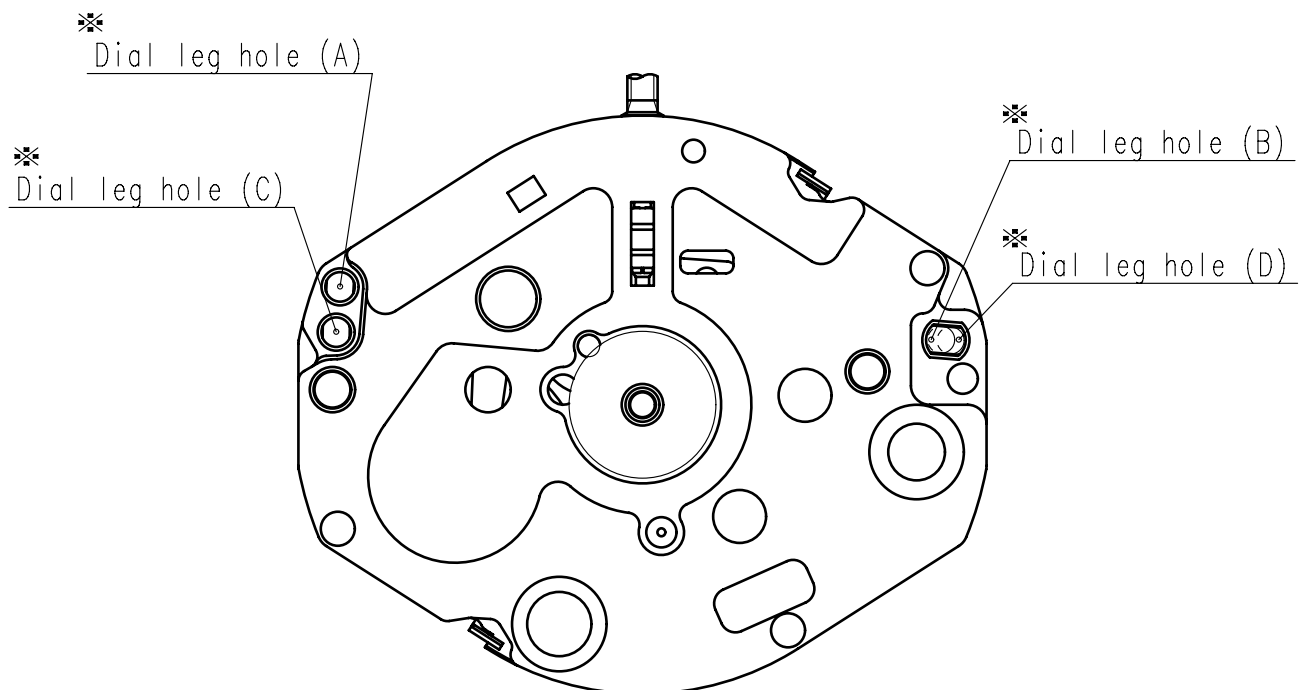
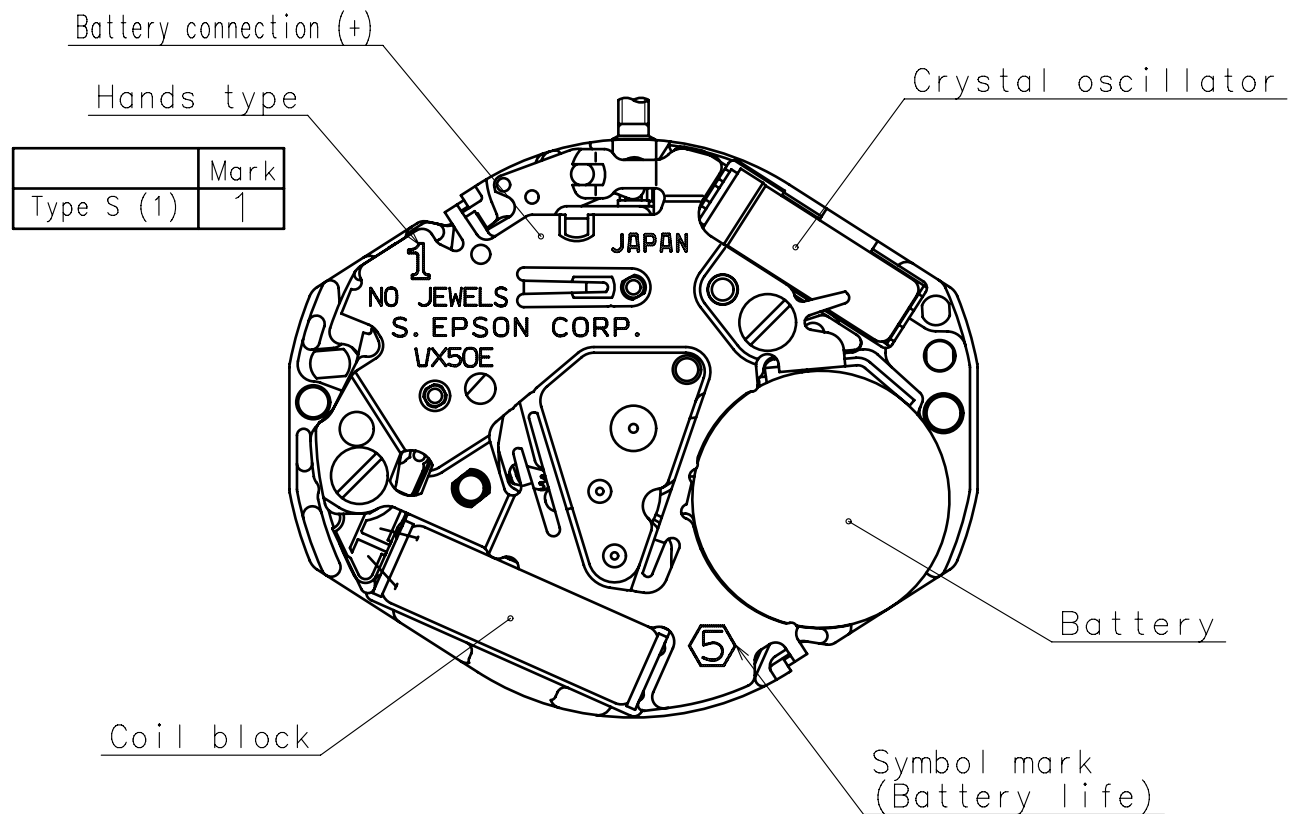
**6. SEPARATED PARTS (Parts code)**

Hour wheel	0271905
Dial washer	0491735
Hand setting stem	0351178 or 0351881
Battery	SR616SW

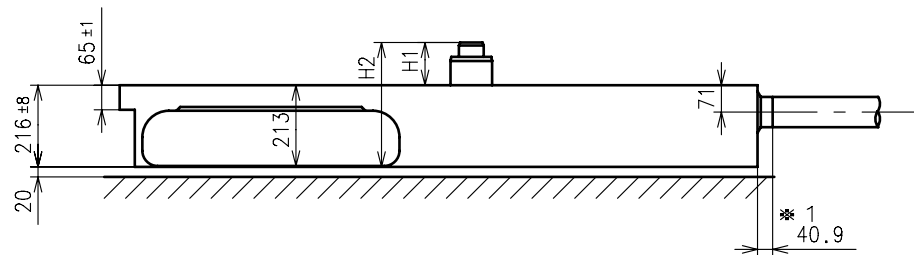
**7. TEST OF ACCURACY**

Equipment to be used	SEIKO quartz tester QT-99, Greiner quartz timer-C , Witschi Q-tester 4000
Duration of measurement	10 seconds
Microphone to be used	Electromagnetic detection type

All specifications are subject to change without notice.

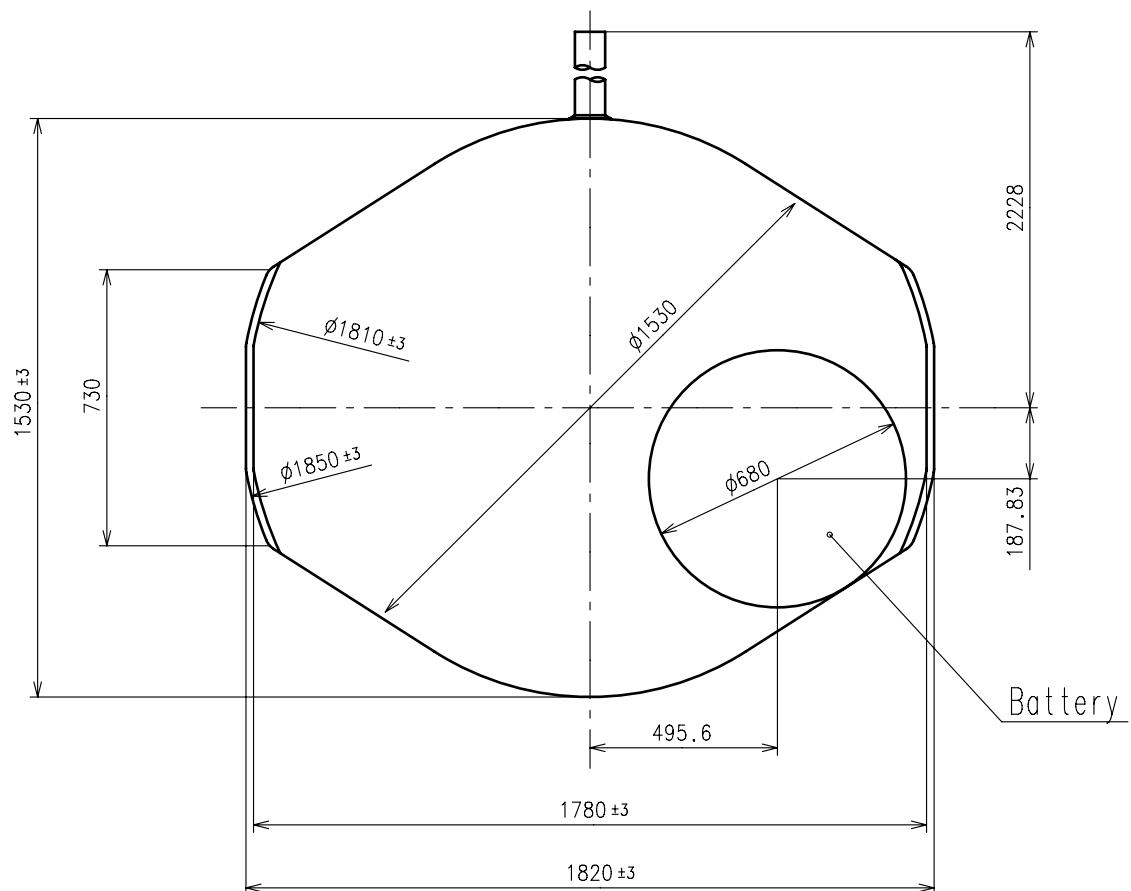


※ :Combination of dial leg hole A-B,C-D

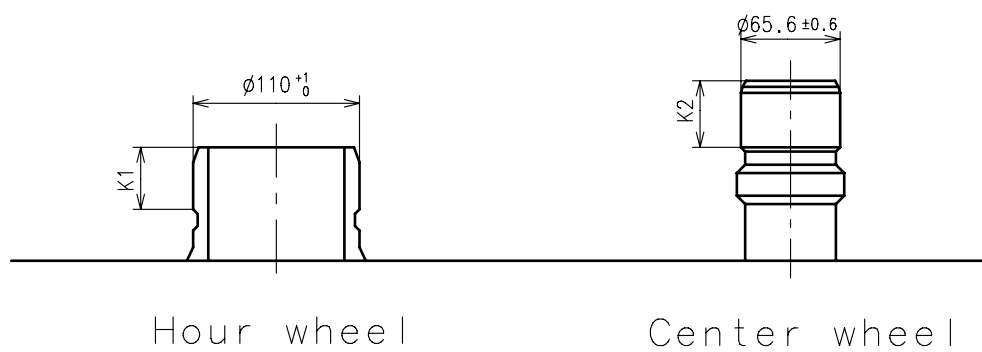


$\ast 1$ : Pull out stroke

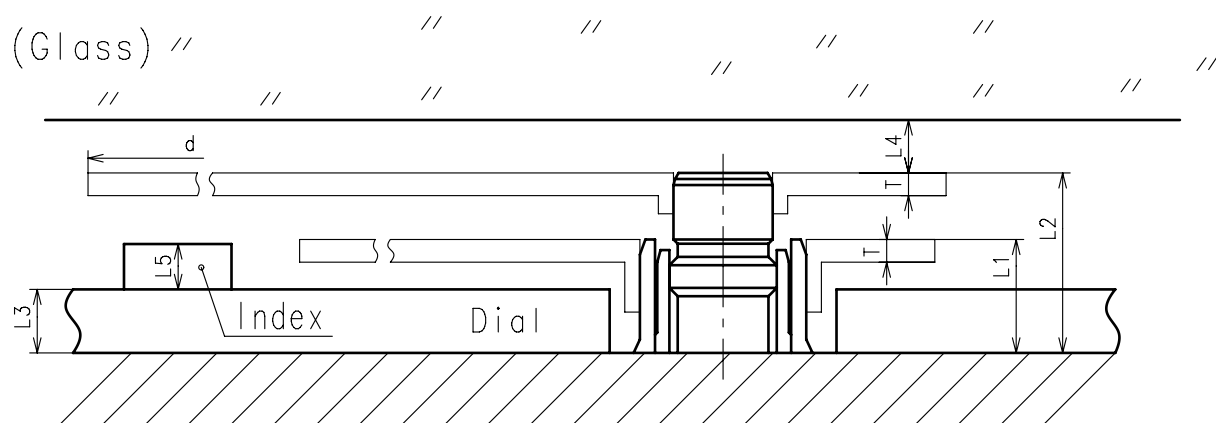
Center post		Type S (1) VX50E1S
Maximum height from dial support	H1	113
Total height incl. movement	H2	329



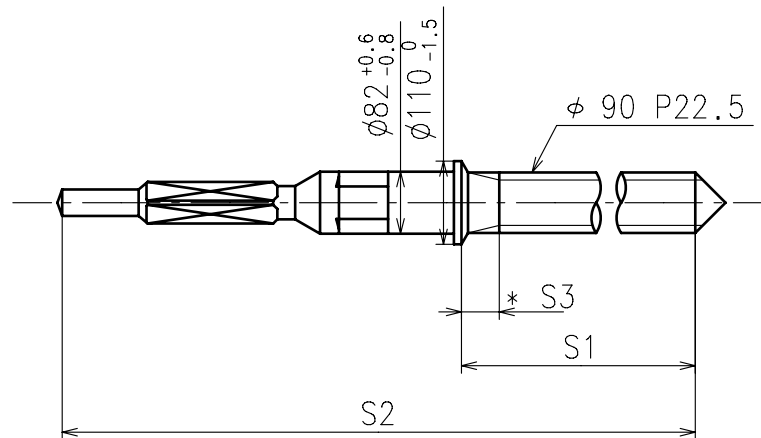
- ※ Hour hand unbalance  $\leq 0.40\mu \text{ N} \cdot \text{m} (40\mu \text{ g} \cdot \text{m})$   
 ※ Minute hand unbalance  $\leq 0.34\mu \text{ N} \cdot \text{m} (35\mu \text{ g} \cdot \text{m})$



	Parts No.		Dimension	
	Hour wheel	Center wheel	K1	K2
Type S (1) VX50E1S	0271905	0221905	41	47



	L1	L2	L3	L4	L5	T	d
Type S (1) VX50E1S	75	113	40	35	30	15	$\phi 2500$

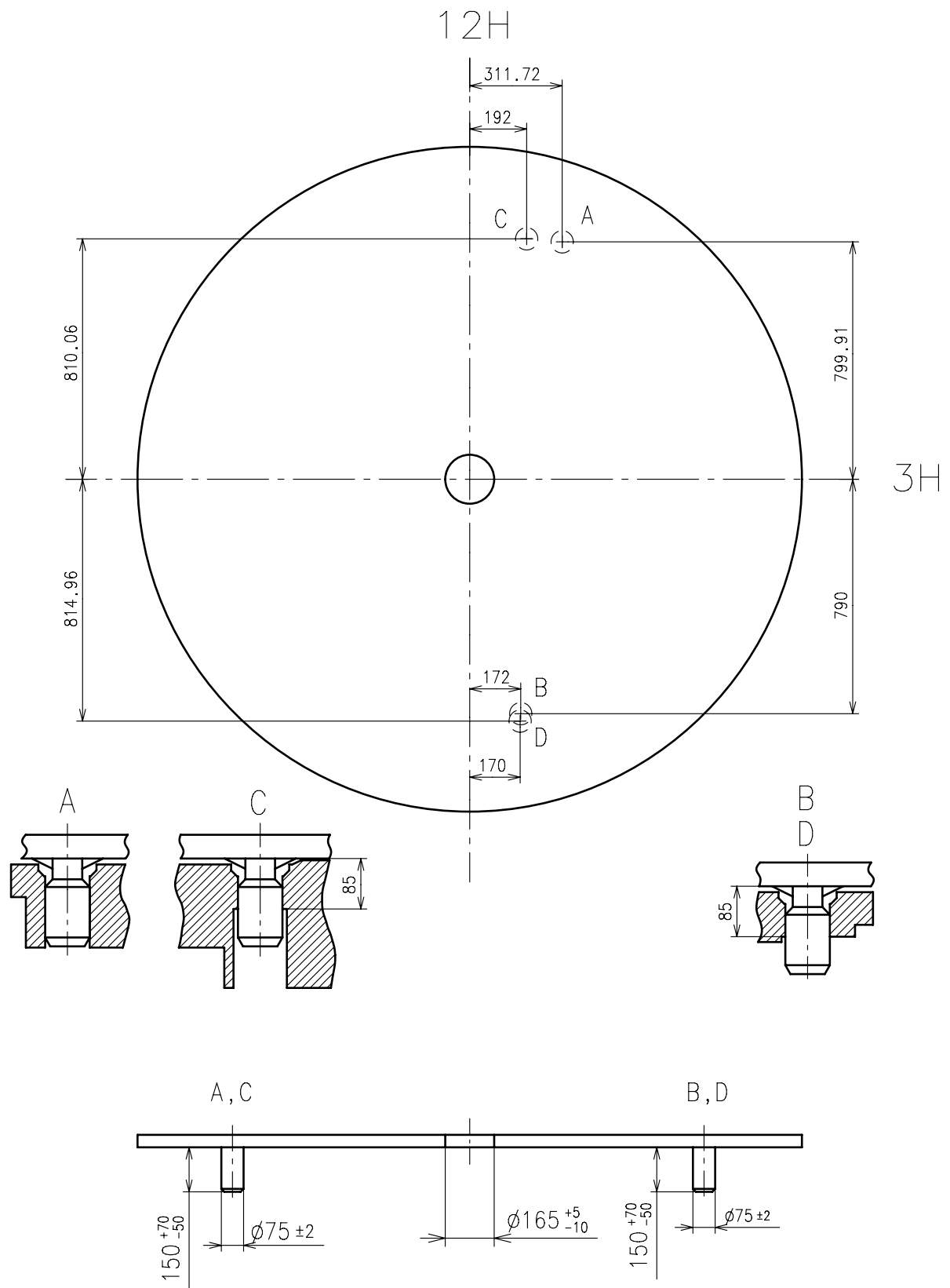


\* Not threaded

	Part No.	S1	S2	S3
Type-1 (Standard)	0351178	1463	1991	50
Type-2	0351881	2263	2791	840

Material : Steel

Hardness : Vickers 600±50



※ Use dial leg hole as like below A-B or C-D

