

CAL. VX45, VX46

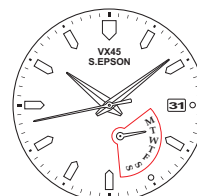
RETROGRADE DAY INDICATOR

1/2

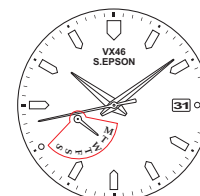
Instructions

Features

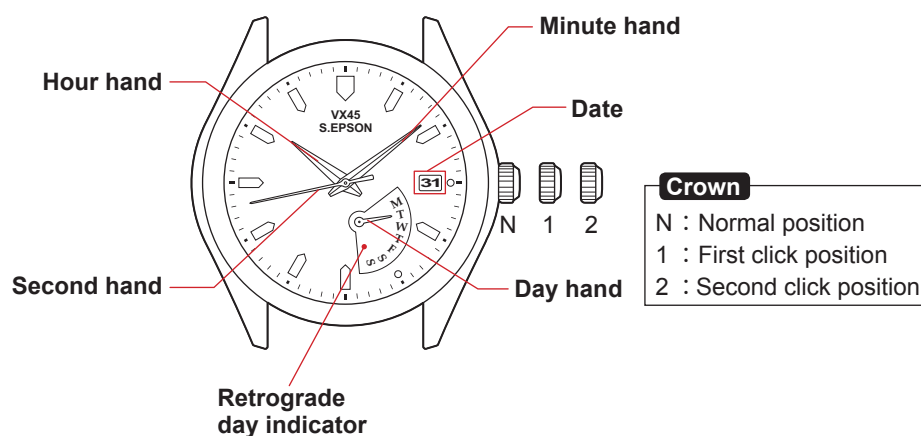
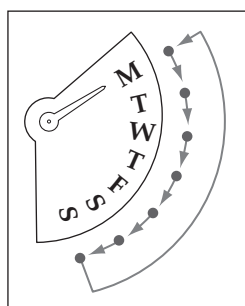
- ◆ Hour, Minute and Second Hands
- ◆ Date
- ◆ Retrograde Day Indicator
 - After the day hand reaches the last day of the week, the hand will jump to the first day of the week.



VX45



VX46



Movement Size	11 1/2"
Outside Diameter	26.40 mm: 23.50 mm (12H-6H) x 23.50 mm (3H-9H)
Casing Diameter	25.60 mm: 23.50 mm (12H-6H) x 21.90 mm (3H-9H)
Height	3.49 mm (Include battery)
Battery	SR920SW
Battery Life Approx.	3 years

- ◆ Timing of day changes
 - The date moves to the next between 11:00 p.m. and 12:00 p.m.
 - The day hand moves to the next between 1:00 a.m. and 4:00 a.m.

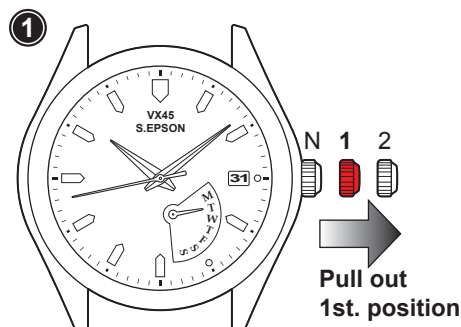


S.EPSON Products

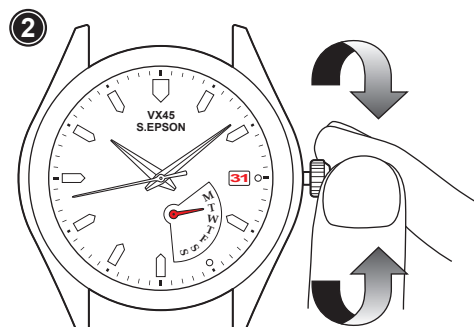
JAPAN TECHNOLOGY & QUALITY

www.timemodule.com

How to Set Time, Date and Day of the Week:



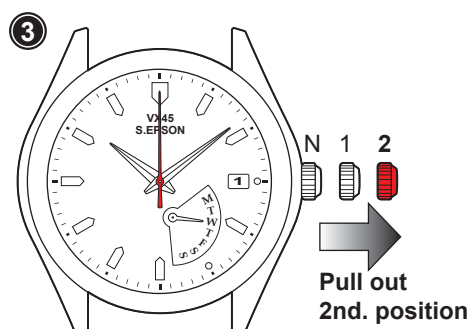
- Pull crown out to the 1st click position.



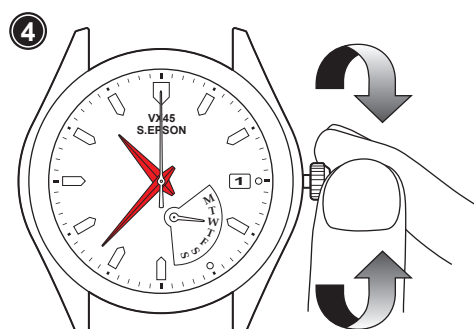
- Turn the crown counterclockwise to set Date.
- Turn the crown clockwise to set Day hand.
- Turn until the desired date and day appears.

Note: Do not set the day and date between 9:00 p.m. and 4:00 a.m. Otherwise, it may not turn properly.

After the day hand reaches the last day of the week, turn the crown clockwise and the hand will return to the first day of the week

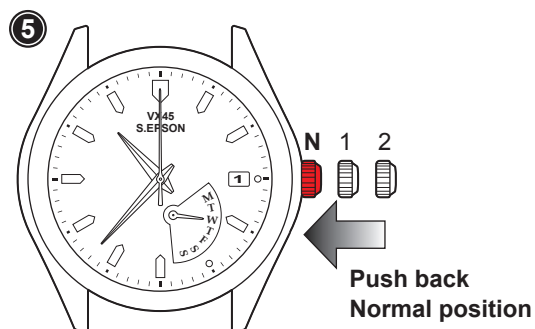


- Pull crown out to the 2nd click position when the second hand is at the 12 o'clock position.



- Turn to set the time.
- Turn counter-clockwise to advance the hour and minute hands past 12:00 AM. Doing so will advance the date to the current date.
- Set the hour and minute hands to the desired time taking AM or PM into consideration.

Note: When setting the minute hand, advance it 4 to 5 minutes ahead of the desired time and then turn it back to the exact time.



- Push crown back to normal position.



S.EPSON Products

JAPAN TECHNOLOGY & QUALITY

www.timemodule.com