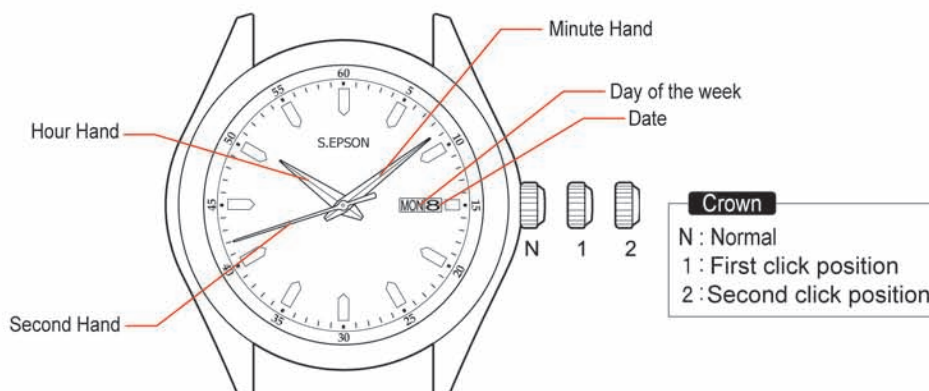


2 Hands, 3 Hands with calendar movement

1/3 Instructions

Features

- ◆ Hour, Minute and Second Hands
- ◆ Date
- ◆ Day of the week



						Diameter				
Cal.	2 hands	3 hands	Date	Day & Date	Size	Outside	Casing	Height	Battery	Battery life Approx.
VX89	○		○		6x8"	15.70mm (3H-9H) x 17.80mm (12H-6H)	15.30mm (3H-9H) x 17.40mm (12H-6H)	2.75mm	SR621SW	3 years
VX82		○	○					2.75mm		
VX83		○		○				3.11mm		
VX19	○		○		8 3/4"	Ø20.00mm x 18.00mm (3H-9H)	Ø19.40mm x 18.00mm (3H-9H)	2.60mm	SR716SW	
VX12		○	○					2.60mm		
VX3KE	○		○		10 1/2"	Ø24.00mm x 21.30mm (3H-9H) x 21.50mm (12H-6H)	Ø23.30mm x 21.30mm (3H-9H) x 21.50mm (12H-6H)	2.62mm	SR920SW	
VX32E		○	○					2.62mm		
VX33E		○		○				2.98mm		
VX3KG	○		○					2.62mm	SR920SW	
VX32G		○	○					2.62mm		
VX33G		○		○				2.98mm		5 years
VX42		○	○		11 1/2"	Ø26.40mm x 23.50mm (3H-9H) x 23.50mm (12H-6H)	Ø25.60mm x 21.90mm (3H-9H) x 23.50mm (12H-6H)	2.62mm	SR920SW	3 years
VX43		○		○				2.98mm		
VX44		○		○				2.98mm		
AL82		○	○		6x8"	16.30mm (3H-9H) x 18.20mm (12H-6H)	15.30mm (3H-9H) x 17.80mm (12H-6H)	4.15mm	SR626SW	2 years
AL83		○		○						
AL32		○	○		10 1/2"	Ø23.70mm x 22.00mm (3H-9H) x 22.60mm (12H-6H)	Ø23.30mm			
AL33		○		○						

◆ Timing of day changes

- The date moves to the next between 11:00p.m. and 12:00a.m.
- The day of the week moves to the next between 2:00a.m. and 4:00a.m.



S.EPSON Products

JAPAN TECHNOLOGY & QUALITY

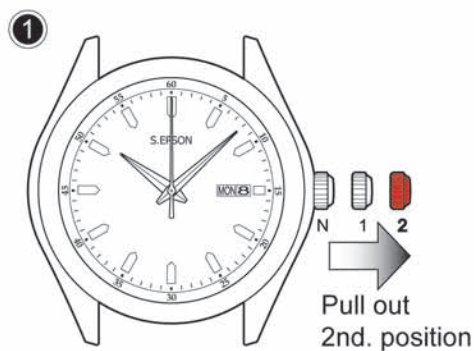
www.timemodule.com

2 Hands, 3 Hands with calendar movement

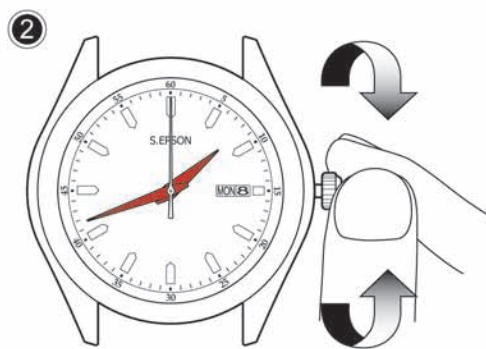
2/3

Instructions

How to Set Time:

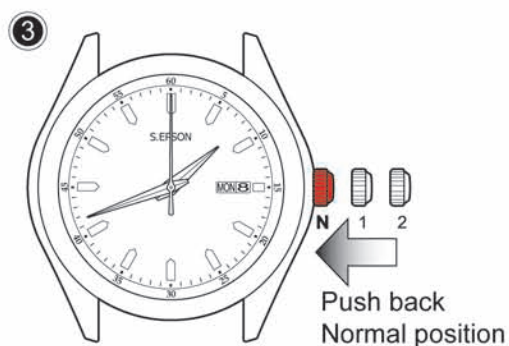


- If your watch is three hands type, pull crown out to the 2nd click position when the second hand is at the 12 o'clock position.



- Turn the crown to set the time.

Note: When setting the minute hand, advance it 4 to 5 minutes ahead of the desired time and then turn it back to the exact time.



- Push crown back to normal position. See the second hand begins to run.



S.EPSON Products

JAPAN TECHNOLOGY & QUALITY

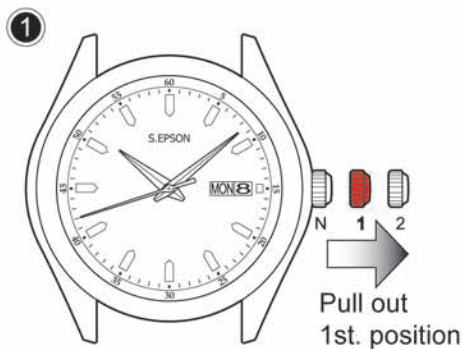
www.timemodule.com

2 Hands, 3 Hands with calendar movement

3/3

Instructions

How to Set Date and Day of the Week:

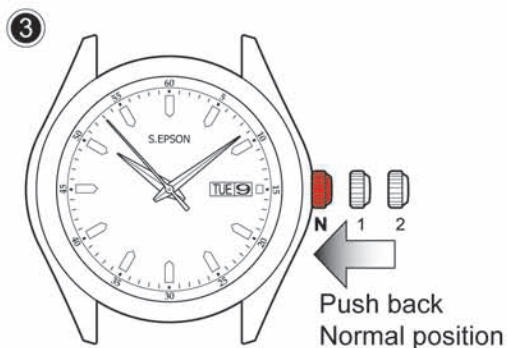


- Pull crown out to the 1st click position.



- Turn the crown to set date (day of the week).

*Note: Day of the week can be displayed either character by your choice.
Between 9:00PM and 4:00AM, the date (day of the week) may not change on the following date (day of the week). This time period is not good for setting.*



- Push crown back to normal position.

*Note: When date (day of the week) changes during daytime,
it happens when AM/PM is wrongly set.
Advance the hour hand by twelve hours.*

