



Cal. VX3RE

ϕ 23.3 mm
H 3.05 mm

Items	Rev.	Page
Specifications	02	1
Appearance	02	2
Casing	03	3
Hand fitting-01	02	4-01
Hand fitting-02	00	4-02
Hand setting stem	01	5
Dial	00	6
Casing ring	00	7

Date: 30/Nov./'11

S.EPSON Products

MOVEMENT SPECIFICATIONS

Date : 31/Jan./08

Rev. : 02

CAL. VX3R

Analog Quartz 10 1/2" Slim Movement / 3 hands (H/M/S) and 2 eyes
with Date / 24Hour indicators

1. MOVEMENT DIMENSIONS

Outside diameter	$\phi 24.00\text{mm} \times 21.50\text{mm}(3\text{-}9\text{H}) \times 21.50\text{mm}(12\text{-}6\text{H})$
Casing diameter	$\phi 23.30\text{mm} \times 21.30\text{mm}(3\text{-}9\text{H}) \times 21.50\text{mm}(12\text{-}6\text{H})$
Total height	3.05mm (including battery)

2. TIME STANDARD

Type of quartz oscillator	Tuning fork
Frequency of quartz oscillator	32,768 Hz
Accuracy	± 20 seconds per month (on wrist)
Operating temperature range	-5°C to $+50^{\circ}\text{C}$
Regulation device	Nil (Pre-adjusted)

3. INDICATOR / FUNCTIONS

3 Hands	Hour / Minute / Second
2 Small hands	Date / 24Hour
Reset switch	
Setting mechanism	Crown at normal position : Free Crown pulled out 1st click : Instant date change Crown pulled out 2nd click : Time setting / Reset

4. FEATURES

Jewels	0 Jewel
Anti-magnetism	Over 1600A/m (Direct current magnetic field)
Maximum unbalance of hands	Second hand : $0.07 \mu \text{N}\cdot\text{m}$ Minute hand : $0.6 \mu \text{N}\cdot\text{m}$ Hour hand : $0.5 \mu \text{N}\cdot\text{m}$

5. BATTERY

Type / Size	Silver oxide battery / $\phi 9.5\text{mm} \times t 2.0\text{mm}$
Recommended battery	SR920SW (Maxell, Panasonic, Sony, Seizaiken)
Nominal voltage	1.55 V
Battery life	Approx. 3 years
Driving current consumption	Approx. $1.50 \mu \text{A}$
Operation stopping voltage	1.1 V

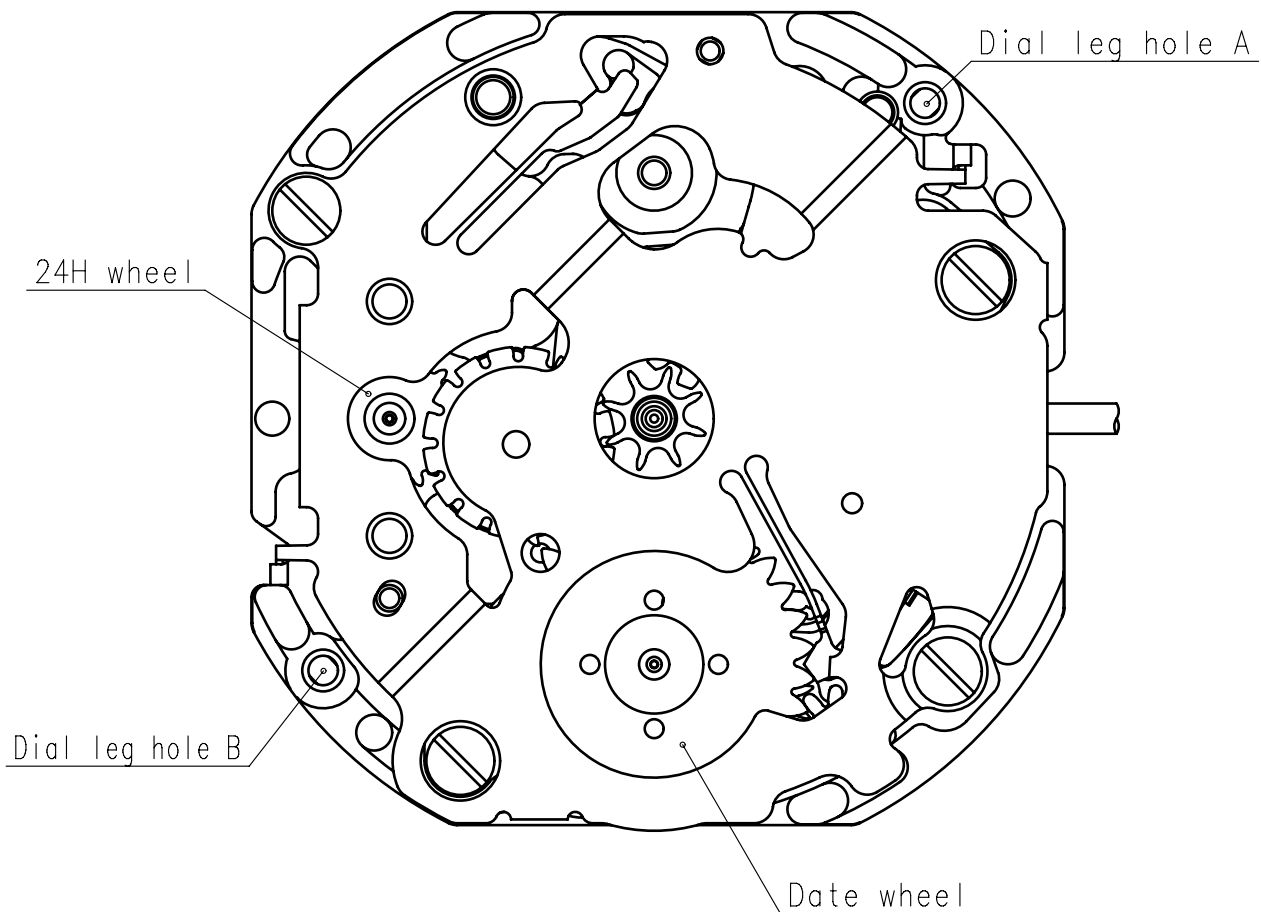
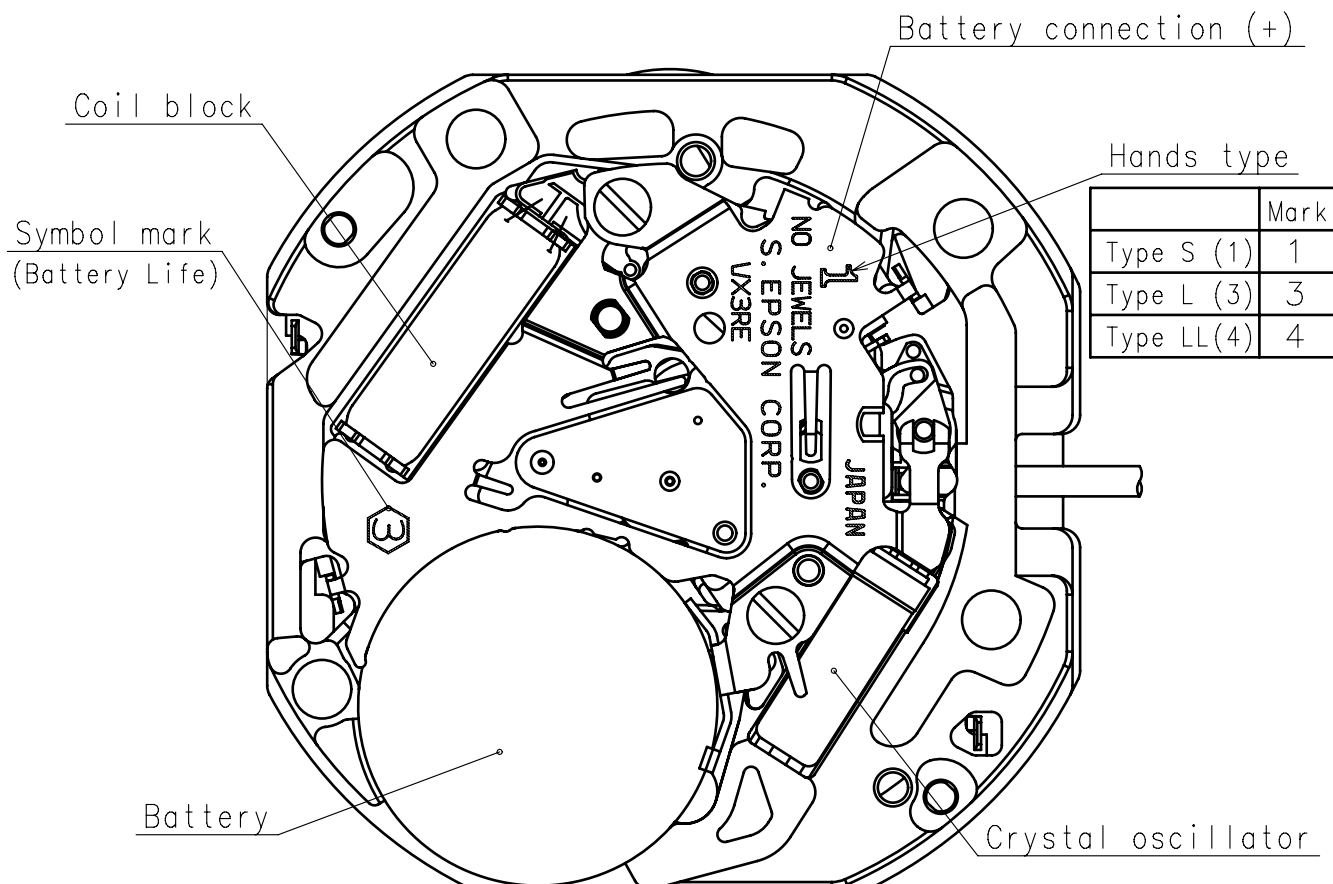
6. SEPARATED PARTS (Parts code)

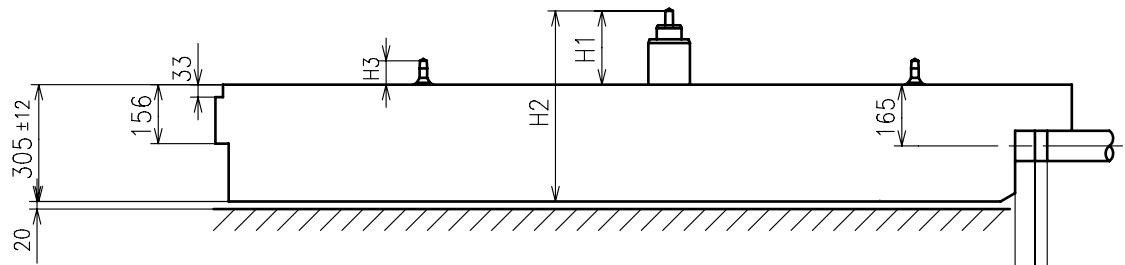
Hand setting stem	0351177 or 0351577
Battery	SR920SW

7. TEST OF ACCURACY

Equipment to be used	SEIKO quartz tester QT-99, Greiner quartz timer-C , Witschi Q-tester 4000
Duration of measurement	10 seconds
Microphone to be used	Electromagnetic detection type

All specifications are subject to change without notice.



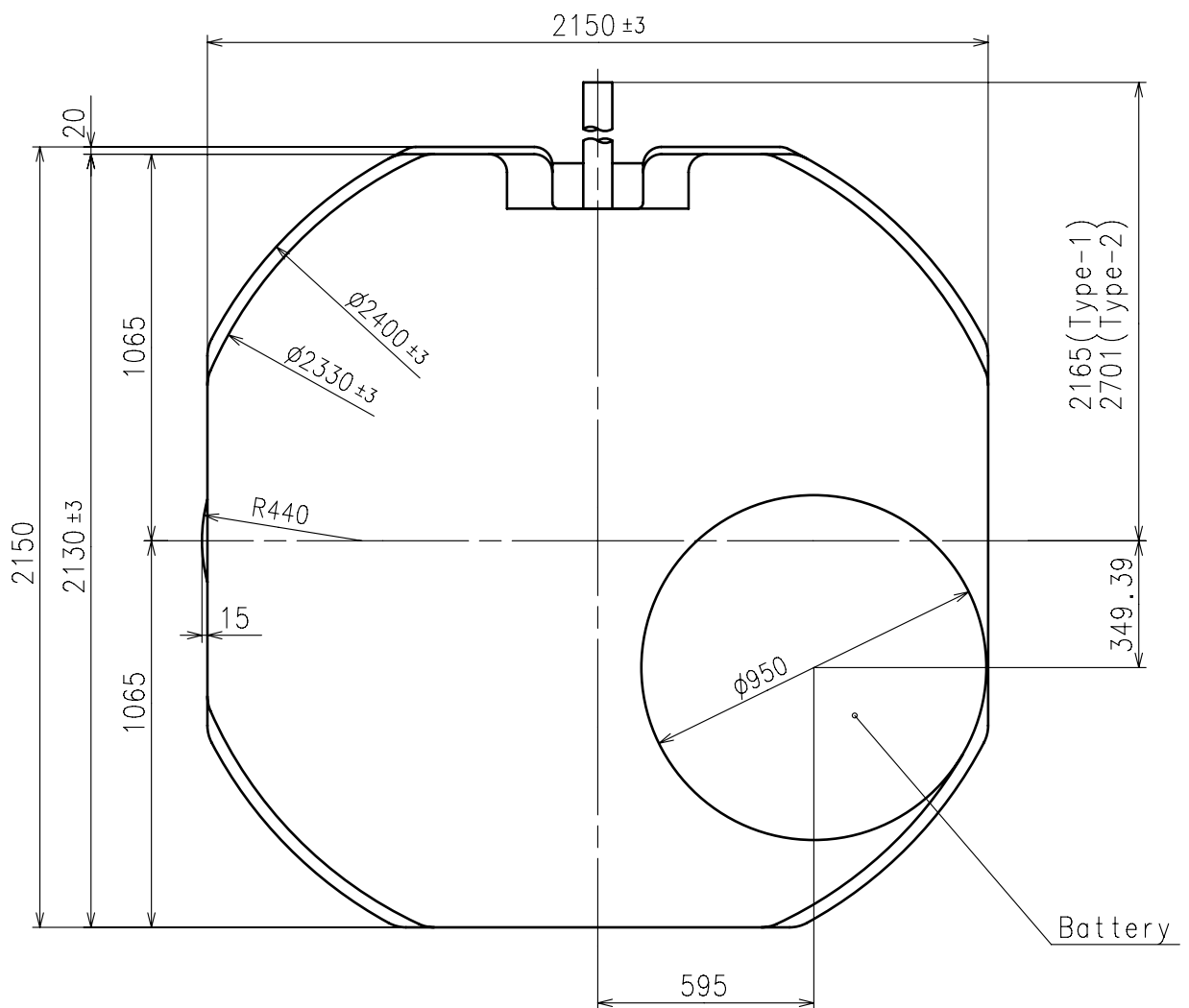


Center post		Type S (1) VX3RE1	Type L (3) VX3RE2	Type LL (4) VX3RE3
Maximum height from dial support	H1	180	242	262
Total height incl. movement	H2	485	547	567
Maximum height from dial support	H3	63	111	63

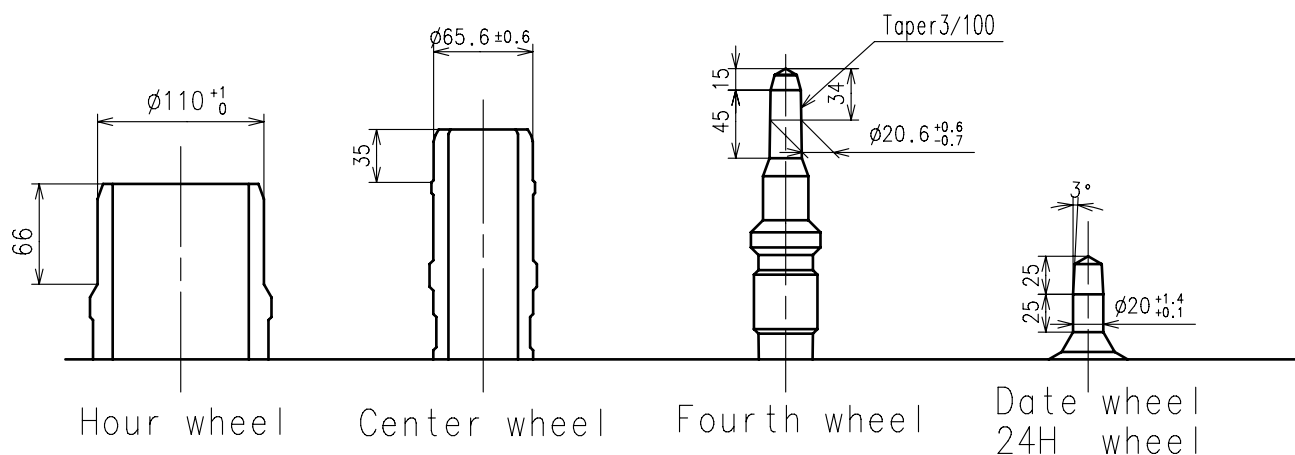
*1 52.5 *2 32.5

*1: First pullout stroke

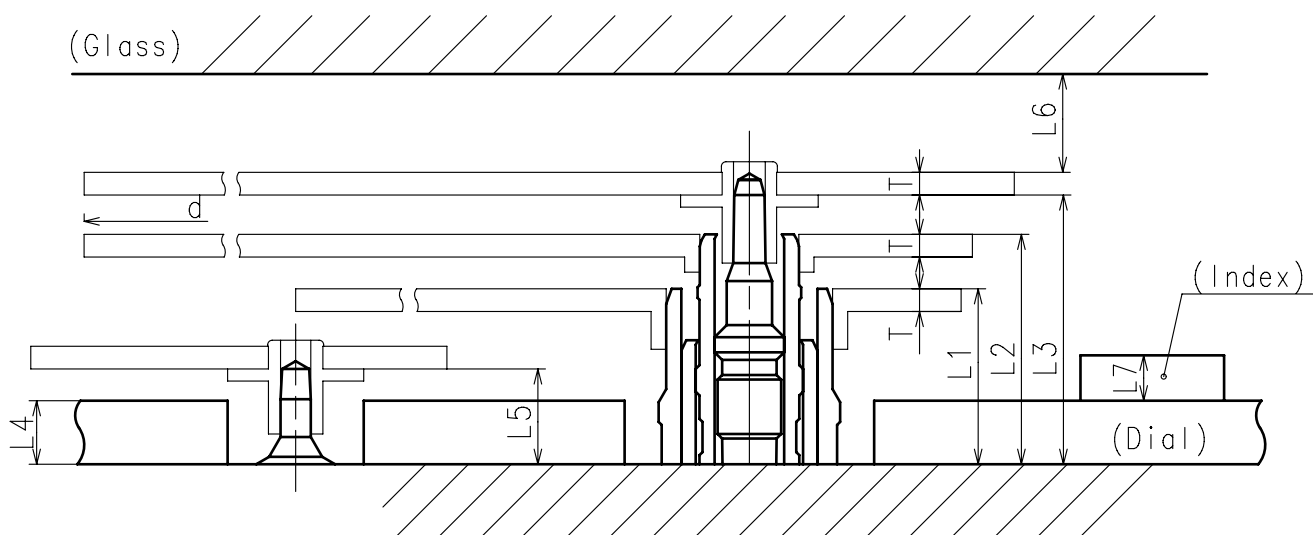
*2: Second pullout stroke



- Hour hand unbalance $\leq 0.5\mu\text{N}\cdot\text{m}$ ($50\mu\text{g}\cdot\text{m}$)
- Minute hand unbalance $\leq 0.6\mu\text{N}\cdot\text{m}$ ($60\mu\text{g}\cdot\text{m}$)
- Second hand unbalance $\leq 0.07\mu\text{N}\cdot\text{m}$ ($7\mu\text{g}\cdot\text{m}$)

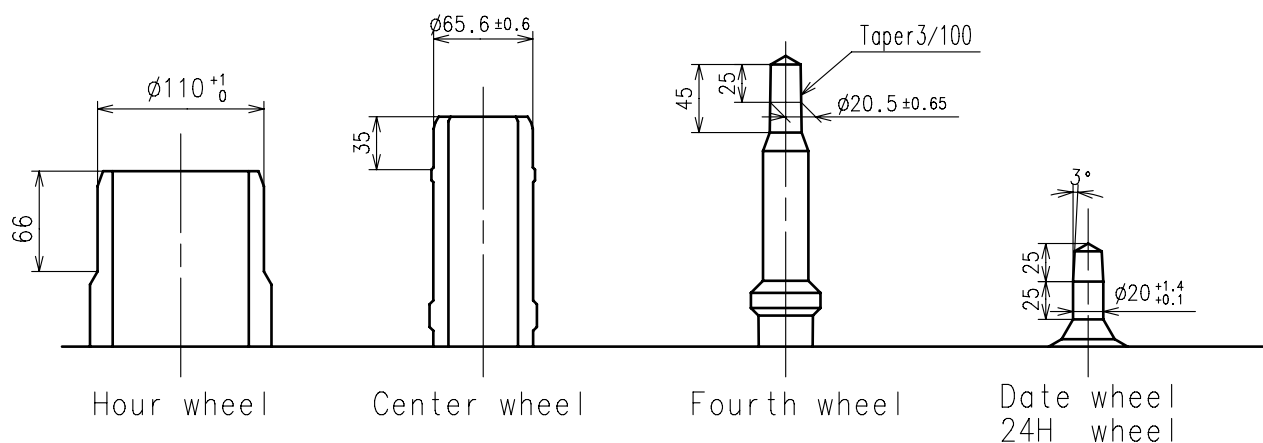


	Parts No.				
	Hour wheel	Center wheel	Forth wheel	Date wheel	24H wheel
Type S ⁽¹⁾ VX3RE1	0271563	0221575	0241528	0970538	1002503
Type L ⁽³⁾ VX3RE2	0271949	0221588	0241559	0970502	1002533

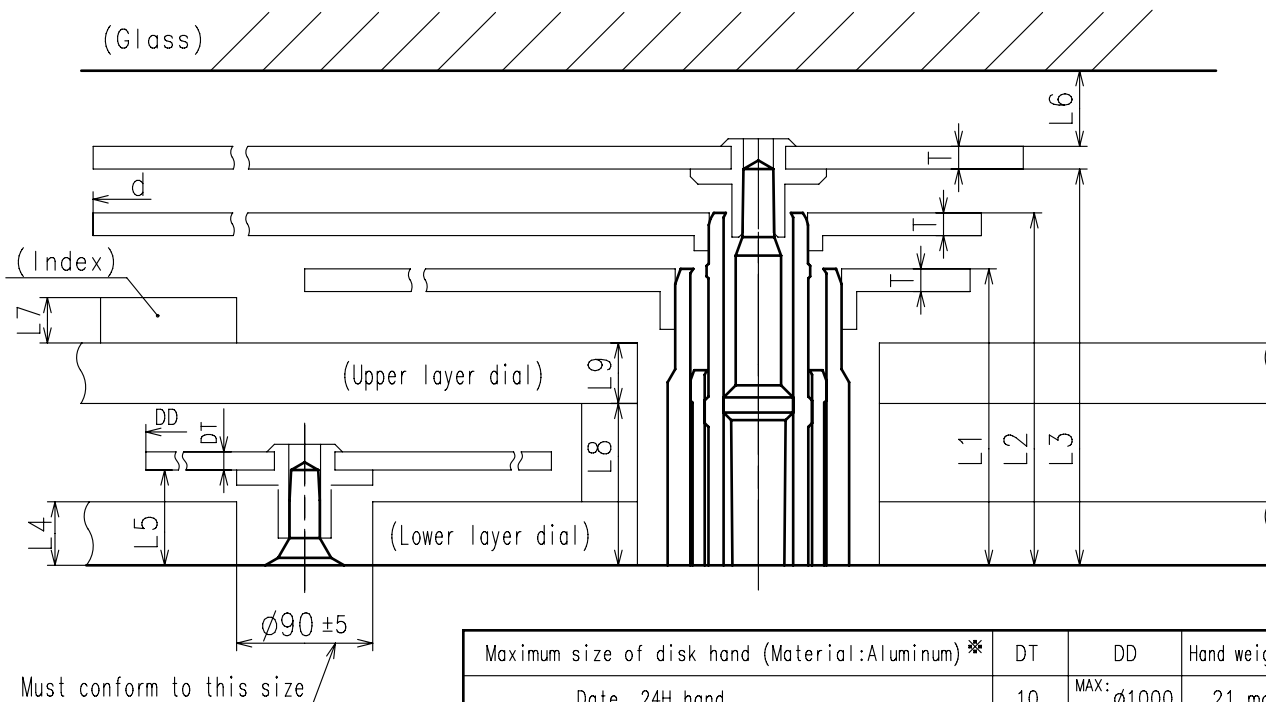


	L1	L2	L3	L4	L5	L6	L7	T	d
Type S ⁽¹⁾ VX3RE1	118	154	180	40	63	MIN: 50	MAX: 30	15	MAX: ø2500
Type L ⁽³⁾ VX3RE2	171	214	242	90	111	MIN: 50	MAX: 30	15	MAX: ø2500

- Hour hand unbalance $\leq 0.5\mu\text{N}\cdot\text{m}$ ($50\mu\text{g}\cdot\text{m}$)
- Minute hand unbalance $\leq 0.6\mu\text{N}\cdot\text{m}$ ($60\mu\text{g}\cdot\text{m}$)
- Second hand unbalance $\leq 0.07\mu\text{N}\cdot\text{m}$ ($7\mu\text{g}\cdot\text{m}$)

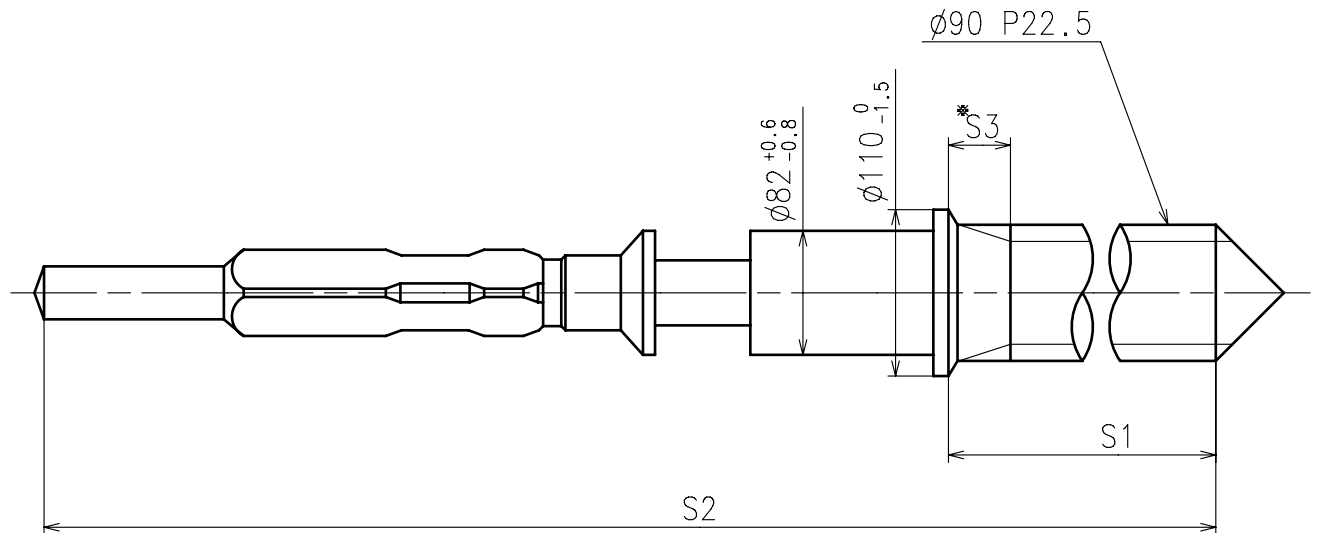


	Parts No.				
	Hour wheel	Center wheel	Forth wheel	Date wheel	24H wheel
Type LL(4) VX3RE3	0271566	0221587	0241529	0970538	1002503



※When a different material is used, it is necessary to follow the hand weight.

	L1	L2	L3	L4	L5	L6	L7	L8	L9	T	d
Type LL(4) VX3RE3	196	233	262	40	63	MIN: 50	MAX: 30	107	40	15	MAX: $\phi 2500$

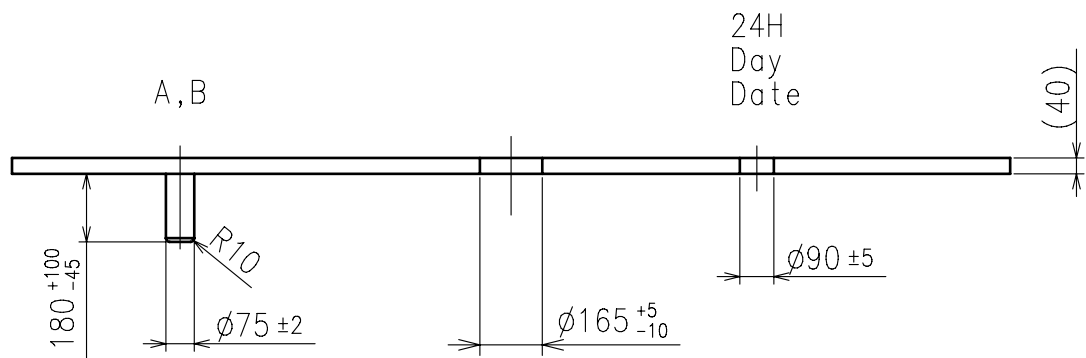
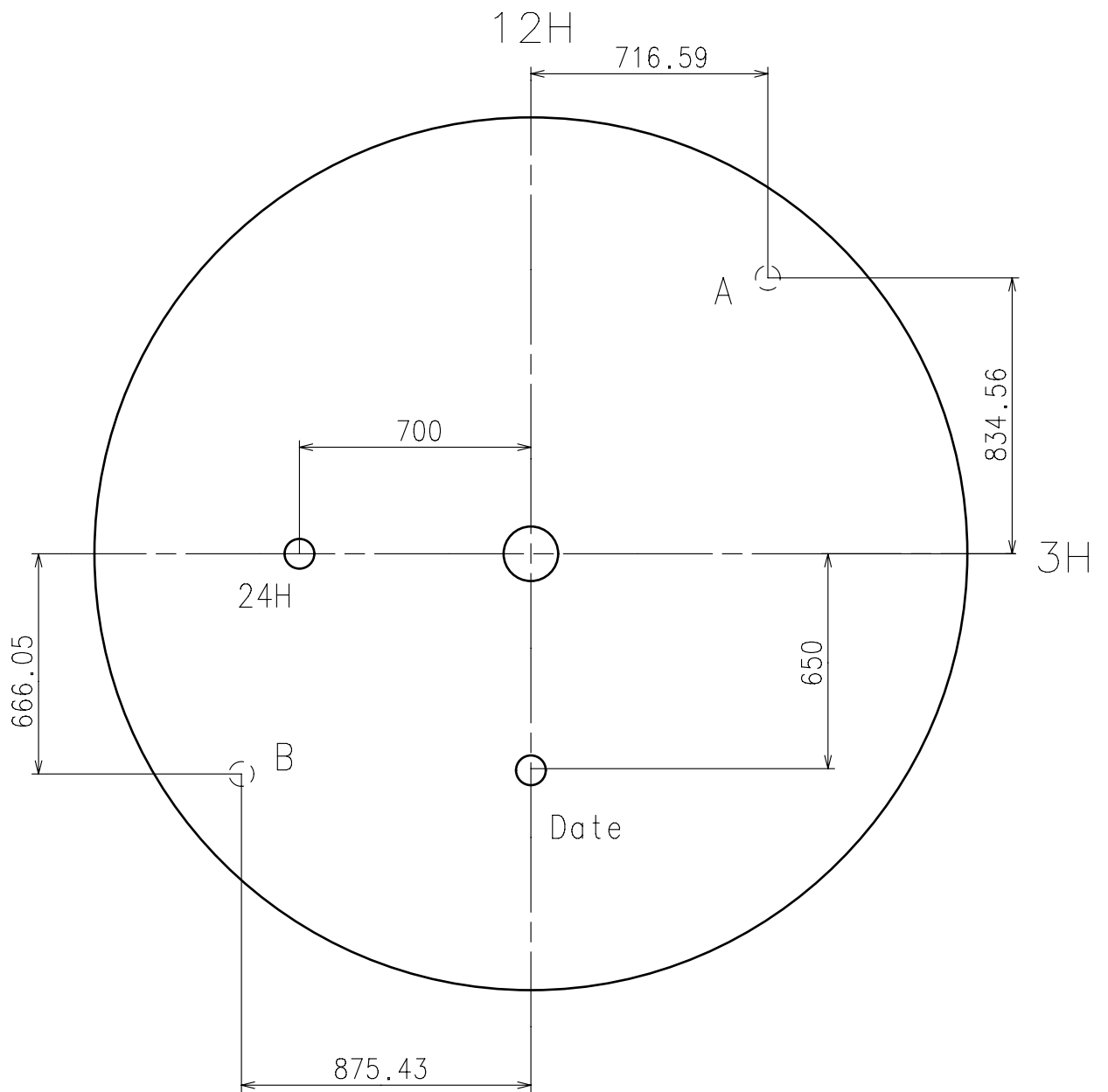


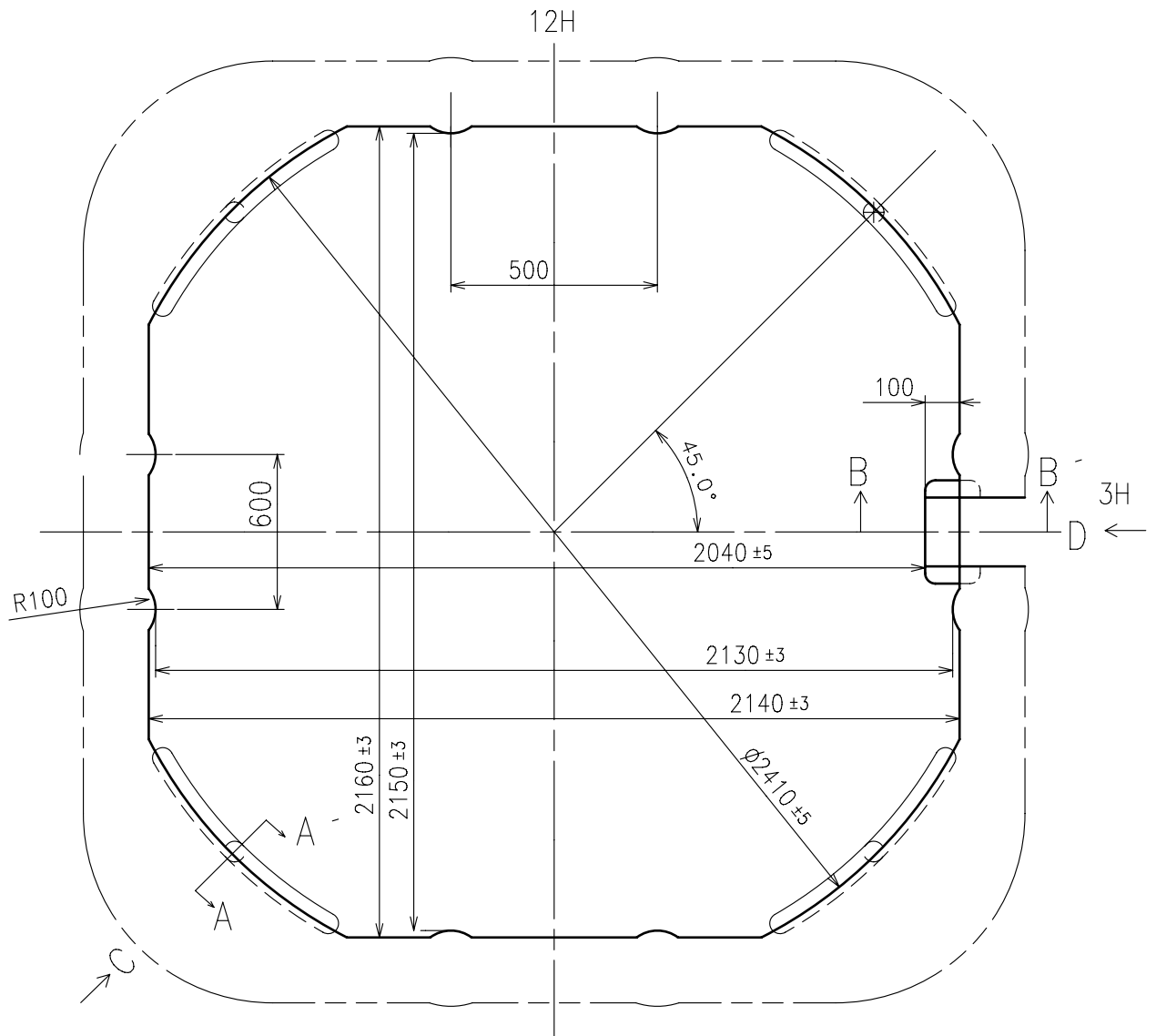
※ Not threaded

	Part No.	S1	S2	※ S3
Type-1 (Standard)	0351177	1366	1964	60
Type-2	0351577	1902	2500	1000

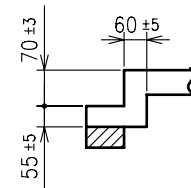
Material : Steel

Hardness : Vickers 600±50

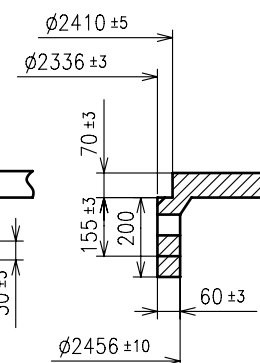




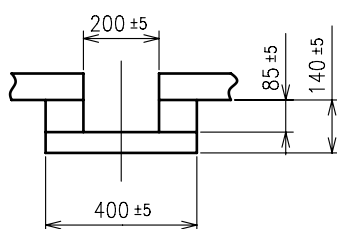
B-B' section



A-A' section



D view



C view

