



# Cal. VX3MA

$\phi$  23.3 mm  
H 3.05 mm

Items	Rev.	Page
Specifications	01	1
Appearance	00	2
Casing	02	3
Hand fitting	05	4
Hand setting stem	00	5
Dial	00	6
Casing ring	00	7

Date: 17/Jul./'12

**S.EPSON Products**

## MOVEMENT SPECIFICATIONS

Date : 29/May/'06

Rev. : 01

### CAL. VX3M

Analog Quartz 10 1/2" Slim Movement / 3 hands (H/M/S) and 3 eyes  
with Day / Date / 24H Rotary Disc ( Sun & Moon ) indicators

#### 1. MOVEMENT DIMENSIONS

Outside diameter	$\phi$ 24.00mm × 21.50mm(3-9H) × 22.10mm(12-6H)
Casing diameter	$\phi$ 23.30mm × 21.30mm(3-9H) × 21.50mm(12-6H)
Total height	3.05mm ( including battery )

#### 2. TIME STANDARD

Type of quartz oscillator	Tuning fork
Frequency of quartz oscillator	32,768 Hz
Accuracy	±20 seconds per month ( on wrist )
Operating temperature range	−5°C to +50°C
Regulation device	Nil ( Pre-adjusted )

#### 3. INDICATOR / FUNCTIONS

3 Hands	Hour / Minute / Second
2 Small hands	Day / Date
24H Rotary Disc	Sun & Moon indication
Reset switch	
Setting mechanism	Crown at normal position : Free Crown pulled out 1st click : Instant date change Crown pulled out 2nd click : Time setting ( Day change ) / Reset

#### 4. FEATURES

Jewels	1 Jewel
Anti-magnetism	Over 1600A/m ( Direct current magnetic field )
Maximum unbalance of hands	Second hand : 6 mg•mm Minute hand : 65 mg•mm

#### 5. BATTERY

Type / Size	Silver oxide battery / $\phi$ 9.5mm × t 1.6mm
Recommended battery	SR916SW ( Maxell, Panasonic, Sony, Seizaiken )
Nominal voltage	1.55 V
Battery life	Approx. 3 years
Driving current consumption	Approx. 0.85 $\mu$ A
Operation stopping voltage	0.9 V

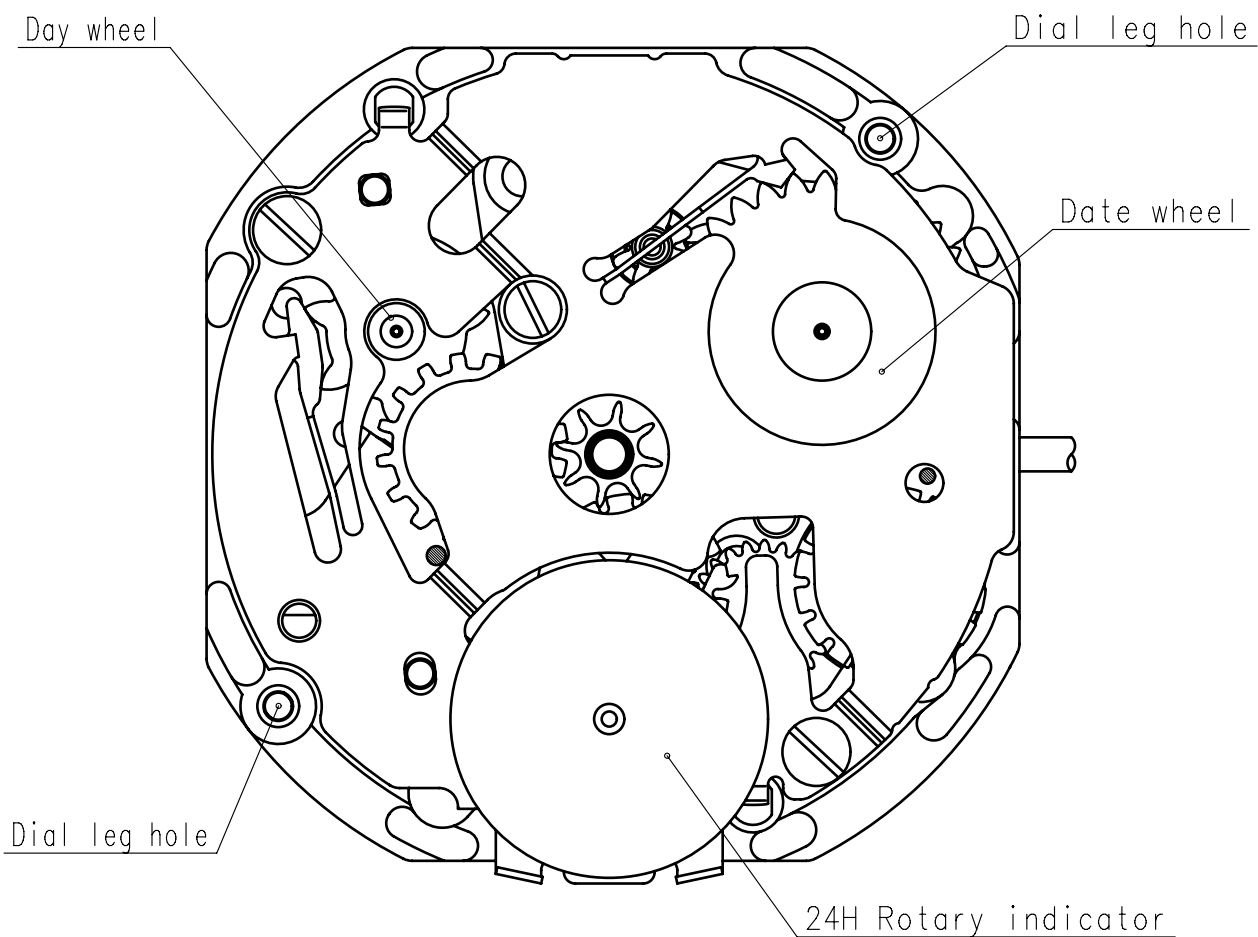
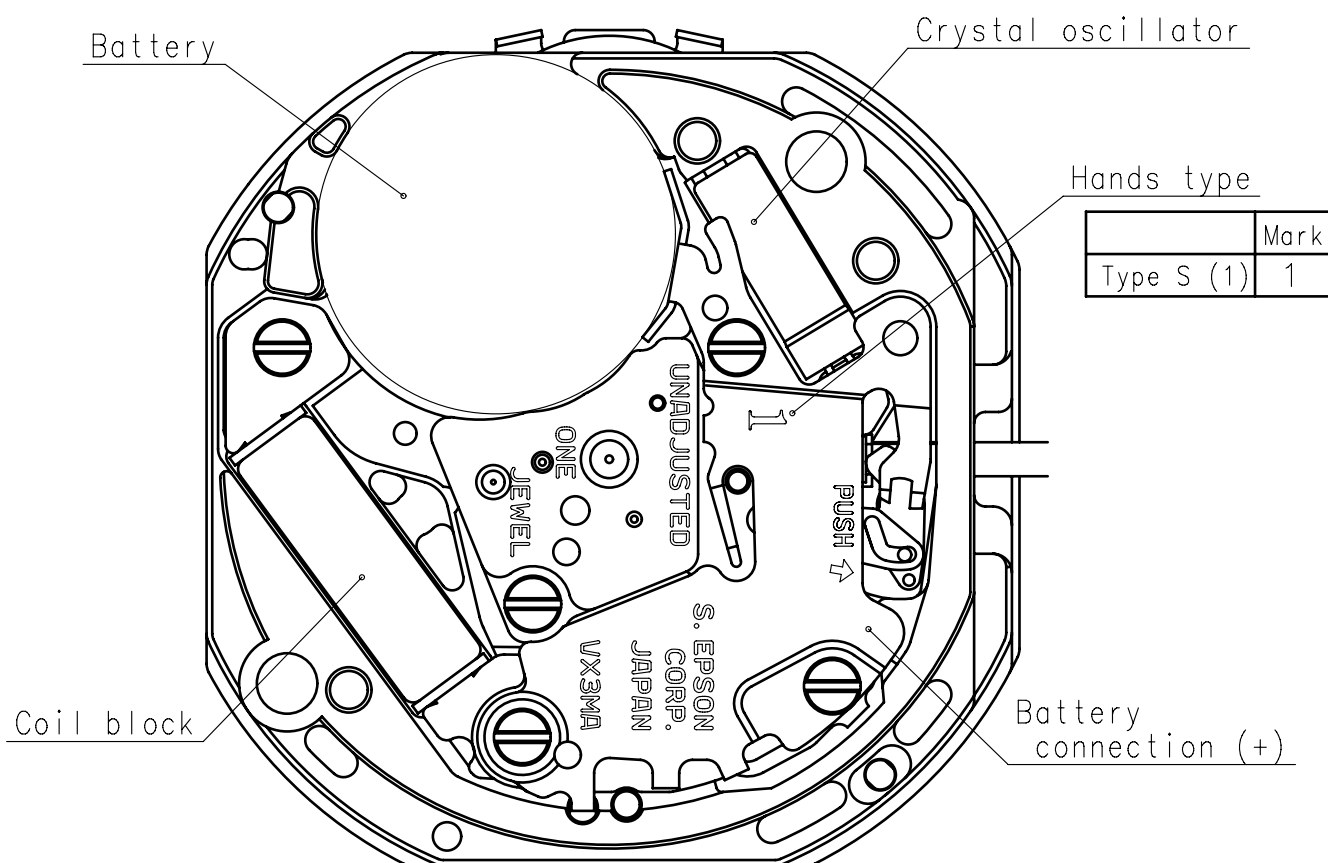
#### 6. SEPARATED PARTS (Parts code)

Hand setting stem	0354531 or 0354534
Battery	SR916SW

#### 7. TEST OF ACCURACY

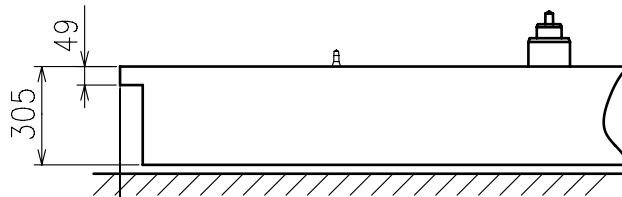
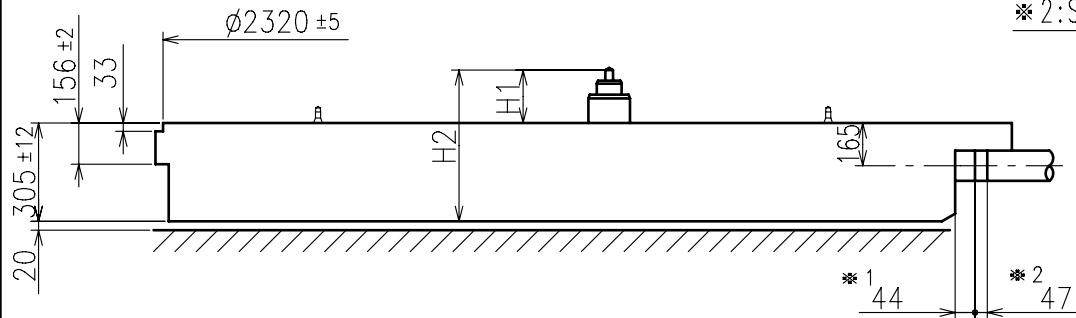
Equipment to be used	SEIKO quartz tester QT-99, Greiner quartz timer-C , Witschi Q-tester 4000
Duration of measurement	10 seconds
Microphone to be used	Electromagnetic detection type

All specifications are subject to change without notice.

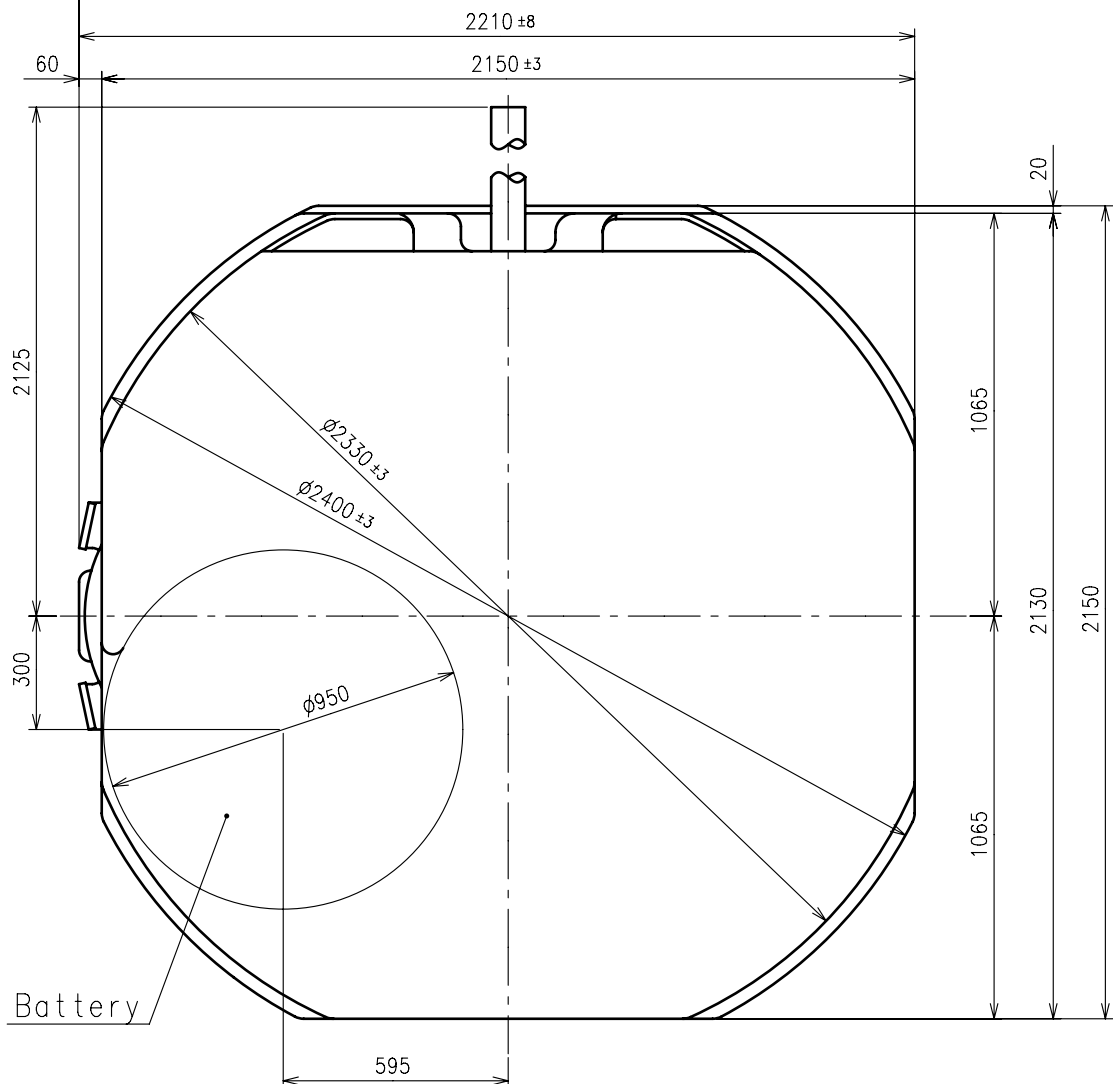


※1:First pullout stroke

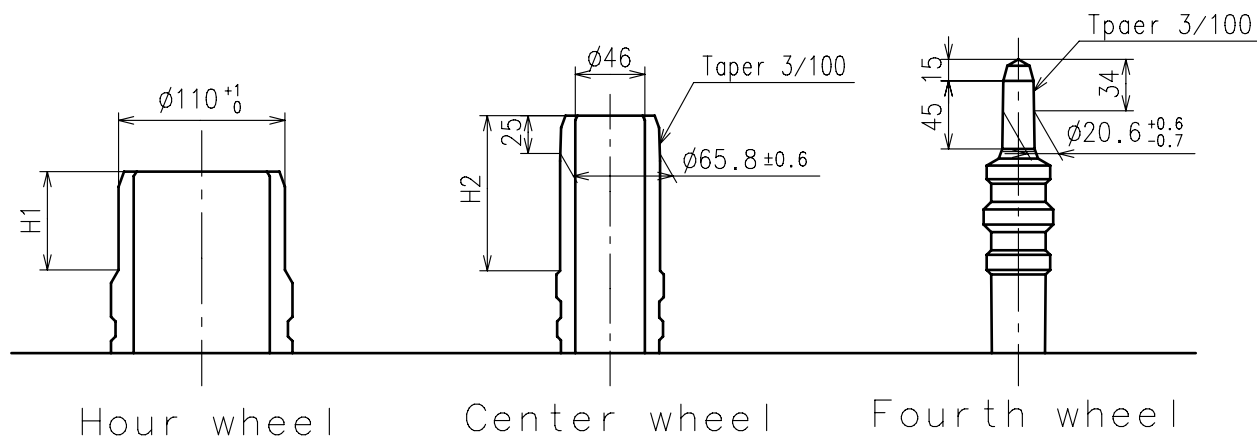
※2:Second pullout stroke



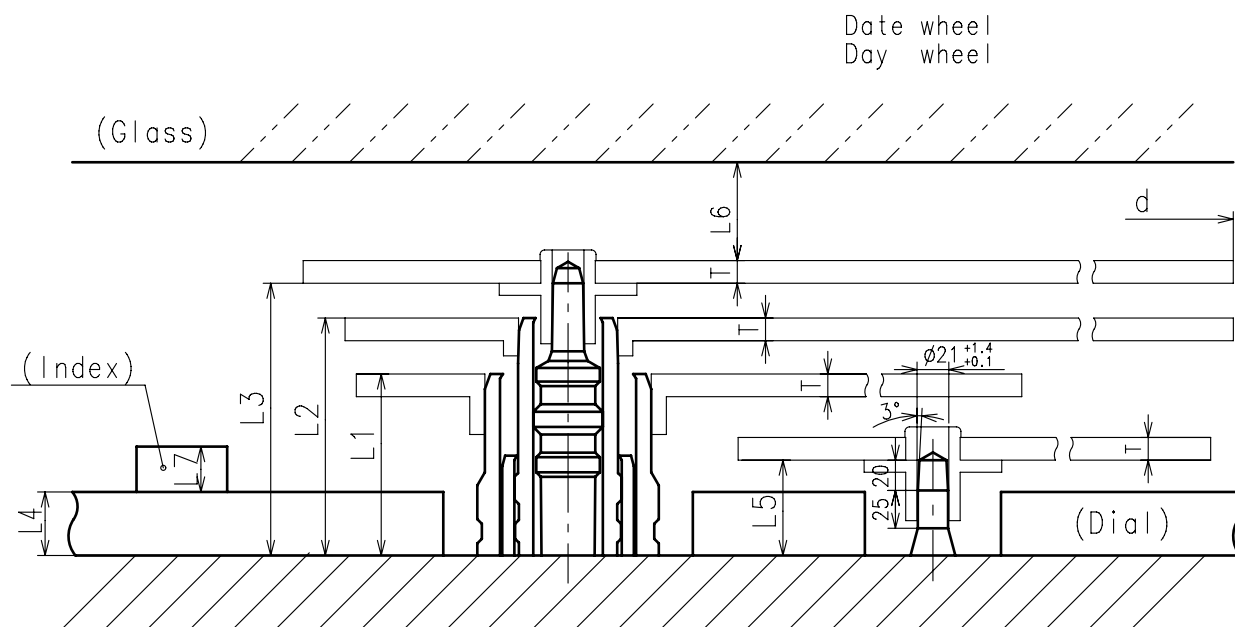
Center post		Type S (1) VX3MA1
Maximum height from dial support	H1	180
Total height incl. movement	H2	485



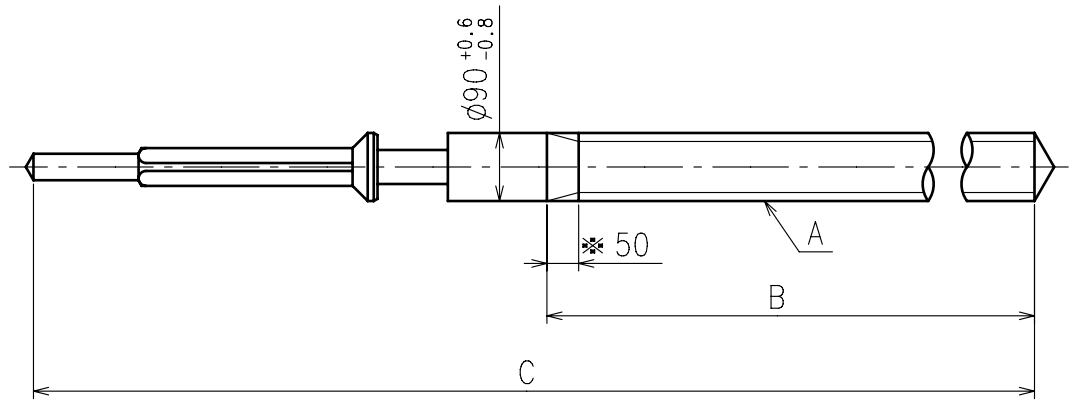
- ※ Minute hand unbalance  $\leq 65 \mu \text{g} \cdot \text{m} (0.64 \mu \text{N} \cdot \text{m})$
- ※ Second hand unbalance  $\leq 6 \mu \text{g} \cdot \text{m} (0.06 \mu \text{N} \cdot \text{m})$



	Parts No.			Dimension	
	Hour wheel	Center wheel	Fourth wheel	H1	H2
Type S (1) VX3MA1	0271538	0221537	0241537	65	103



	L1	L2	L3	L4	L5	L6	L7	T	d
Type S (1) VX3MA1	120	157	180	40	63	MIN: 50	MAX: 30	15	MAX: $\phi 2500$



※ Not threaded

	Part No.	A	B	C
Standard Type 1	0354531	$\phi 90$ P22.5	1225	1904
Type 2	0354534	$\phi 90$ P22.5	1500	3055

Material : Steel

Hardness : Vickers  $600 \pm 50$

