



Cal. VX3LA

ϕ 23.3 mm
H 3.05 mm

Items	Rev.	Page
Specifications	01	1
Appearance	01	2
Casing	03	3
Hand fitting	06	4
Hand setting stem	00	5
Dial	00	6
Casing ring	00	7

Date: 17/Jul./'12

S.EPSON Products

CAL. VX3L

Analog Quartz 10 1/2" Slim Movement / 3 hands (H/M/S) and 3 eyes
with Day / Date / 24Hour indicators

1. MOVEMENT DIMENSIONS

Outside diameter	ϕ 24.00mm × 21.50mm(3-9H) × 21.50mm(12-6H)
Casing diameter	ϕ 23.30mm × 21.30mm(3-9H) × 21.50mm(12-6H)
Total height	3.05mm (including battery)

2. TIME STANDARD

Type of quartz oscillator	Tuning fork
Frequency of quartz oscillator	32,768 Hz
Accuracy	±20 seconds per month (on wrist)
Operating temperature range	−5°C to +50°C
Regulation device	Nil (Pre-adjusted)

3. INDICATOR / FUNCTIONS

3 Hands	Hour / Minute / Second
3 Small hands	Day / Date / 24Hour
Reset switch	
Setting mechanism	Crown at normal position : Free Crown pulled out 1st click : Instant date change Crown pulled out 2nd click : Time setting (Day change) / Reset

4. FEATURES

Jewels	1 Jewel
Anti-magnetism	Over 1600A/m (Direct current magnetic field)
Maximum unbalance of hands	Second hand : 6 mg•mm Minute hand : 65 mg•mm

5. BATTERY

Type / Size	Silver oxide battery / ϕ 9.5mm × t 1.6mm
Recommended battery	SR916SW (Maxell, Panasonic, Sony, Seizaiken)
Nominal voltage	1.55 V
Battery life	Approx. 3 years
Driving current consumption	Approx. 0.85 μ A
Operation stopping voltage	0.9 V

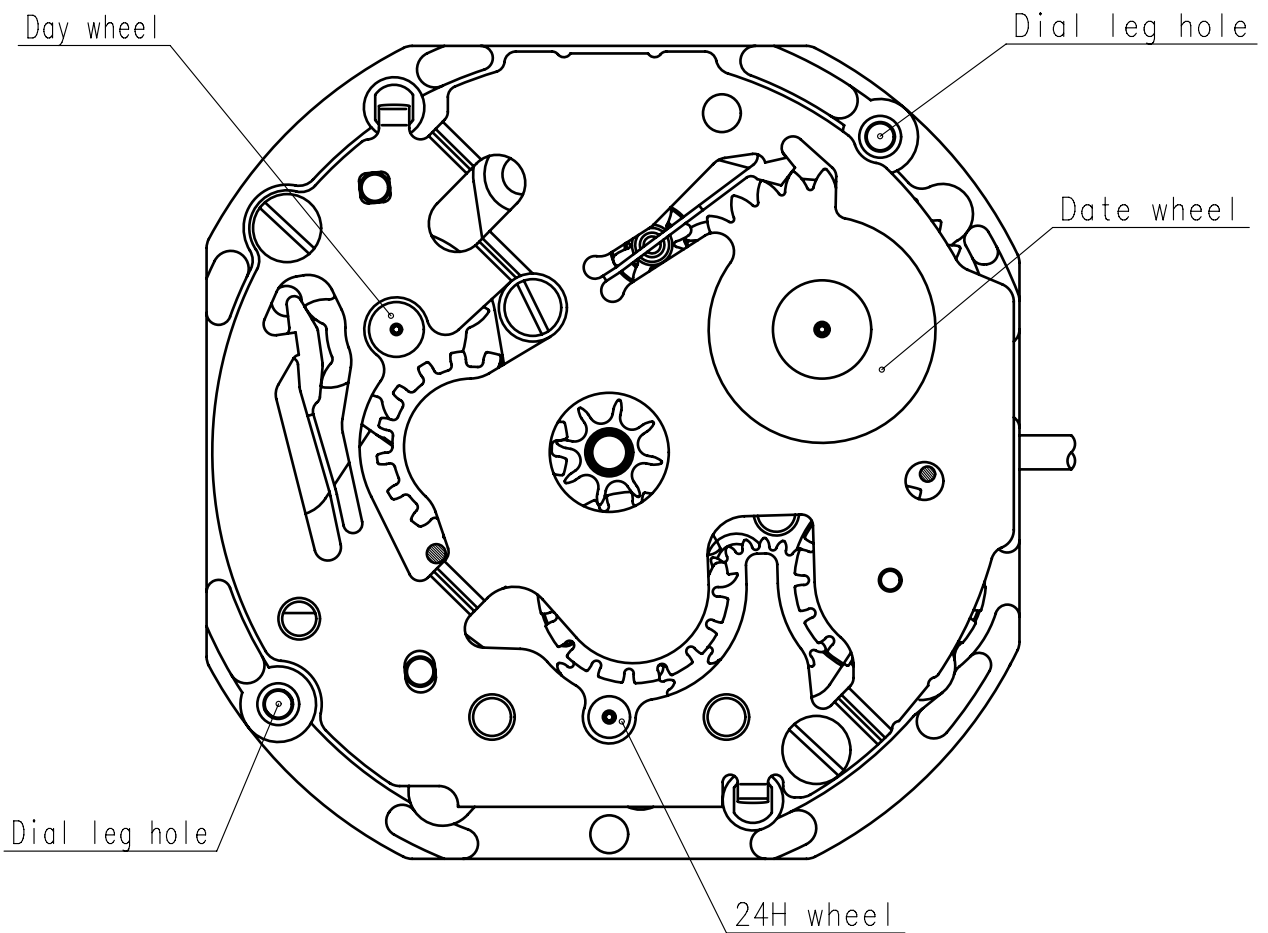
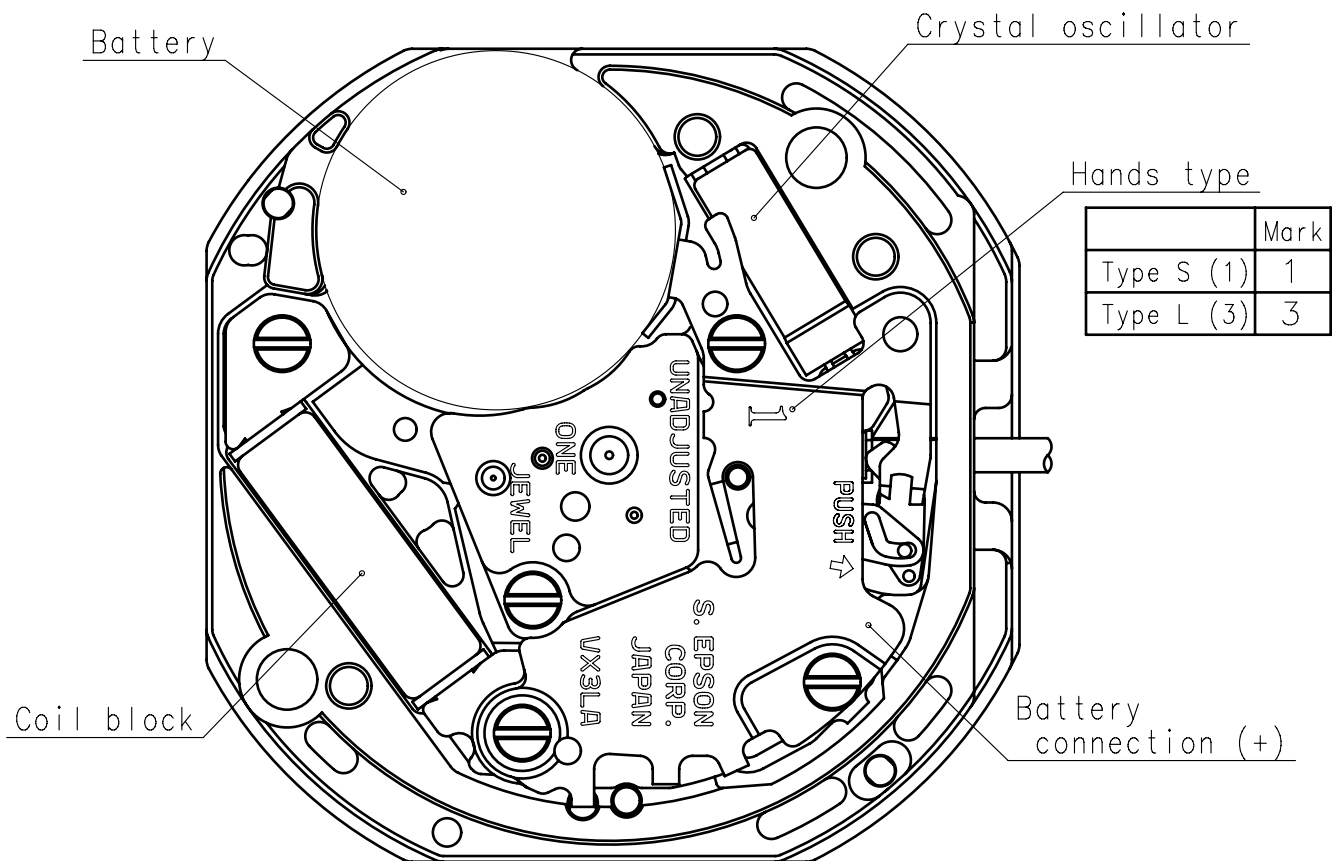
6. SEPARATED PARTS (Parts code)

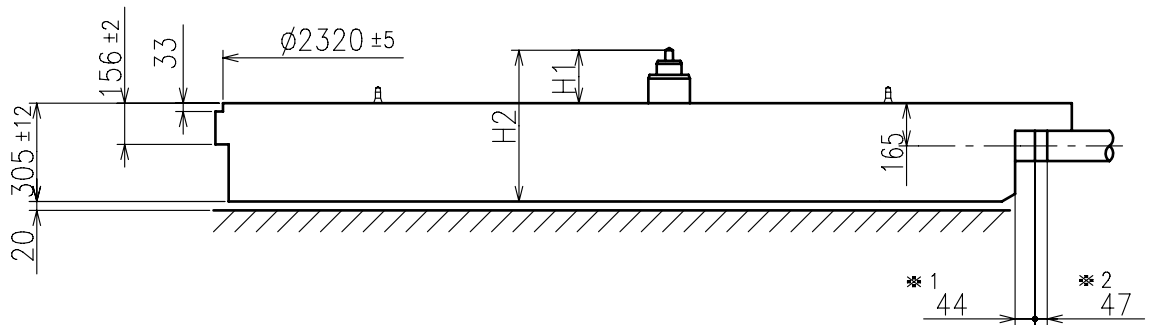
Hand setting stem	0354531 or 0354534
Battery	SR916SW

7. TEST OF ACCURACY

Equipment to be used	SEIKO quartz tester QT-99, Greiner quartz timer-C , Witschi Q-tester 4000
Duration of measurement	10 seconds
Microphone to be used	Electromagnetic detection type

All specifications are subject to change without notice.

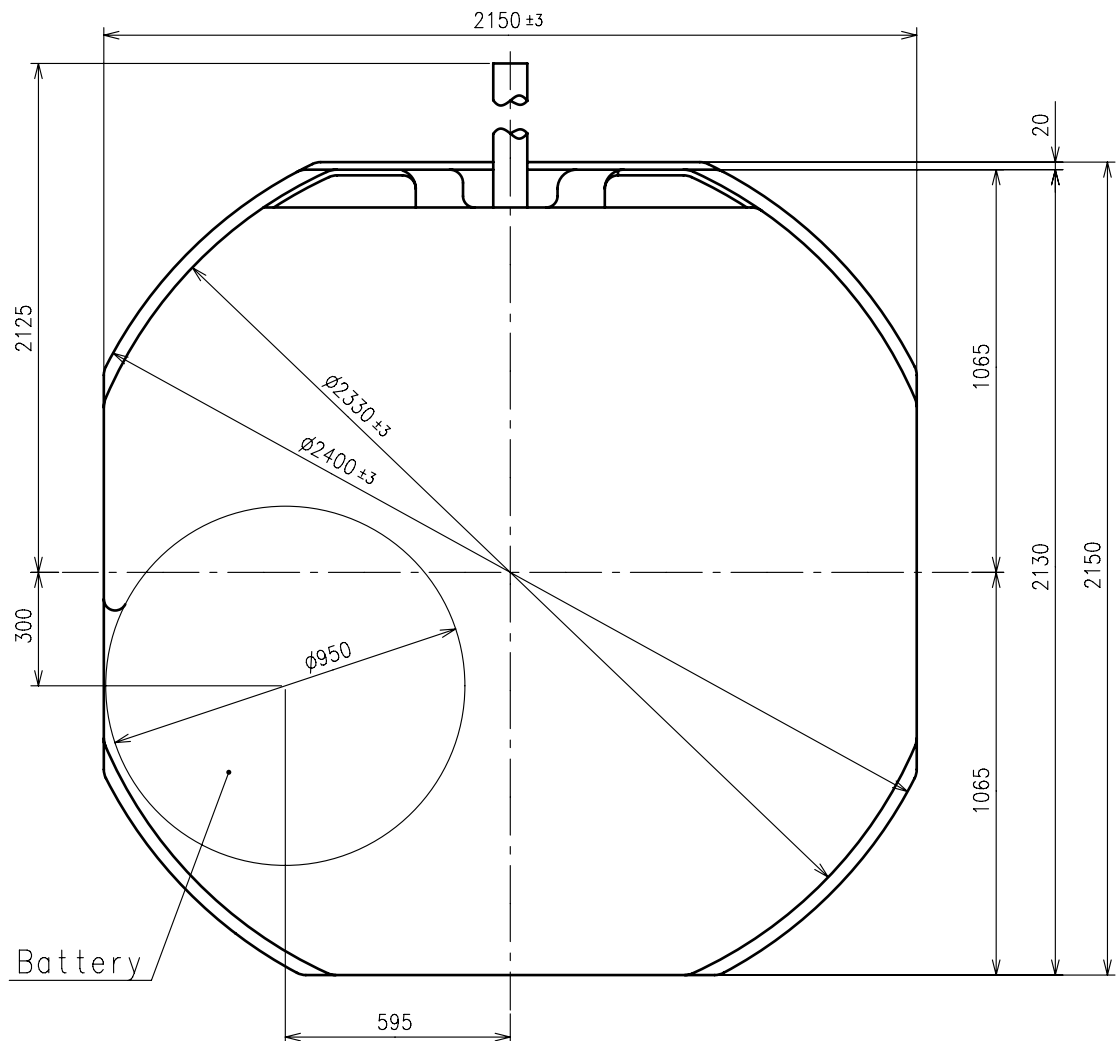




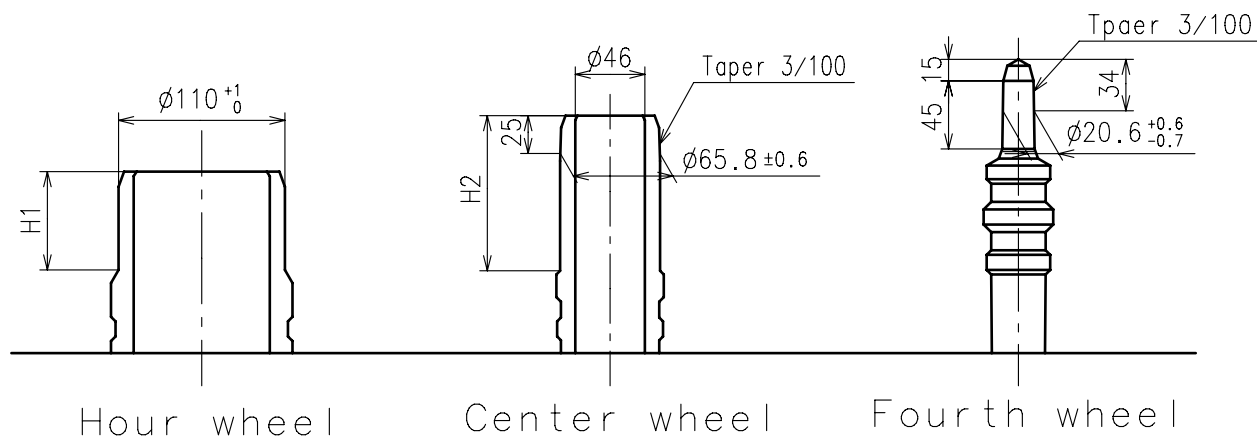
Center post		Type S (1) VX3LA1	Type L (3) VX3LA2
Maximum height from dial support	H1	180	220
Total height incl. movement	H2	485	525

*1:First pullout stroke

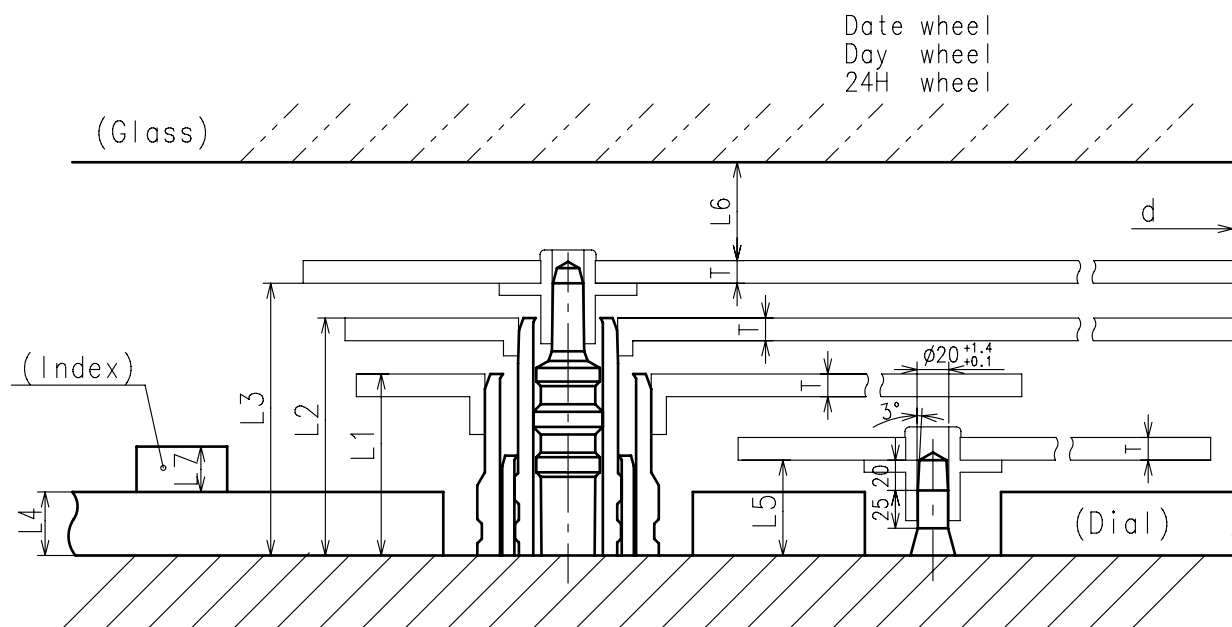
*2:Second pullout stroke



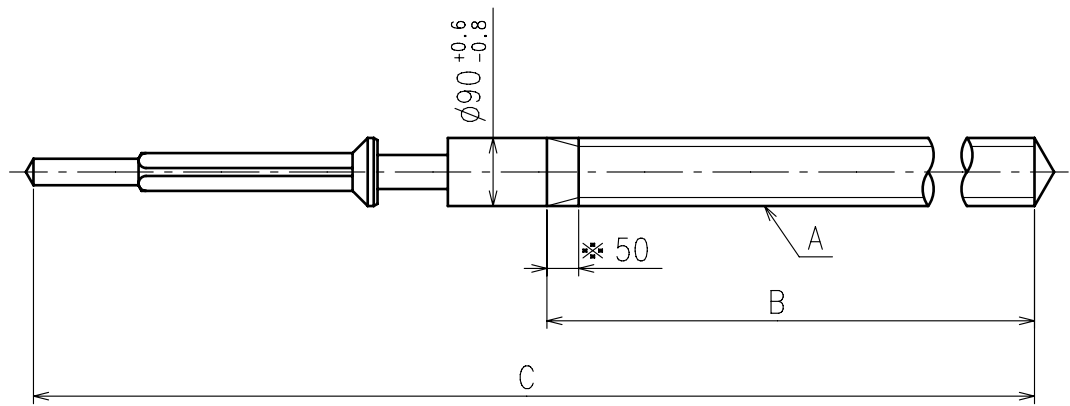
- ※ Minute hand unbalance $\leq 65 \mu \text{g} \cdot \text{m} (0.64 \mu \text{N} \cdot \text{m})$
- ※ Second hand unbalance $\leq 6 \mu \text{g} \cdot \text{m} (0.06 \mu \text{N} \cdot \text{m})$



	Parts No.			Dimension	
	Hour wheel	Center wheel	Fourth wheel	H1	H2
Type S ⁽¹⁾ VX3LA1	0271538	0221537	0241537	65	103
Type L ⁽³⁾ VX3LA2	0271579	0221592	0241563	65	141



	L1	L2	L3	L4	L5	L6	L7	T	d
Type S ⁽¹⁾ VX3LA1	120	157	180	40	63	MIN: 50	MAX: 30	15	MAX: 2500
Type L ⁽³⁾ VX3LA2	156	195	220	70	99	MIN: 50	MAX: 30	15	MAX: 2500

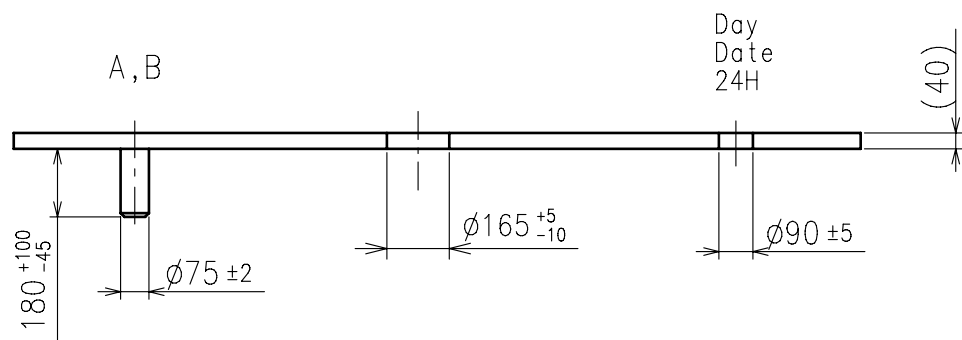
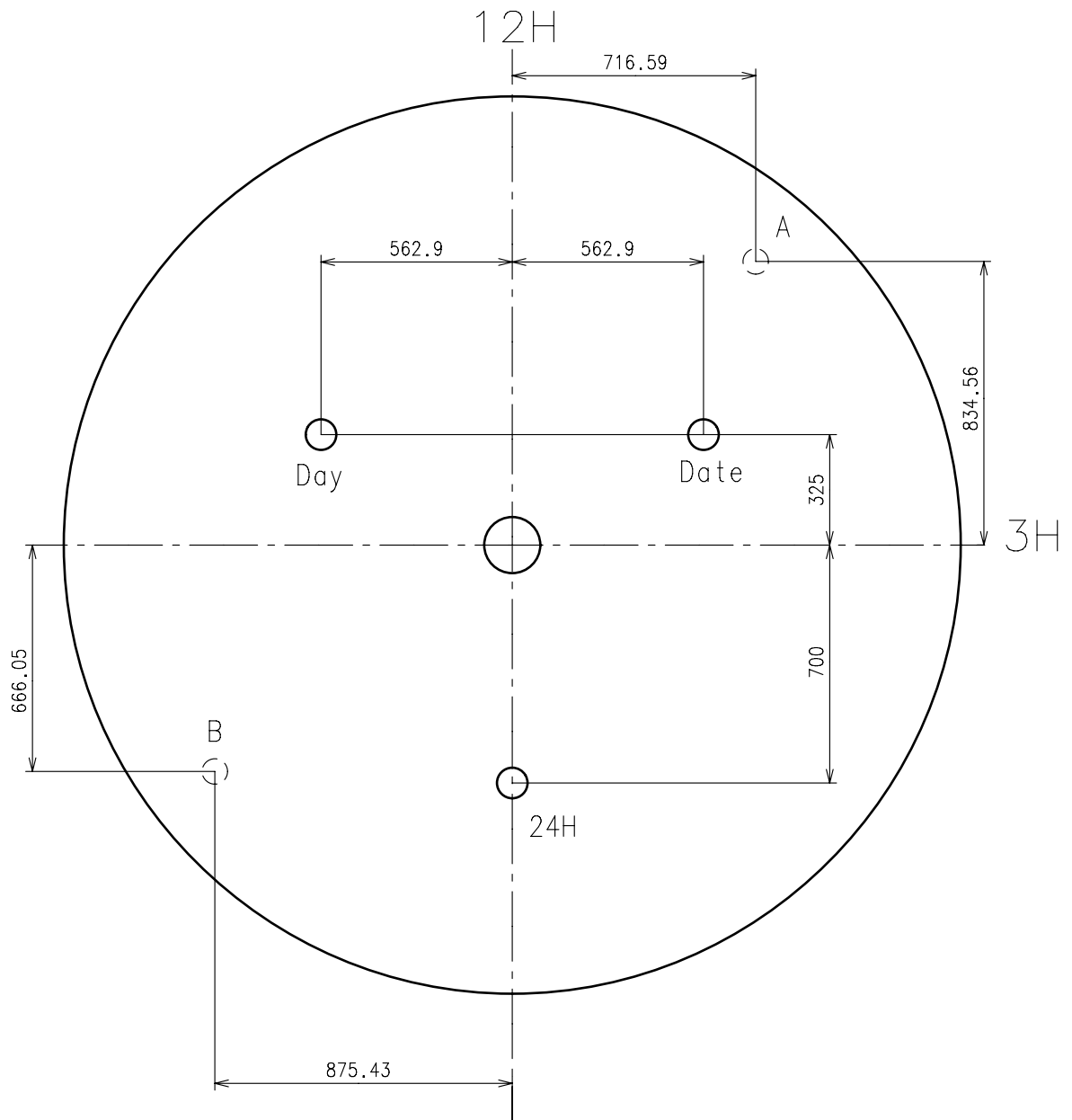


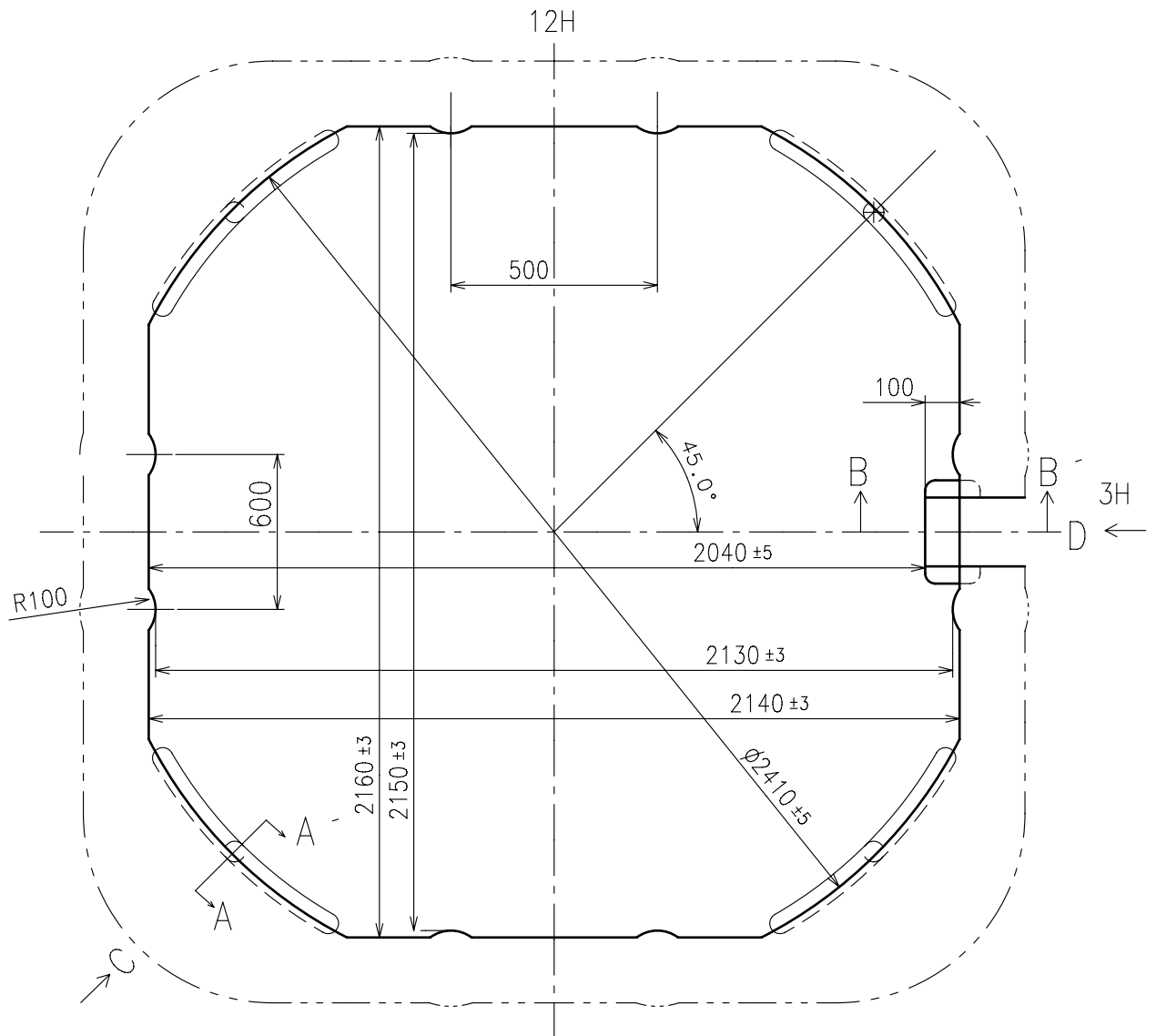
※ Not threaded

	Part No.	A	B	C
Standard Type 1	0354531	$\phi 90$ P22.5	1225	1904
Type 2	0354534	$\phi 90$ P22.5	1500	3055

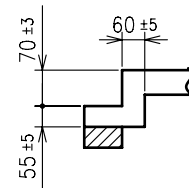
Material : Steel

Hardness : Vickers 600 ± 50

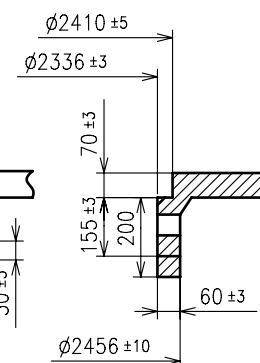




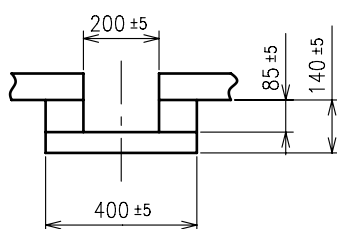
B-B section



A-A section



D view



C view

