

# CAL.VX3H,VX3M

3 Hands 3 Eyes

# 1/3 Instructions

## Features

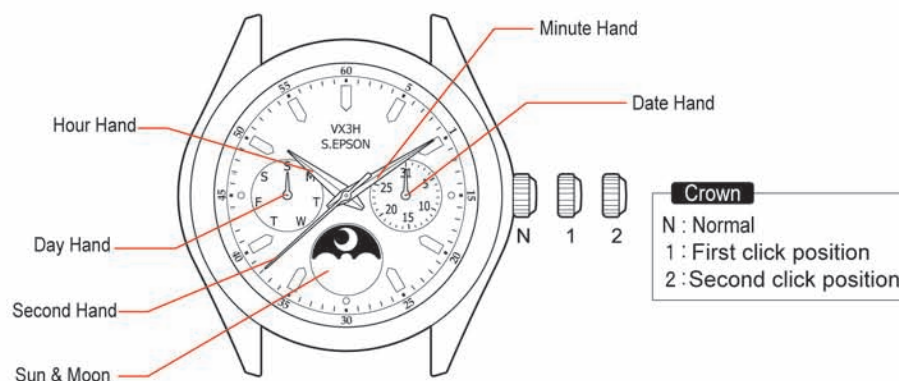
- ◆ Hour, Minute and Second Hands
- ◆ Day, Date indicators
- ◆ 24-Hour Sun&Moon rotating diaplay



**VX3H**  
3H: Date, 9H: Day



**VX3M**  
2H: Date, 10H: Day



Movement size	10 1/2'''
Outside Diameter	22.10 mm (12H-6H) X 21.50 mm (3H-9H)
Casing Diameter	21.50 mm (12H-6H) X 21.30 mm (3H-9H)
Height	3.05 mm (Including Battery)
Battery	SR916SW
Battery Life Approx.	3 years

### ◆ Timing of day changes

The date hand moves to the next between 11:00p.m. and 12:00a.m.

The day hand moves to the next between 2:00a.m. and 4:00a.m.



**S.EPSON Products**

JAPAN TECHNOLOGY & QUALITY

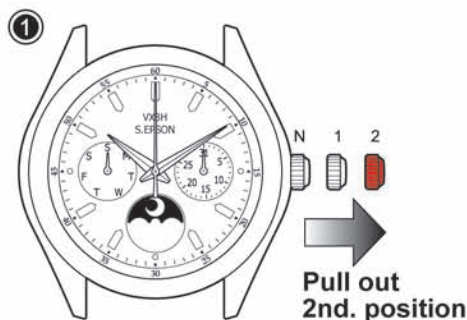
[www.timemodule.com](http://www.timemodule.com)

# CAL.VX3H,VX3M

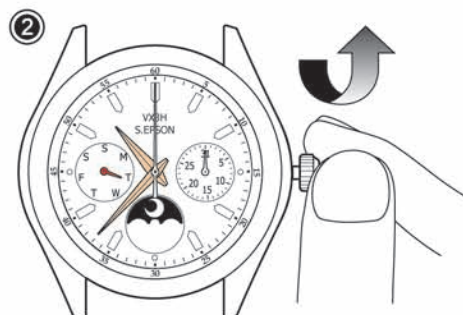
3 Hands 3 Eyes

## 2/3 Instructions

### How to Set Time and Day:

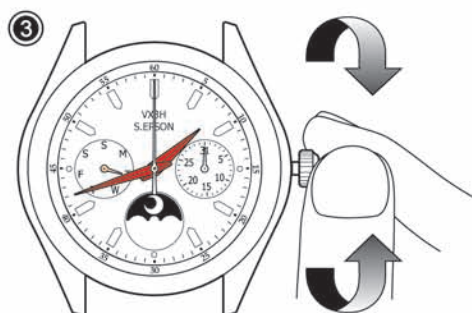


- Pull crown out to the 2nd click position when the second hand is at the 12 o'clock position.

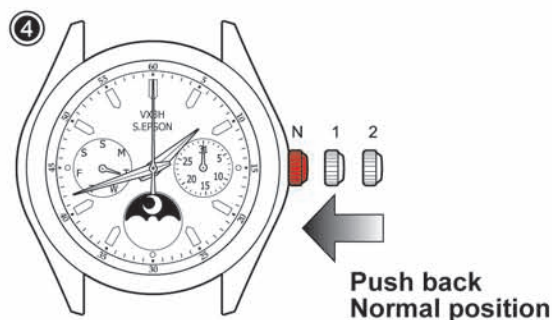


- Turn the crown clockwise to advance hour and minute hands until day hand is set to the desired day of the week.

*Note: The day hand will not back by turning the crown counterclockwise.*



- Turn to set the time taking AM or PM into consideration.



- Push crown back to normal position.

### ◆ Advance Setting Technique

- To advance the day hand quickly, turn back the hour and minute hands 4 to 5 hours beyond the point the day changes (between 11:00 p.m. and 4:00 a.m.) and then advance them again until the day hand is set to the next.

*Note: The day hand will not move back by turning the crown counterclockwise.*

- The Sun&Moon rotary disc moves correspondingly with the hour hand.
- When setting the hour hand, check that the Sun&Moon rotay disc is correctly set.
- When setting the minute hand, advance it 4 to 5 minutes ahead of the desired time and then turn it back to the exact time.



**S.EPSON Products**

JAPAN TECHNOLOGY & QUALITY

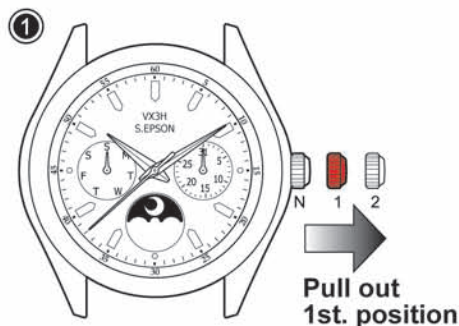
[www.timemodule.com](http://www.timemodule.com)

# CAL.VX3H,VX3M

3 Hands 3 Eyes

## 3/3 Instructions

### How to Set Date:

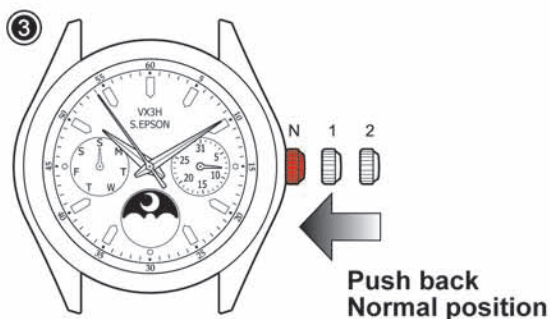


- Pull crown out to the 1st click position.



- Turn the crown clockwise to set date hand.

*Note: The date hand will not back by turning the crown counterclockwise.*



- Push crown back to normal position.

### ◆ Advance Setting Technique

- Do not set the date hand between 9:00 p.m. and 1:00 a.m. Otherwise, it may not turn properly.
- While setting the date hand, check that it moves properly in one-day increments.
- It is necessary to adjust the date on the first day after a 30-day month and February.



**S.EPSON Products**

JAPAN TECHNOLOGY & QUALITY

[www.timemodule.com](http://www.timemodule.com)