



Cal. VX36B

ϕ 23.3 mm
H 3.05 mm

Items	Rev.	Page
Specifications	00	1
Appearance	01	2
Casing	03	3
Hand fitting	04	4
Hand setting stem	00	5
Dial	00	6
Casing ring	00	7

Date: 17/Jul./'12

S.EPSON Products

MOVEMENT SPECIFICATIONS

Date : 12/Oct./'06

Rev. : 00

CAL. VX36B

Analog Quartz 10 1/2" Slim Movement
3 hands (H/M/S) and 2 eyes with Day / Date indicators

1. MOVEMENT DIMENSIONS

Outside diameter	$\phi 24.00\text{mm} \times 21.50\text{mm}(3\text{-}9\text{H}) \times 21.50\text{mm}(12\text{-}6\text{H})$
Casing diameter	$\phi 23.30\text{mm} \times 21.30\text{mm}(3\text{-}9\text{H}) \times 21.50\text{mm}(12\text{-}6\text{H})$
Total height	3.05mm (including battery)

2. TIME STANDARD

Type of quartz oscillator	Tuning fork
Frequency of quartz oscillator	32,768 Hz
Accuracy	± 20 seconds per month (on wrist)
Operating temperature range	-5°C to $+50^{\circ}\text{C}$
Regulation device	Nil (Pre-adjusted)

3. INDICATOR / FUNCTIONS

3 Hands	Hour / Minute / Second
2 Small hands	Day / Date
Reset switch	
Setting mechanism	Crown at normal position : Free Crown pulled out 1st click : Instant date change Crown pulled out 2nd click : Time setting (Day change) / Reset

4. FEATURES

Jewels	1 Jewel
Anti-magnetism	Over 1600A/m (Direct current magnetic field)
Maximum unbalance of hands	Second hand : $0.06 \mu\text{N}\cdot\text{m}$ Minute hand : $0.64 \mu\text{N}\cdot\text{m}$

5. BATTERY

Type / Size	Silver oxide battery / $\phi 9.5\text{mm} \times t 1.6\text{mm}$
Recommended battery	SR916SW (Maxell, Panasonic, Sony, Seizaiken)
Nominal voltage	1.55 V
Battery life	Approx. 3 years
Driving current consumption	Approx. $0.85 \mu\text{A}$
Operation stopping voltage	0.9 V

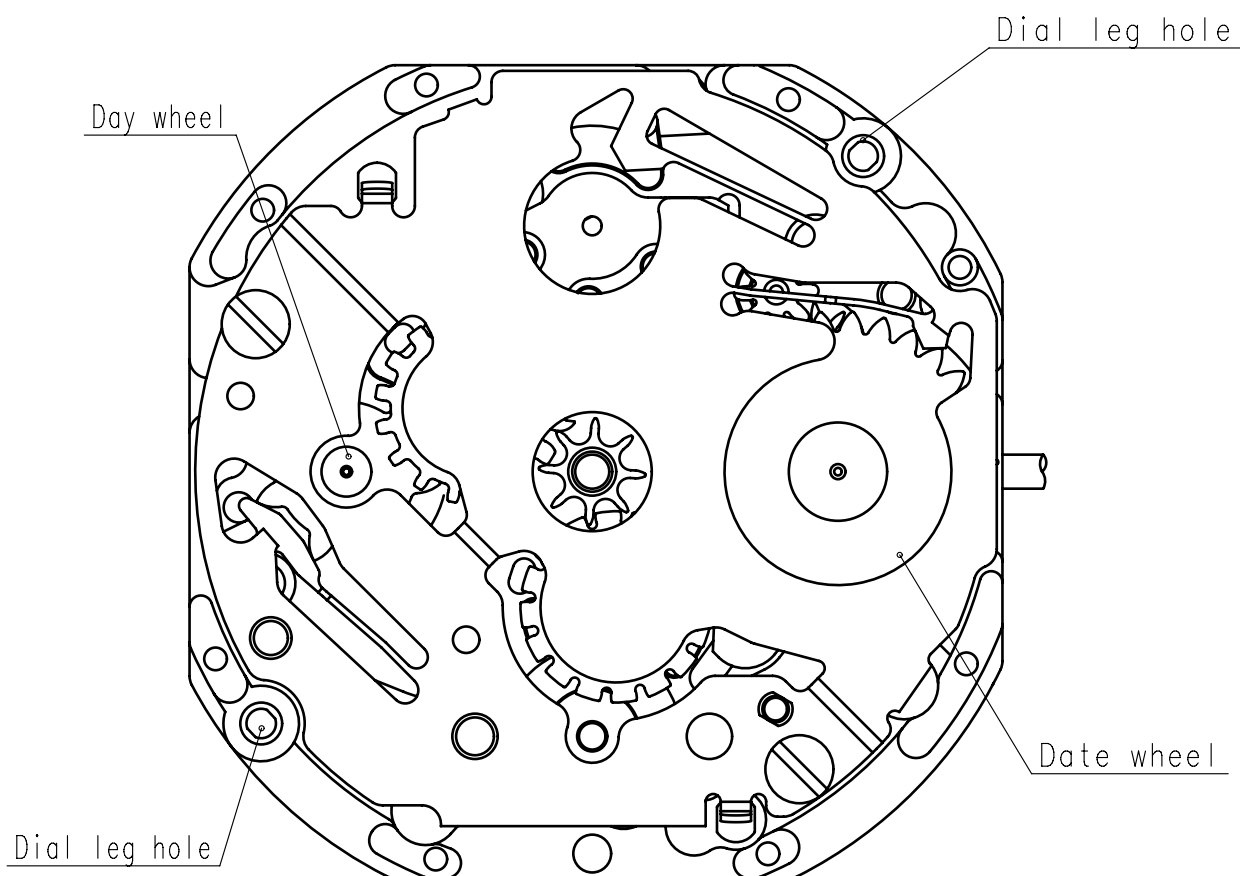
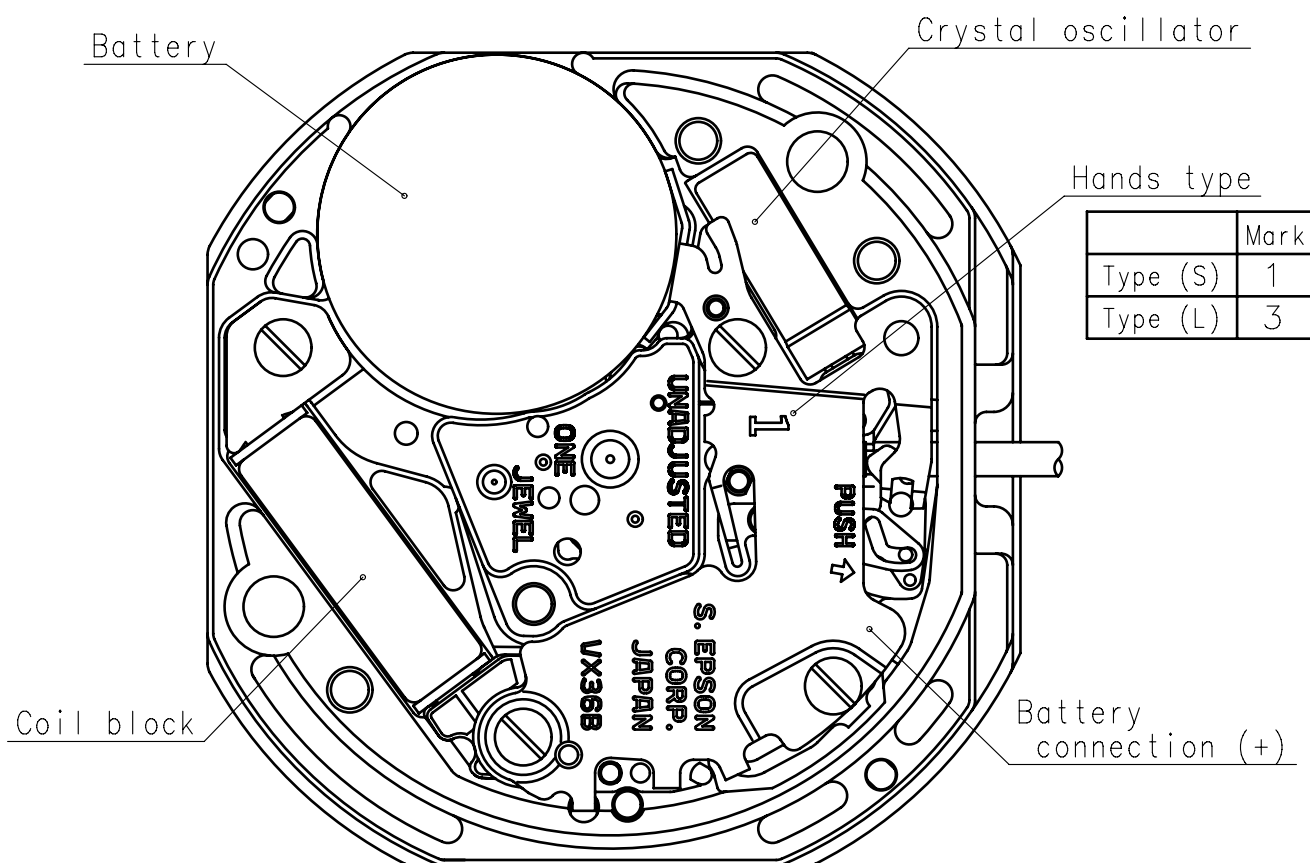
6. SEPARATED PARTS (Parts code)

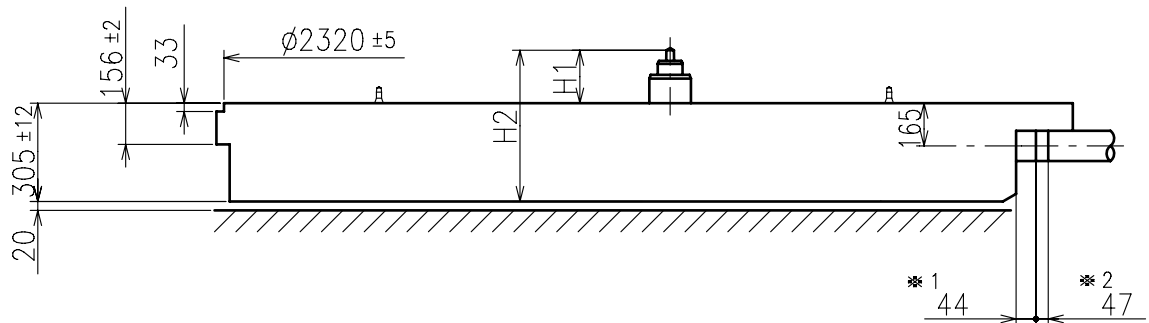
Hand setting stem	0354531 or 0354534
Battery	SR916SW

7. TEST OF ACCURACY

Equipment to be used	SEIKO quartz tester QT-99, Greiner quartz timer-C , Witschi Q-tester 4000
Duration of measurement	10 seconds
Microphone to be used	Electromagnetic detection type

All specifications are subject to change without notice.

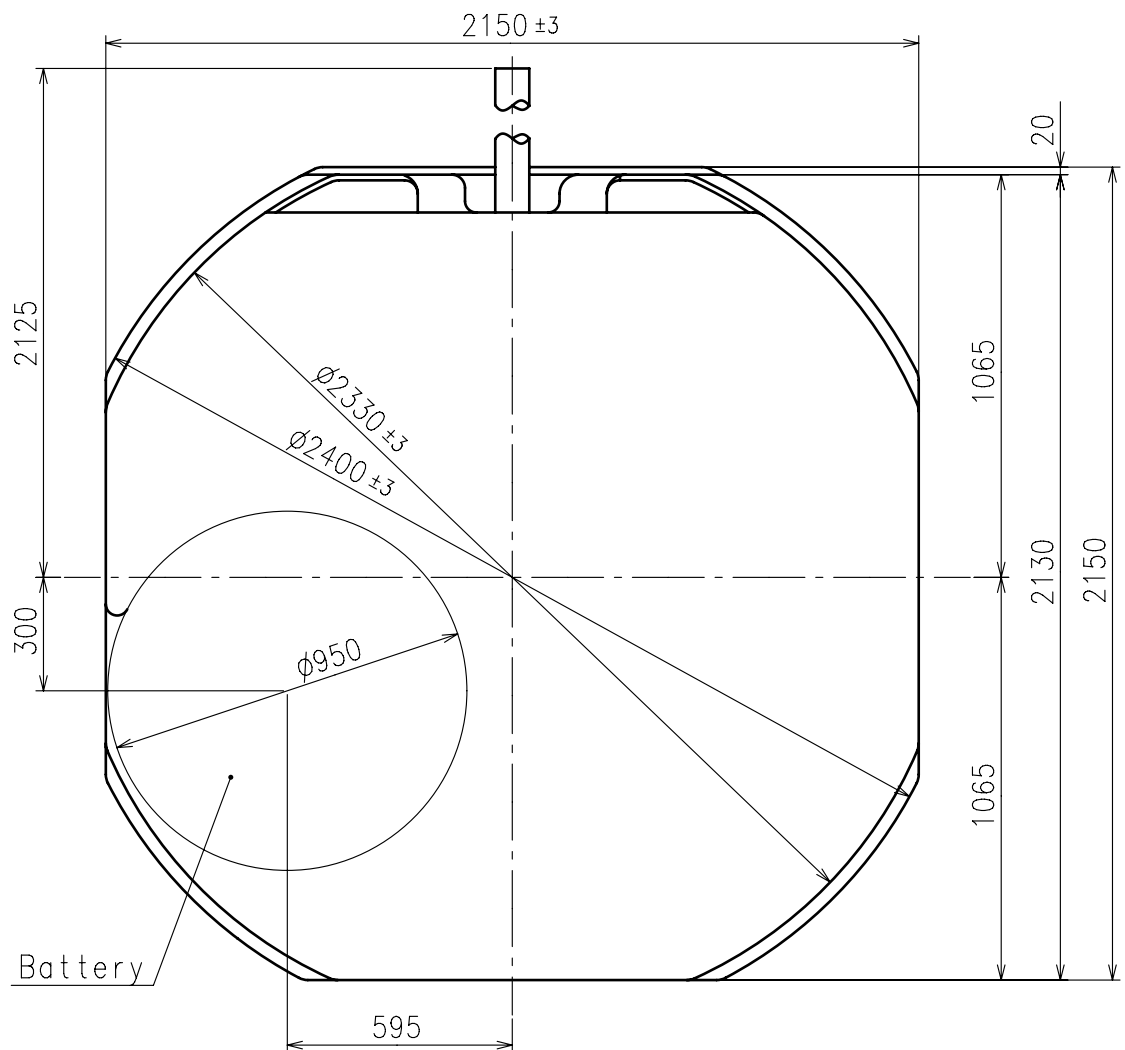




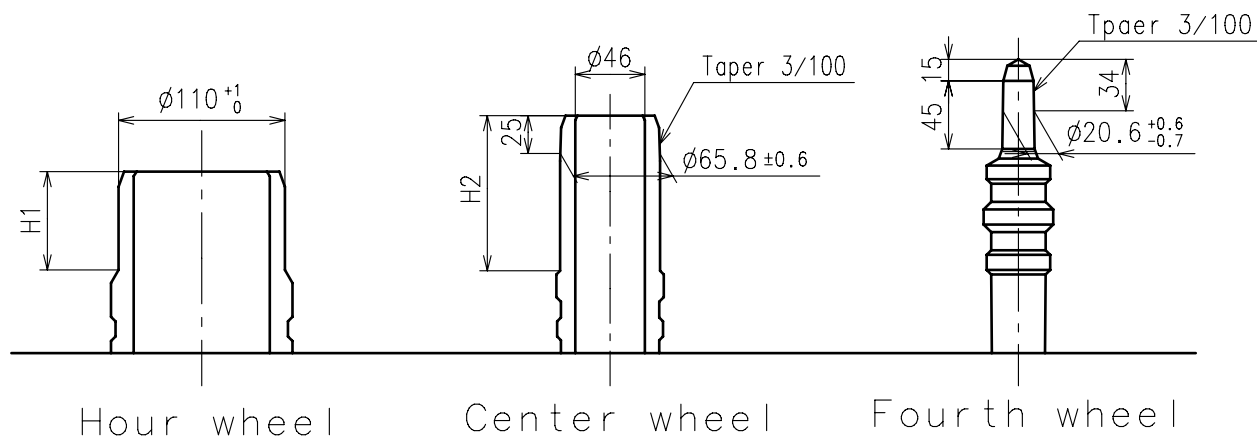
Center post		Type S (1) VX36B1	Type L (3) VX36B2
Maximum height from dial support	H1	180	220
Total height incl. movement	H2	485	525

*1:First pullout stroke

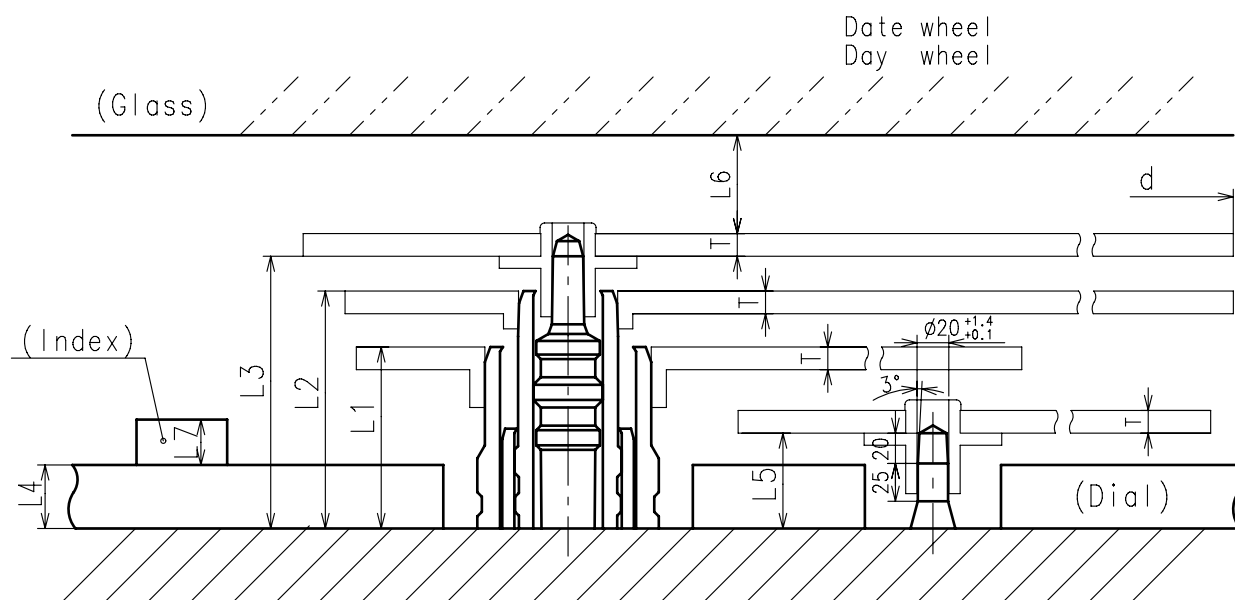
*2:Second pullout stroke



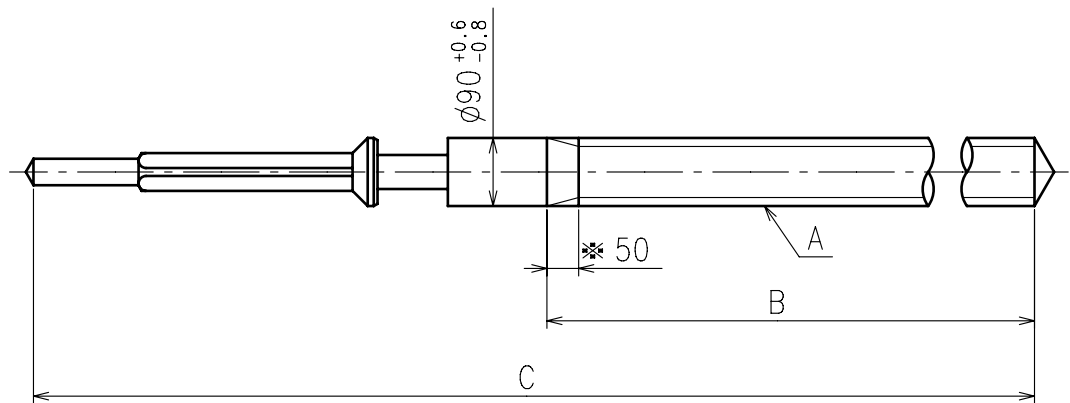
- ※ Minute hand unbalance $\leq 0.64\mu \text{ N} \cdot \text{m}$ ($65\mu \text{ g} \cdot \text{m}$)
- ※ Second hand unbalance $\leq 0.06\mu \text{ N} \cdot \text{m}$ ($6\mu \text{ g} \cdot \text{m}$)



	Parts No.			Dimension	
	Hour wheel	Center wheel	Fourth wheel	H1	H2
Type S ⁽¹⁾ VX36B1	0271538	0221537	0241537	65	103
Type L ⁽³⁾ VX36B2	0271579	0221592	0241563	65	141



	L1	L2	L3	L4	L5	L6	L7	T	d
Type S ⁽¹⁾ VX36B1	120	157	180	40	63	MIN: 50	MAX: 30	15	MAX: $\phi 2500$
Type L ⁽³⁾ VX36B2	156	195	220	70	99	MIN: 50	MAX: 30	15	MAX: $\phi 2500$

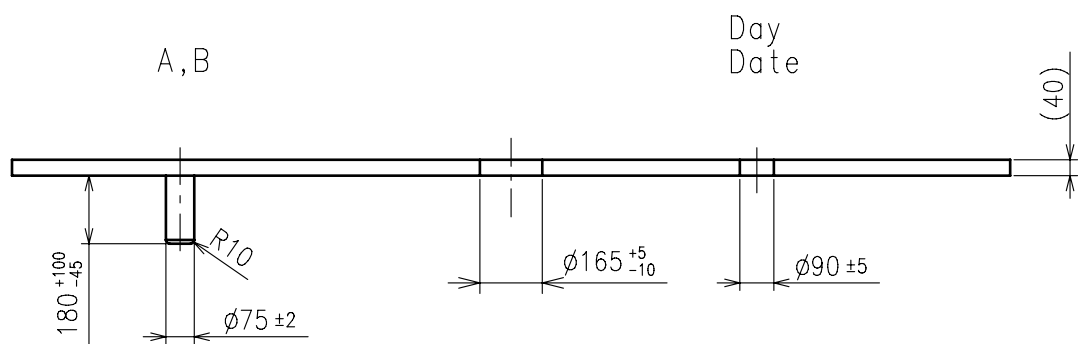
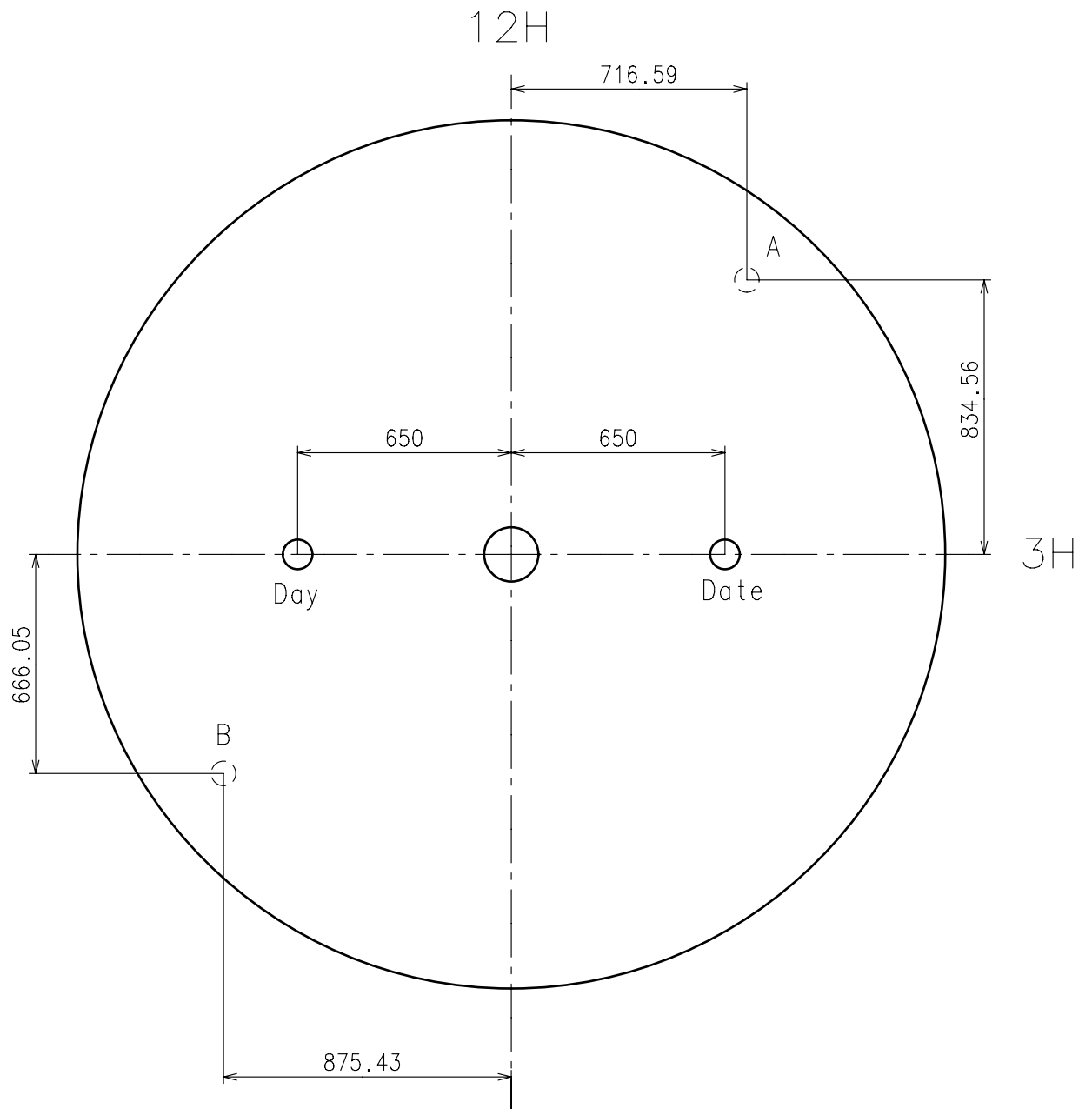


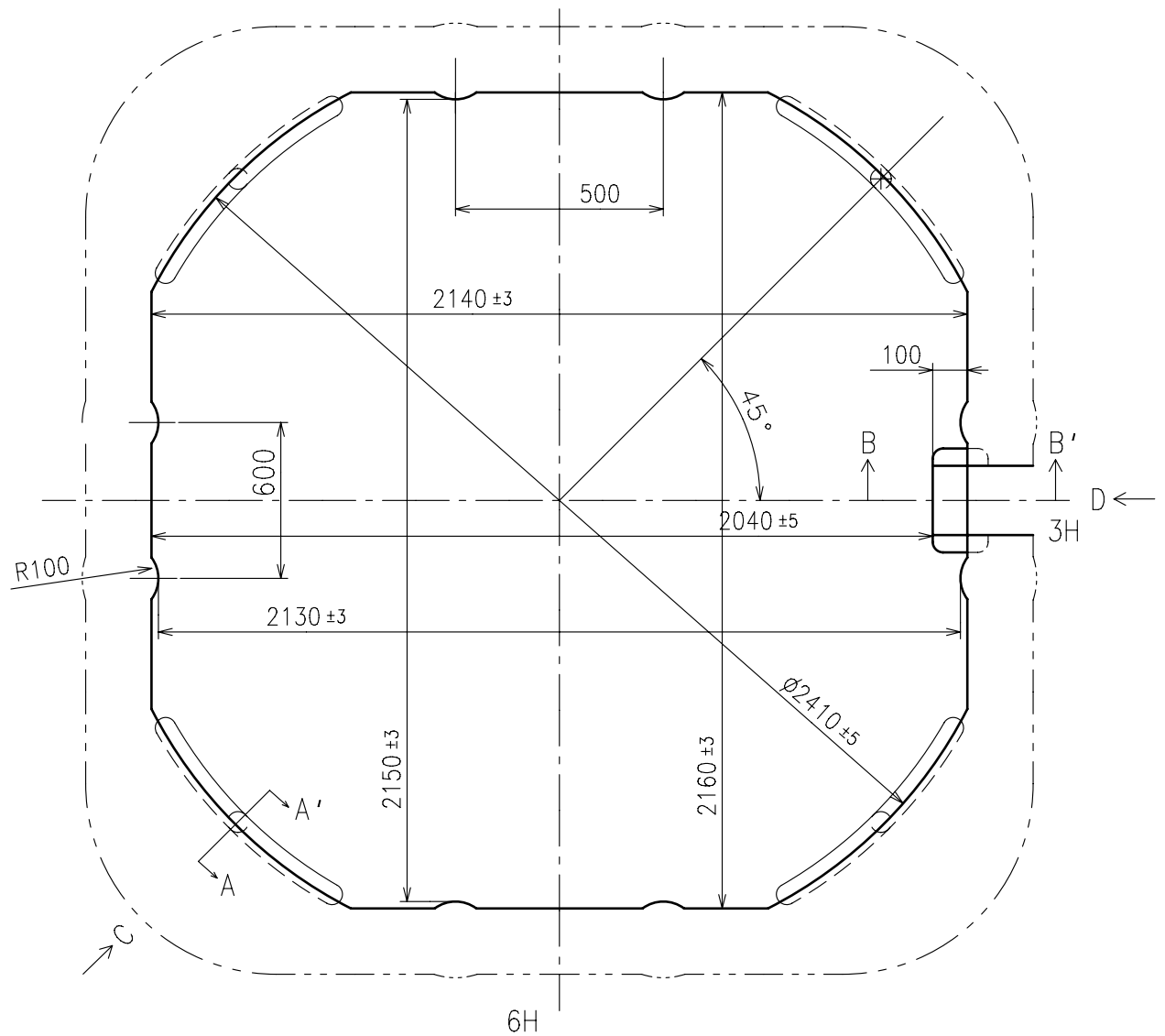
※ Not threaded

	Part No.	A	B	C
Standard Type 1	0354531	$\phi 90$ P22.5	1225	1904
Type 2	0354534	$\phi 90$ P22.5	1500	3055

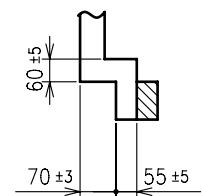
Material : Steel

Hardness : Vickers 600 ± 50

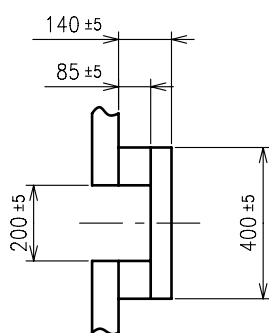




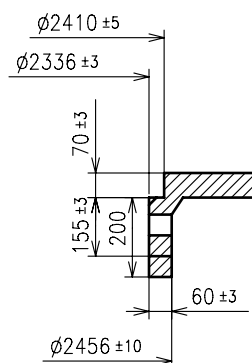
B-B' section



D view



A-A' section



C view

