

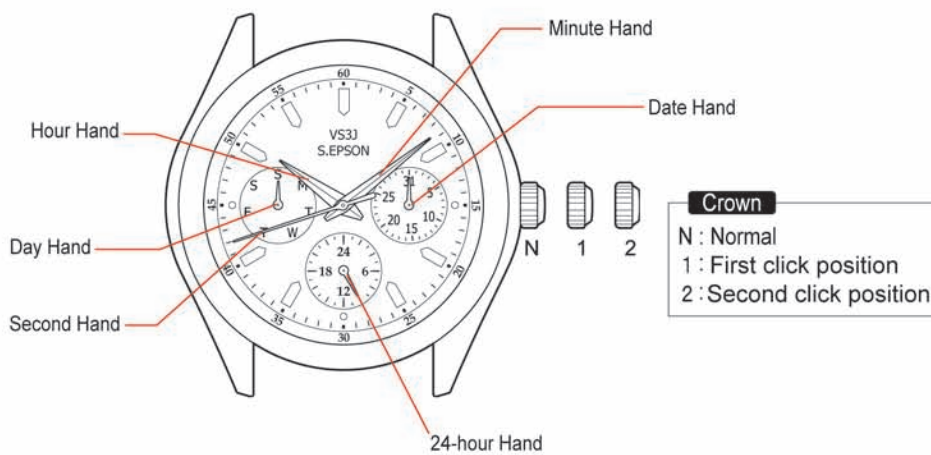
CAL.VS3J

3 Hands 3 Eyes

1/6 Instructions

Features

- ◆ Hour, Minute and Second Hands
- ◆ Day, Date and 24H indicators



Movement size	10 1/2'''
Outside Diameter	Ø25.00mm X 21.30mm (3H-9H) X 24.00mm (12H-6H)
Casing Diameter	Ø24.00mm X 19.30mm (3H-9H) X 23.30mm (12H-6H)
Height	3.47mm (Including secondary battery)

- ◆ Timing of day changes
 - The date hand moves to the next between 11:00p.m. and 12:00a.m.
 - The day hand moves to the next between 2:00a.m. and 4:00a.m.



S.EPSON Products

JAPAN TECHNOLOGY & QUALITY

www.timemodule.com

How to charge and start the watch:

◆ To charge the watch

- When you start the watch or when the energy in the rechargeable battery is reduced to an extremely low level, charge it sufficiently by exposing the watch to light.

◆ Quick-start function

- When the watch is exposed to sunlight or strong artificial light (of more than 1,000 lux.), it will start operating immediately with second hand moving at 2-second intervals.
- Expose the watch to sunlight or strong artificial light.
 - * When the watch has stopped operating, second hand will start moving at 2-second intervals.
- Keep the watch exposed to the light until second hand moves at 1-second intervals.
- When the watch is charged after it has completely stopped, set the date and time before wearing the watch.
 - * See "GUIDELINE OF CHARGING TIME" on page 3.

◆ NOTE

- When the quick-start function is activated by exposing the watch to light, second hand starts moving at 2-second intervals immediately, but the energy stored in the rechargeable battery is not sufficient. If the watch is turned away from the light, it may stop operating.
- It is not necessary to charge the watch fully. It is important, however, to charge the watch sufficiently, especially in case of initial charge.

◆ CAUTION

Caution for charging

- When charging the watch, do not place it too close to a photoflash light, spotlight, incandescent light or other light sources as the watch temperature will become extremely high, causing damage to the parts inside the watch.
- When exposing the watch to sunlight to charge it, do not leave it on the dashboard of a car, etc. for a long time, as the watch temperature becomes extremely high.
- While charging the watch, make sure the watch temperature does not exceed 50°C.

**S.EPSON Products**

JAPAN TECHNOLOGY & QUALITY

www.timemodule.com

GUIDELINE OF CHARGING TIME

(Cal. VS3J) Dial transparency rate is 50%

Illumination (lux)	Light source	Environment	Time required (approx.)		
			A	B ☆	C
500	60-watt incandescent light	Distance of 60 cm (2 ft.)	250 hours	15 hours	60 minutes
700	Fluorescent light	Office Overhead	175 hours	11 hours	50 minutes
1,000	30-watt fluorescent light	Distance of 70 cm (2 ft. 4 in.)	120 hours	6 hours	30 minutes
3,000	30-watt fluorescent light	Distance of 20 cm (8 in.)	40 hours	2 hours	10 minutes
5,000	30-watt fluorescent light	Distance of 12 cm (5 in.)	22 hours	80 minutes	6 minutes
10,000	30-watt fluorescent light	Distance of 3 cm (1 in.)	10 hours	30 minutes	3 minutes
10,000	Sun	Cloudy weather	10 hours	30 minutes	3 minutes
100,000	Sun	Fair weather	3 hours	8 minutes	1 minute

A: for full charge

B: for 1-second intervals

C: to maintain 1-day usage

☆The values in this column represent the charging times required until second hand moves constantly at 1-second intervals after the watch starts operating with second hand moving at 2-second intervals.

Even if the watch is not charged for the time specified in the column, Second hand may temporarily move at 1-second intervals. But, it will soon resume moving at 2-second intervals, and therefore, charge the watch for more than the specified period.

The above table provides only general guideline.

When the watch is fully charged, it will keep operating for approximately 6 months.

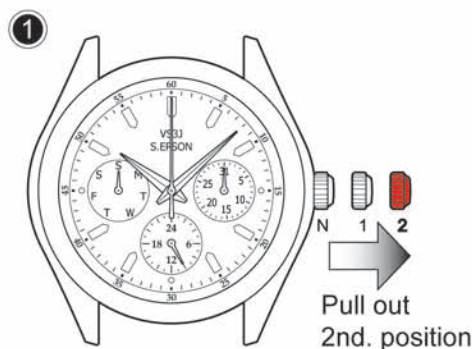


S.EPSON Products

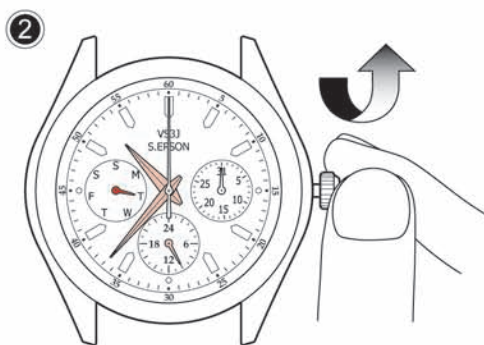
JAPAN TECHNOLOGY & QUALITY

www.timemodule.com

How to Set Time and Day of the Week:



- Pull crown out to the 2nd click position when the second hand is at the 12 o'clock position.

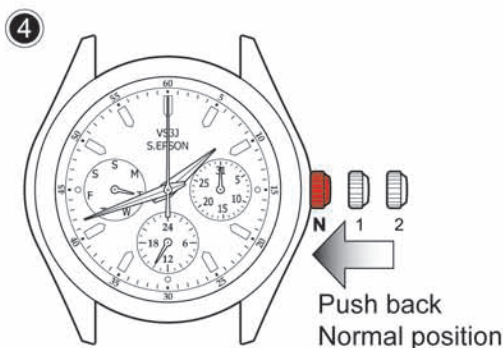


- Turn the crown clockwise to advance the hour and minute hands until day hand is set to the desired day of the week.

Note: The day hand will not move back by turning the crown counterclockwise.



- Turn to set the time taking AM or PM into consideration



- Push crown back to normal position. See the second hand begins to run.

◆ Advance Setting Technique

- To advance the day hand quickly, turn back the hour and the minute hands 4 to 5 hours beyond the point of the day changes (between 11:00p.m. and 4:00 a.m.), and then advance them again until the day hand is set to the next.

Note: The day hand will not move back by turning the crown counterclockwise.

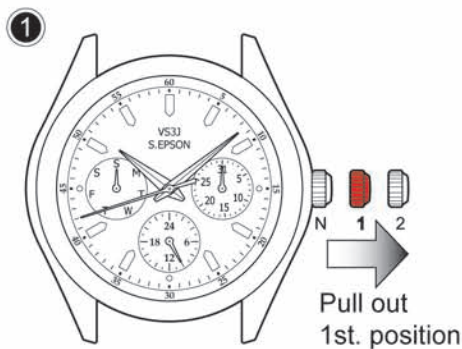
- The 24-hour hand moves correspondingly with the hour hand.
- When setting the hour hand, check that AM/PM is correctly set.
- When setting the minute hand, advance it 4 to 5 minutes ahead of the desired time and then turn it back to the exact time.

CAL.VS3J

3 Hands 3 Eyes

5/6 Instructions

How to Set Date:

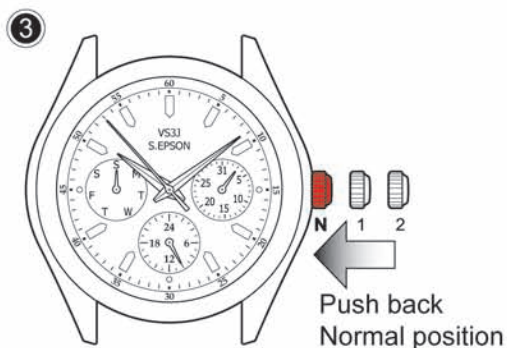


- Pull crown out to the 1st click position.



- Turn the crown clockwise to set date hand.

Note: The date hand will not move back by turning the crown counterclockwise.



- Push crown back to normal position.

◆ Advance Setting Technique

- Do not set the date hand between 9:00p.m. and 1:00a.m. Otherwise, it may not turn properly.
- While setting the date hand, check that it moves properly in one-day increments.
- It is necessary to adjust the date on the first day after a 30-day month and February.



S.EPSON Products

JAPAN TECHNOLOGY & QUALITY

www.timemodule.com

NOTE

◆ Energy depletion forewarning function

- When the energy stored in the rechargeable battery is reduced to an extremely low level, second hand starts moving at 2-second intervals instead of the normal 1-second intervals.
- In that case, recharge the watch as soon as possible by exposing it to light. Otherwise, the watch may stop operating in about 3 days.

◆ To prevent the energy depletion

- Wear the watch so that it is not covered by your clothes.
- When the watch is not in use, leave it in a bright place as long as possible.
 - * Make sure that the watch temperature does not exceed 50°C.

◆ Note on power supply

- This watch is provided with a rechargeable battery for exclusive use with the watch. Unlike conventional battery-powered watches, therefore, battery replacement is not necessary.
- The solar cell is a clean energy source, having no adverse effect on the natural environment.

◆ Caution

- Never insert a conventional silver oxide battery in your watch as it may explode, generate an intense heat or catch fire. The watch is so designed that even if the battery is installed the watch, the watch will not operate.

**S.EPSON Products**

JAPAN TECHNOLOGY & QUALITY

www.timemodule.com