

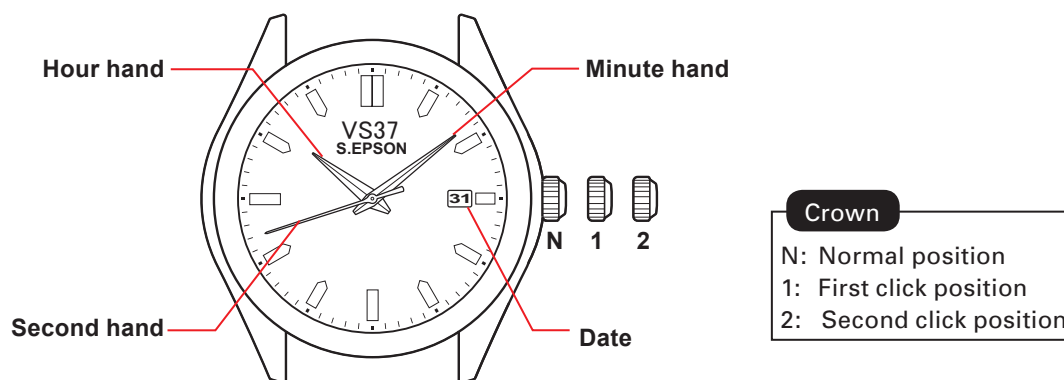
CAL.VS37

3 HANDS/DATE

1/6 Instructions

Features

- ◆ Hour, Minute and Second hands
- ◆ Date



Movement size	10 1/2"
Outside Diameter	ø25.00 mm x 21.30 mm (3H-9H) x 24.00 mm (12H-6H)
Casing Diameter	ø24.00mm x 19.30 mm (3H-9H) x 23.30 mm (12H-6H)
Height	2.57 mm (Including the secondary battery 2.98 mm)

- ◆ Timing of date change

The date moves forward by one day between 11:00 PM and 12:00 midnight.



S.EPSON Products

JAPAN TECHNOLOGY & QUALITY

www.timemodule.com

How to charge and start the watch

◆ Charging the watch

- When you start the watch or when the energy remaining in the rechargeable battery is very low, charge it sufficiently by exposing the watch to light.

◆ Quick-start function

- When the watch is exposed to sunlight or strong artificial light (of more than 1,000 lux.), it will start operating immediately with the second hand moving at 2-second intervals.
- Expose the watch to sunlight or strong artificial light.
 - * When the watch has stopped operating, the second hand will start moving at 2-second intervals.
- Keep the watch exposed to light until the second hand moves at 1-second intervals.
- When the watch is charged after it has completely stopped, set the date and time before wearing the watch.
 - * See "Guidelines for charging time" on page 3.

◆ Notes

- When the quick-start function is activated after the watch is exposed to light, the second hand starts moving at 2-second intervals immediately, but the energy stored in the rechargeable battery is not yet sufficient. If the watch is turned away from the light, it may stop operating.
- It is not necessary to charge the watch fully. It is important, however, to charge the watch sufficiently, especially the case of initial charging.

◆ Caution

Care in charging

- Make sure the watch temperature does not exceed 50°C while charging, to avoid damage to the parts inside.
- When charging the watch, do not place it too close to a hot light source such as a photoflash light, spotlight or incandescent light as this can greatly raise the watch temperature.
- When charging the watch by sunlight, do not leave it exposed to the sun for a long time, on the dashboard of a car, etc., as this can greatly raise the watch temperature.

**S.EPSON Products**

JAPAN TECHNOLOGY & QUALITY

www.timemodule.com

Guidelines for charging time

(Dial transparency is 30%)

			Time required (approx.)		
Illumination (lux)	Source of light	Environment	A	B☆	C
700	Fluorescent lamp	Inside office	197 hours	37 hours	54 minutes
3,000		30w 20 cm	43 hours	8 hours	12 minutes
10,000	Sunlight	Cloudy	13 hours	3 hours	4 minutes
100,000		Fine weather	6 hours	36 minutes	1 minute

<Reference> The illuminance of 1,000 Lx is 70cm under from 30W fluorescent lamp.

Condition A: Time required for full charge

Condition B: Time required for steady operation

Condition C: Time required for 1 day's charge

☆ The values in this column represent the charging times required until the second hand moves constantly at 1-second intervals after the watch starts operating with the second hand moving at 2-second intervals.

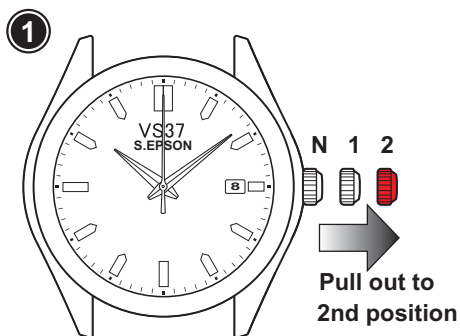
Even if the watch is not charged for the time specified in the column, the second hand may temporarily move at 1-second intervals. But it will soon resume moving at 2-second intervals; therefore, charge the watch for more than the specified period.

The above table provides only general guidelines.

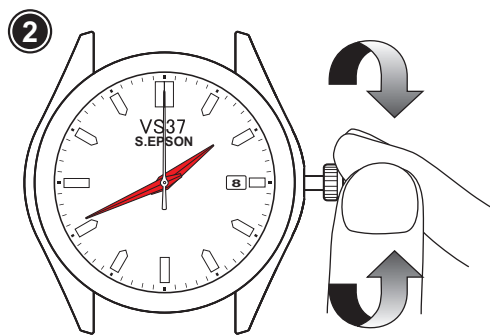
When the watch is fully charged, it will continue to operate for about 6 months.



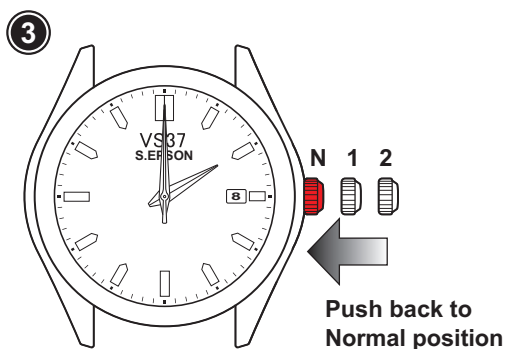
How to set time



- Pull the crown out to the 2nd click position when the second hand is at the 12 o'clock position.



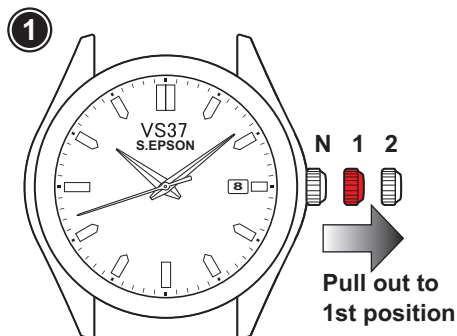
- Turn the crown to set the time.
Take AM/PM into consideration when setting the hour and minute hands to the desired time.



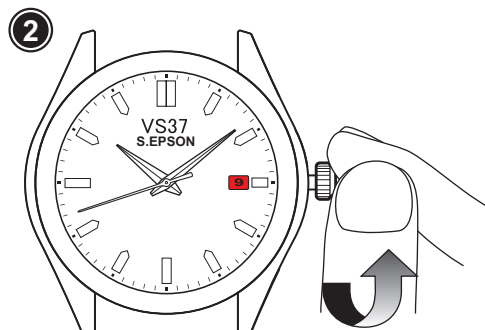
- Push the crown back to the normal position.
Confirm that the second hand begins to run.

Note: When setting the minute hand, advance it 4 to 5 minutes ahead of the desired time and then turn it back to the exact minute(s.)

How to set date

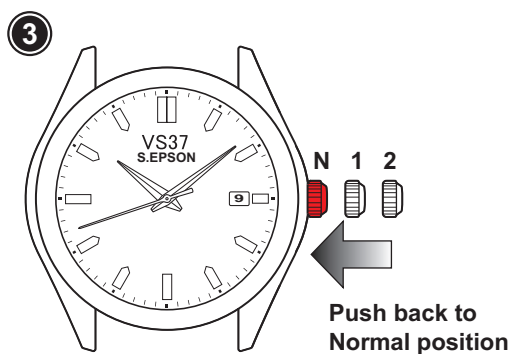


- Pull the crown out to the 1st click position.



- Turn the crown to set the date.

Note: Please do not set the date between 9:00 PM and 1:00 AM.



- Push the crown back to the normal position.

Note

◆ Energy depletion forewarning function

- When the energy stored in the rechargeable battery is reduced to an extremely low level, the second hand starts moving at 2-second intervals instead of the normal 1-second intervals.
- When this happens, recharge the watch as soon as possible by exposing it to light. Otherwise, the watch may stop operating within about 1 day.

◆ To prevent the energy depletion

- Avoid covering the watch face with your clothing while wearing it.
- When the watch is not in use, leave it in a brightly lit place for as long as possible.
 - * Make sure that the watch temperature does not exceed 50°C.

◆ Notes on power supply

- This watch is provided with a rechargeable battery for exclusive use with the watch. Unlike with conventional battery-powered watches, therefore, battery replacement is not necessary.
- The solar cell is a clean energy source and has no adverse effect on the natural environment.

◆ Caution

- Never insert a conventional silver oxide battery in your watch as it may explode, generate intense heat or catch fire. The watch is designed not to operate if such a battery is installed in it.

**S.EPSON Products**

JAPAN TECHNOLOGY & QUALITY

www.timemodule.com