

Cal. NH37A

ϕ 27.40 mm
 (ϕ 29.36 mm with Dial Holding Spacer)

H 5.32 mm

Item	Version No.
Specification	Version 1
Appearance - 1	Version 1
Appearance - 2	Version 1
Casing	Version 1
Hand Fitting	Version 1
Hand Setting Stem	Version 1
Dial	Version 1
Assembly Plan	Version 1
Hands	Version 1



MOVEMENT SPECIFICATION

CAL.NH37A 12 Ligne Mechanical Movement Three Hands with Date, Small 24 hours indicator

1. MOVEMENT DIMENSIONS

- Outside diameter ϕ 27.40 mm
- Casing diameter ϕ 29.36 mm (with dial holding spacer)
- Total height 5.32 mm

2. FUNCTIONS

- Winding mechanism
 - Manual winding
 - Automatic winding with ball bearing
 - Both winding with one way clutch
- Additional function
 - Date display with quick date correction, second hand reset
- Jewels
 - 24 jewels
- Accuracy
 - 25 ~ +35 seconds per day ($23^{\circ}\pm 2^{\circ}\text{C}$)
- Shock resistance
 - Shock-absorber device for balance staff
- Vibration frequency
 - 6 vibrations per second (21,600 vibrations per hour)
- Duration time
 - More than 41 hours
- Regulation hands unbalance
 - Hour : Less than $1.50 \mu\text{N}\cdot\text{m}$ (150 mg·mm)
 - Minute : Less than $1.25 \mu\text{N}\cdot\text{m}$ (125 mg·mm)
 - Second : Less than $0.20 \mu\text{N}\cdot\text{m}$ (20 mg·mm)
 - Small 24H hand : Less than $0.05 \mu\text{N}\cdot\text{m}$ (5 mg·mm)
- Antimagnetic
 - DC : $\geq 4800 \text{ A / m}$

3. HANDLING AND CORRECTIONS

- 1) Crown at normal position
 - Clockwise : Manual winding
 - Counterclockwise : Free
- 2) Crown pulled out to 1st click
 - Clockwise : Free
 - Counterclockwise : Quick date correction
- 3) Crown pulled out to 2nd click
 - Time setting, second hand reset

4. DIAL FIXED METHOD

The dial is fixed by two dial leg holes of dial holding spacer

5. TEST OF ACCURACY

- Equipment to be used
 - Witschi WATCH EXPERT
- Duration of measurement
 - 20 seconds

6. FITTING FORCE FOR HANDS

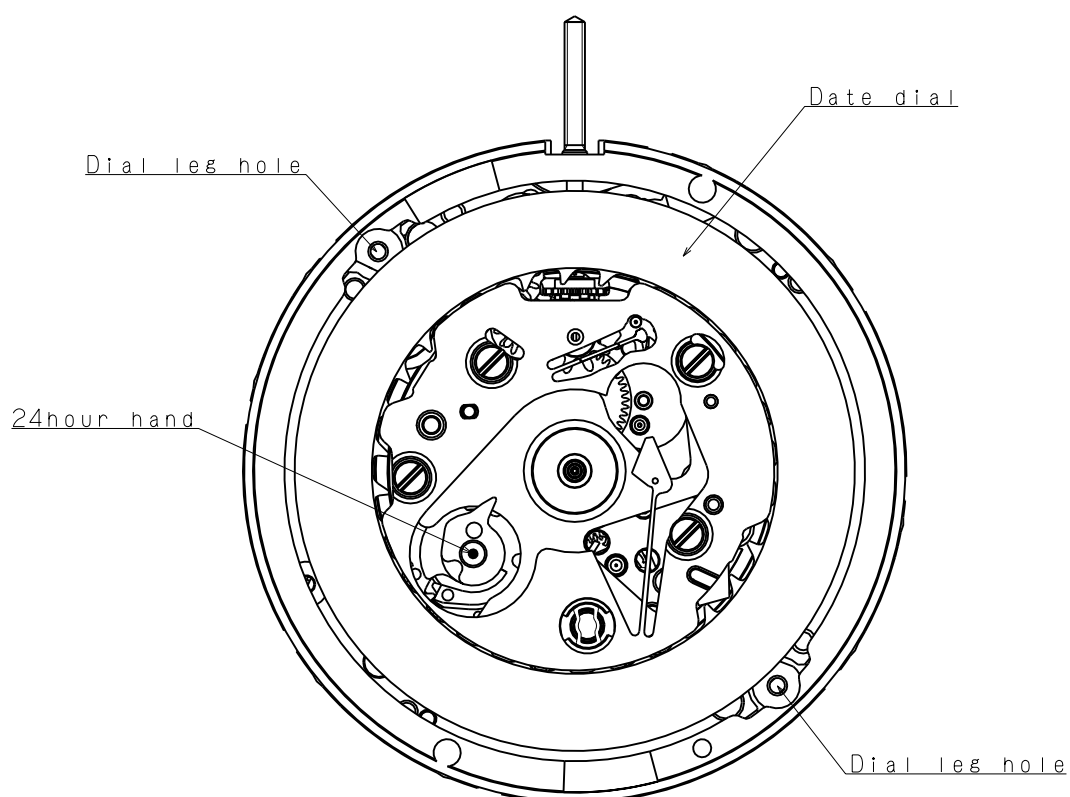
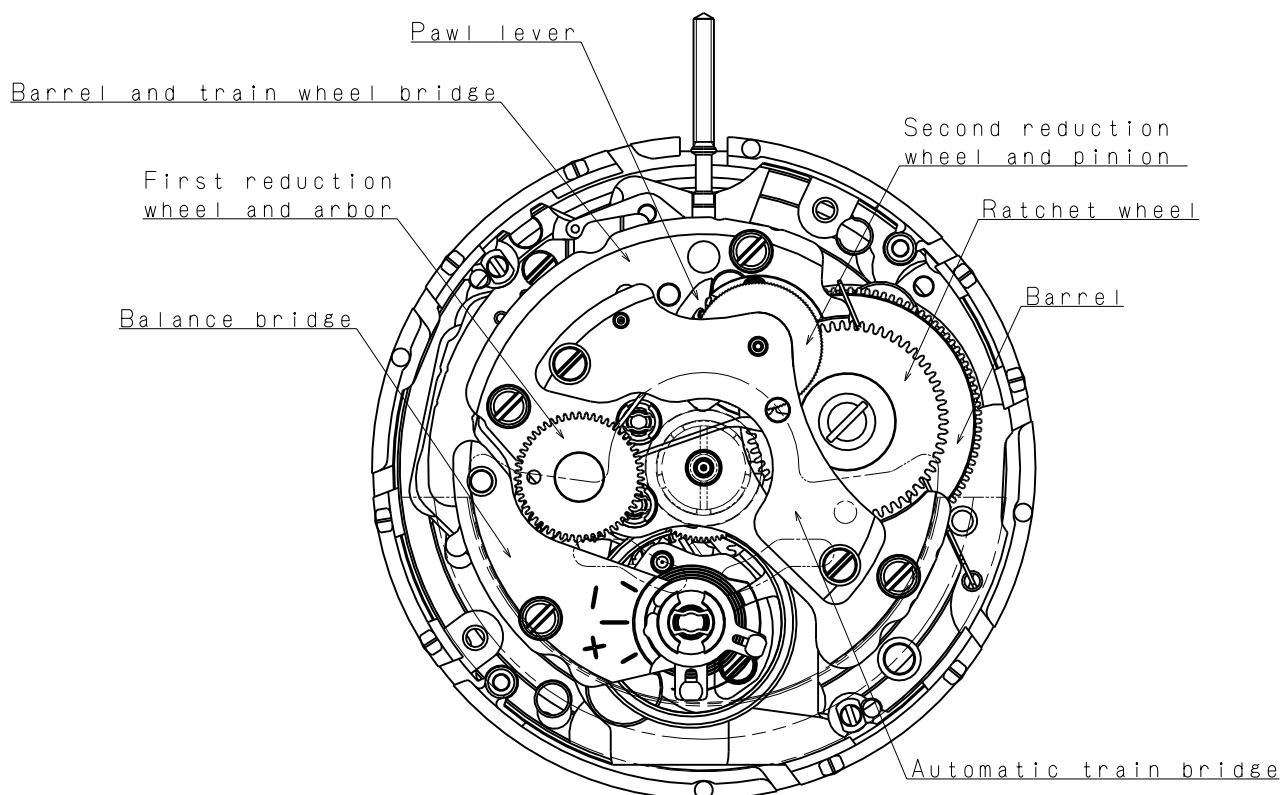
- Hour hand : Less than 50 N
- Minute hand : Less than 50 N
- Second hand : Less than 30 N
- Small 24H hand : Less than 30 N

7. CASING

The movement is fixed by dial holding spacer

- *1. Screw type case back is required
- *2. Non-corresponding with Diver's watch

*** All specifications are subject to change without notice.**



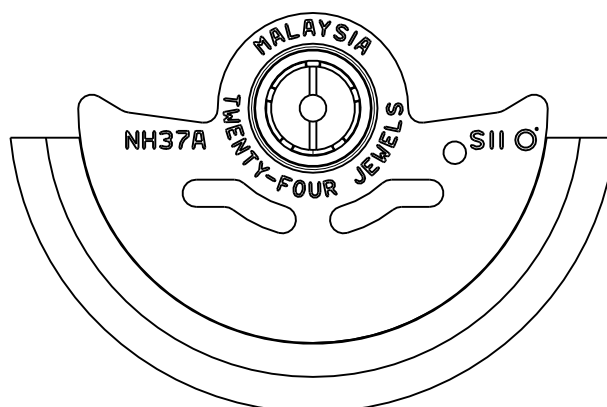
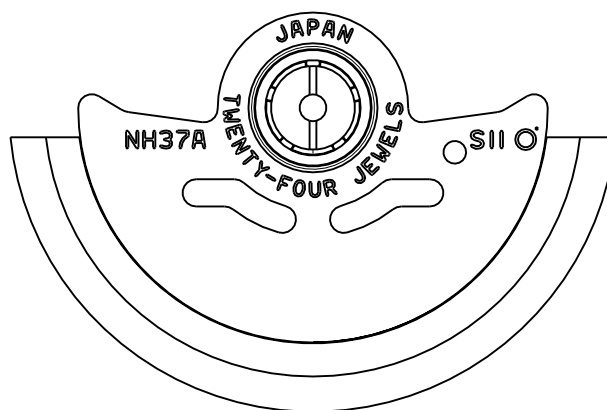
Scale : 3/1

Unit : 1=1/100mm

Version:1

Oscillating weight

Marking	Country of origin
JAPAN	JAPAN
MALAYSIA	MALAYSIA



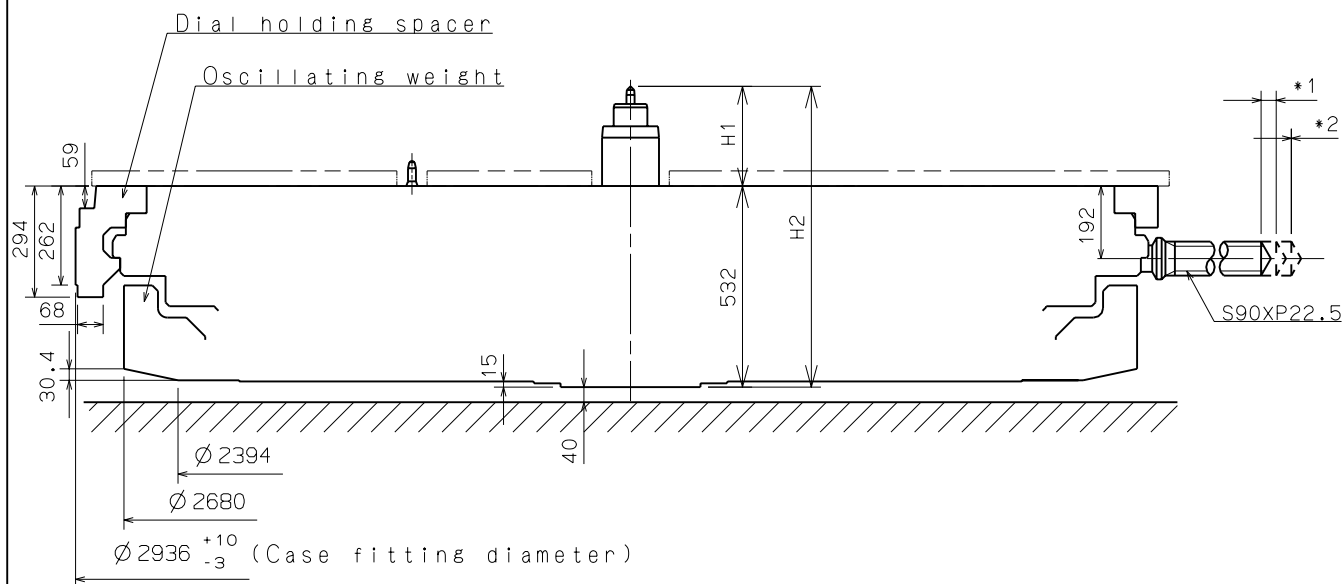
Scale : 3/1

Unit : 1=1/100mm

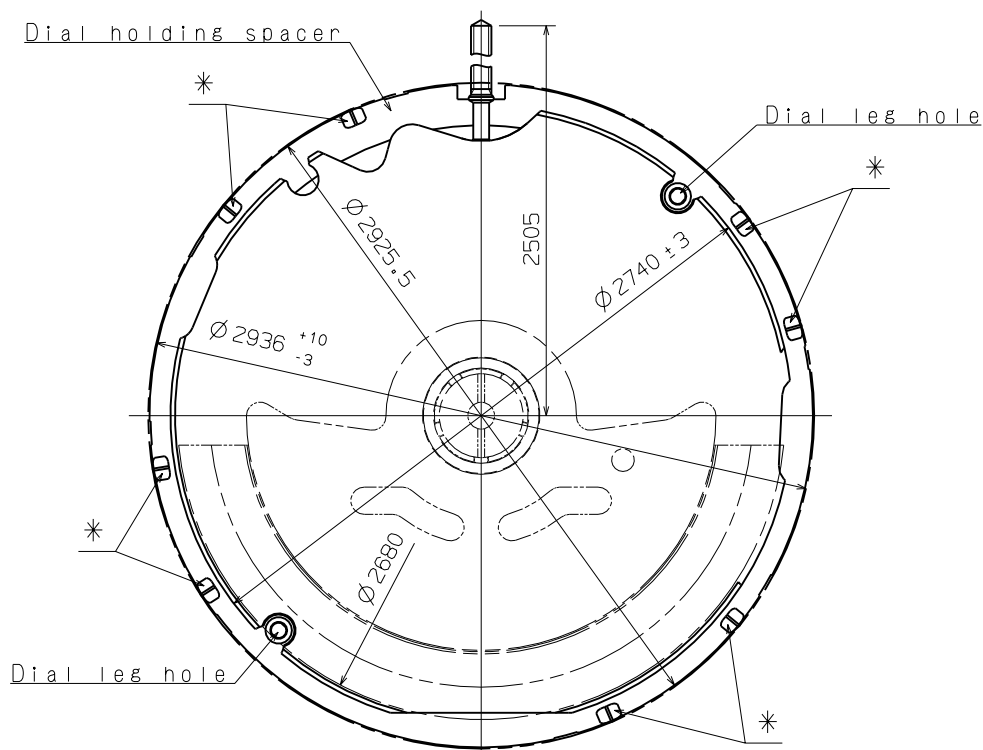
Version:1

*1. First pull out stroke 39.9

*2. Second pull out stroke 40.0



Center post		TYPE M
Maximum height from dial support surface	H1	266.7
Total height incl. movement	H2	798.7



Scale = 3/1

*Projection to fix movement to case.

Scale : 5/1 (3/1)

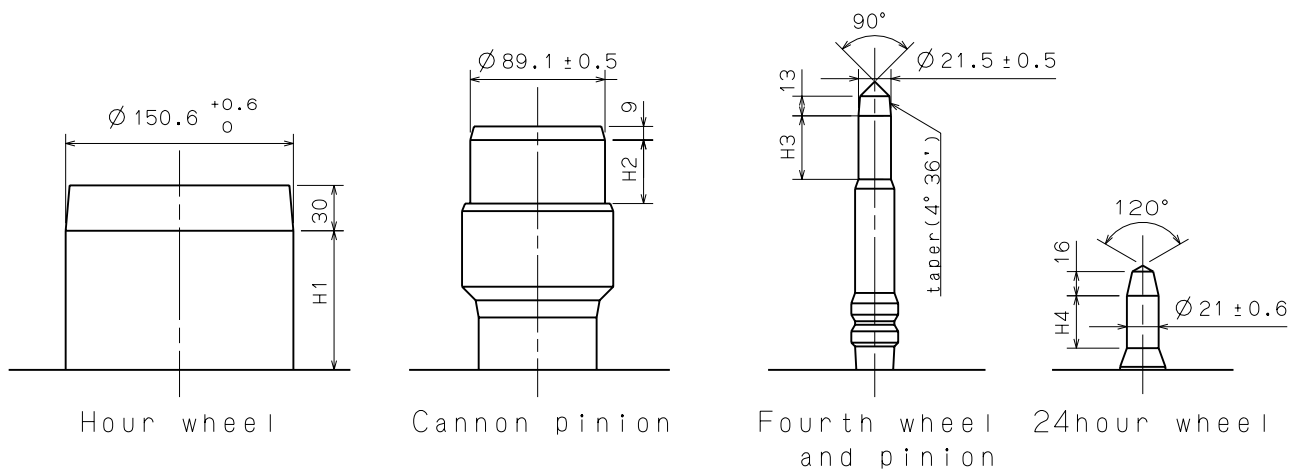
Unit : 1 = 1/100mm

Version : 1

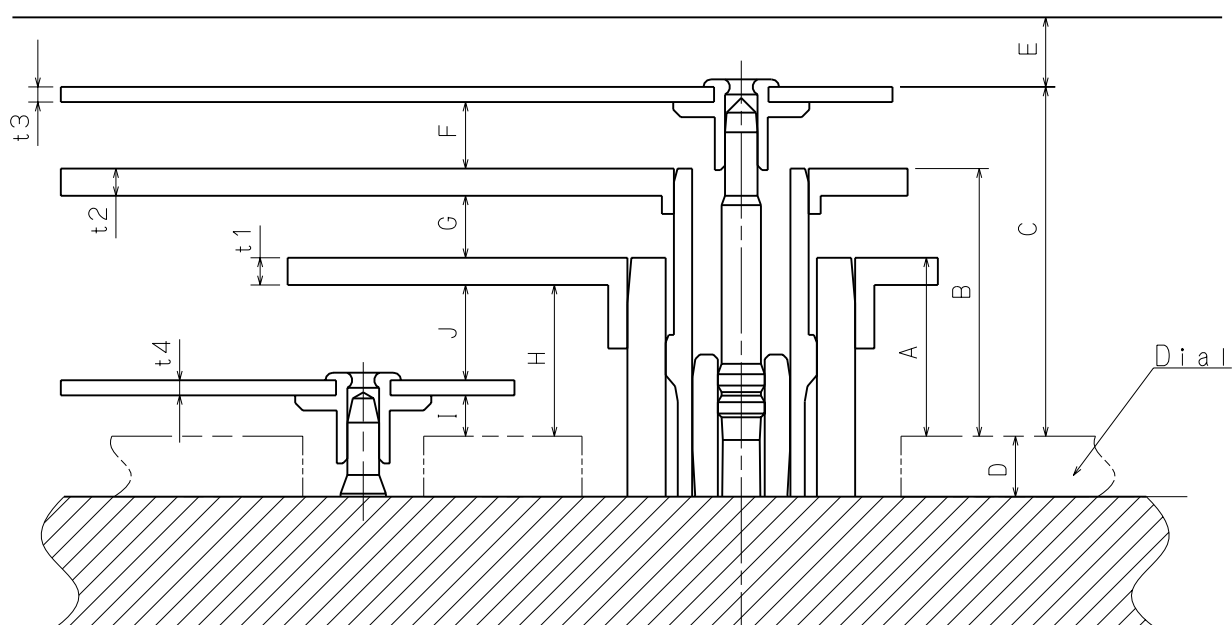
Hand fitting

Cal. NH37A

Hour hand unbalance $\leq 1.50\mu\text{N}\cdot\text{m}$ (150mg·mm)
 Minute hand unbalance $\leq 1.25\mu\text{N}\cdot\text{m}$ (125mg·mm)
 Second hand unbalance $\leq 0.20\mu\text{N}\cdot\text{m}$ (20mg·mm)
 24hour hand unbalance $\leq 0.05\mu\text{N}\cdot\text{m}$ (5mg·mm)



	Part. No.				Dimension			
	Hour wheel	Cannon pinion	Fourth wheel and pinion	24hour wheel	H1	H2	H3	H4
TYPE M	0273 184	0225 417	0144 185	0157 182	128	61	42	34.6

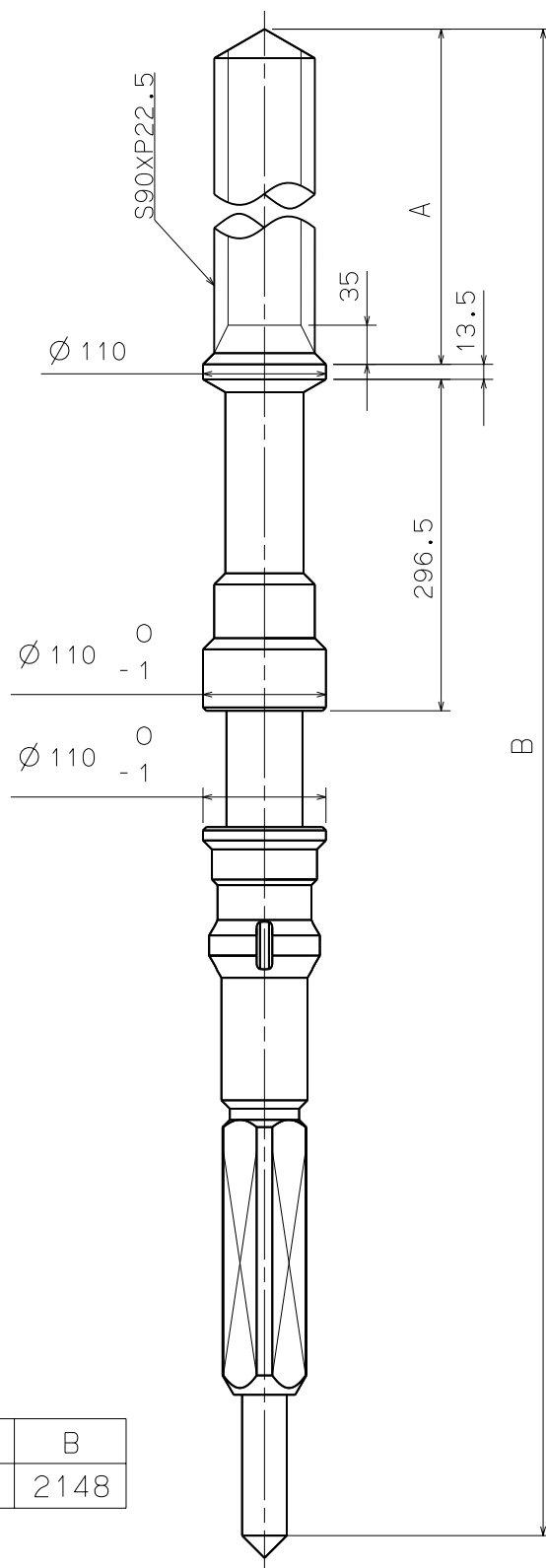


	A	B	C	D	E	F	G	H	I	J	t1	t2	t3	t4
TYPE M	118	177	231	40	45	44	41	100	27	63	18	18	10	10

Scale : 20/1

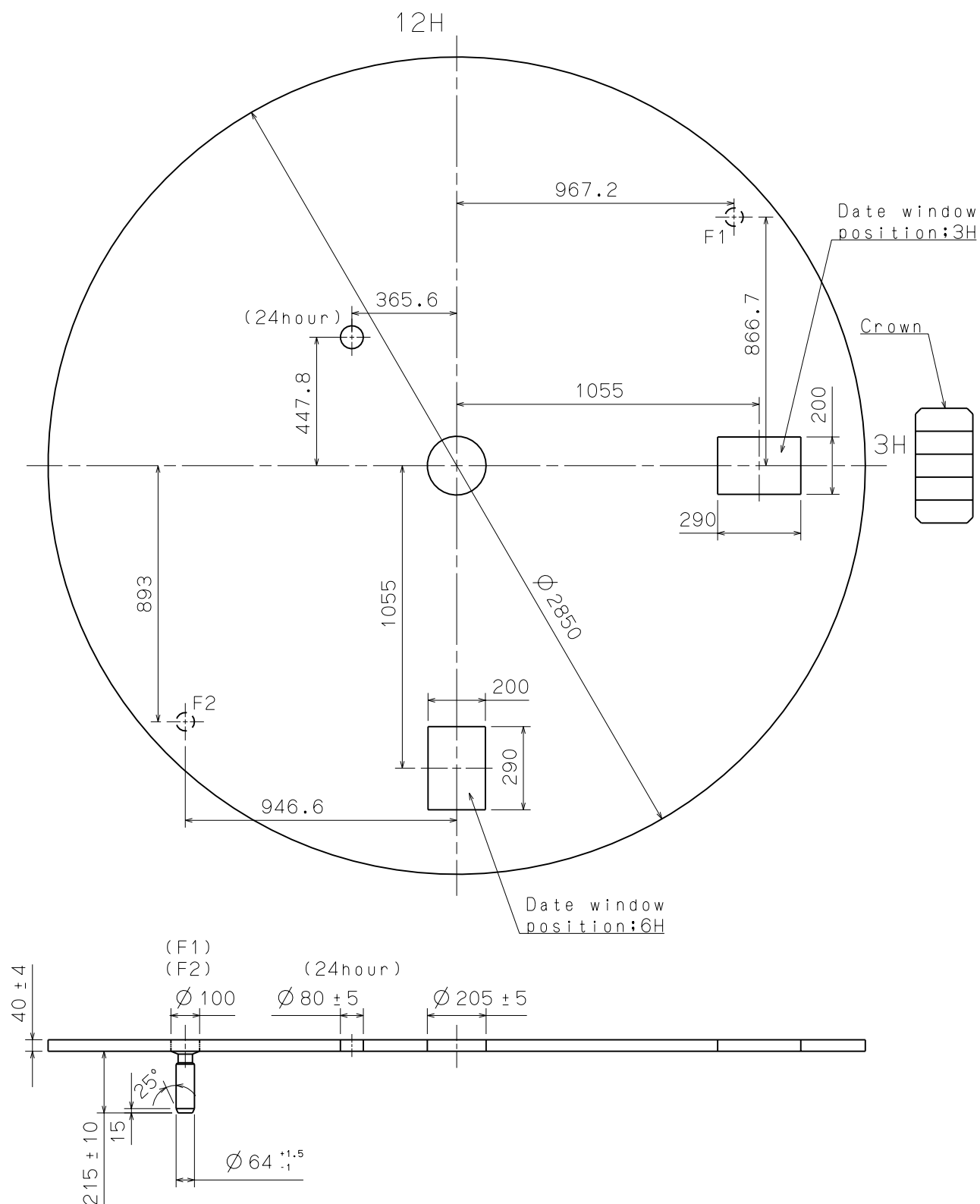
Unit : 1=1/100mm

Version:1



Scale : 15/1
Unit : 1=1/100mm

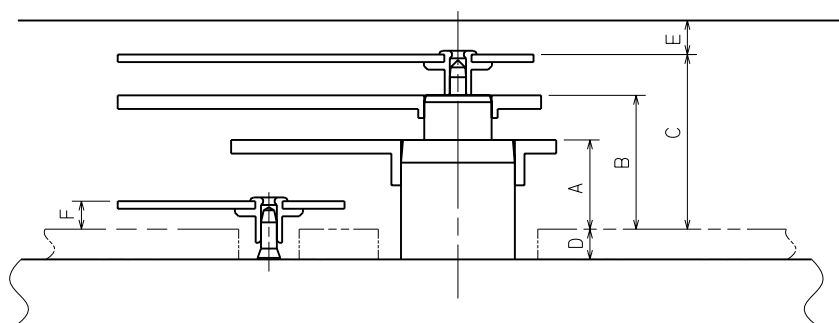
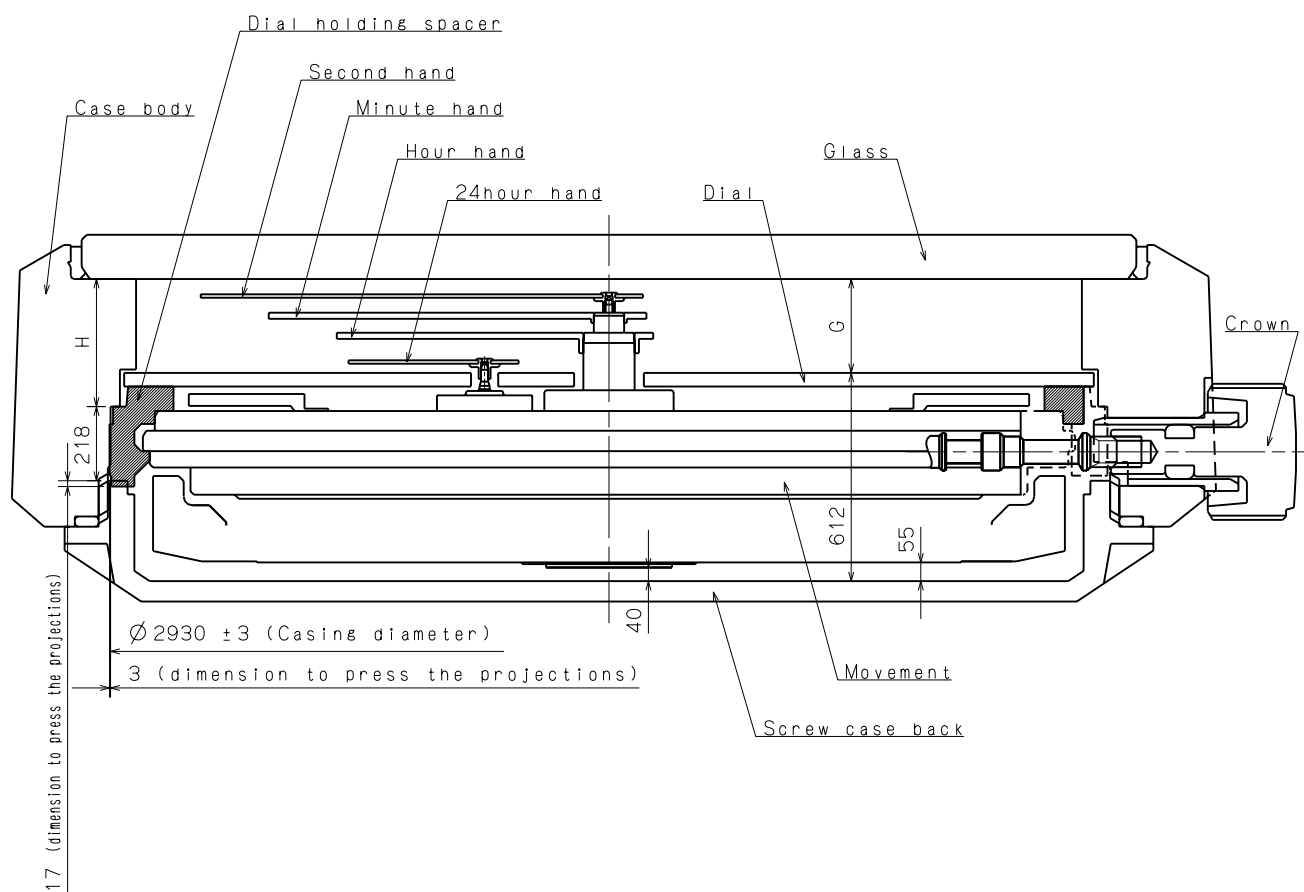
Version:1



Scale : 5/1

Unit : 1=1/100mm

Version:1

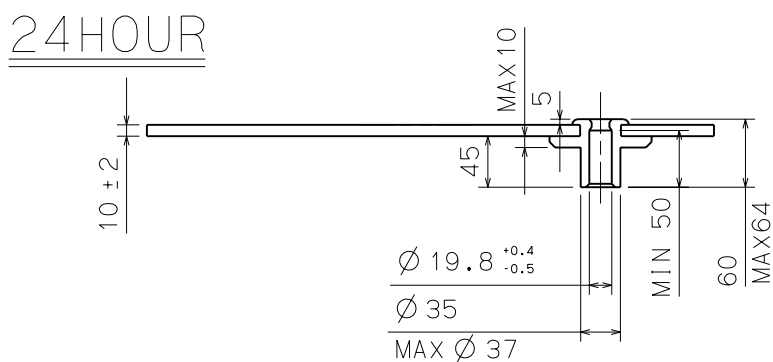
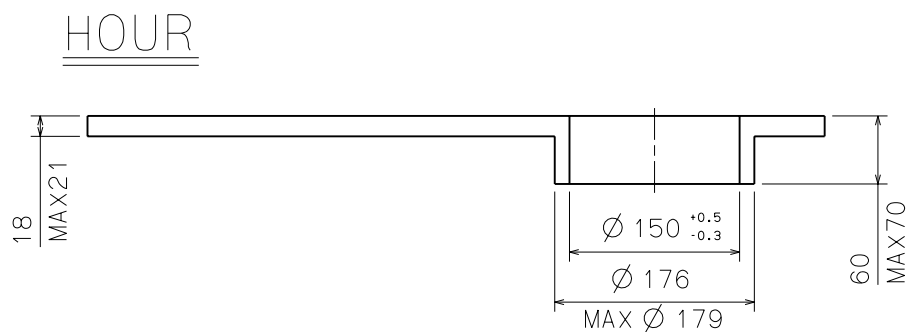
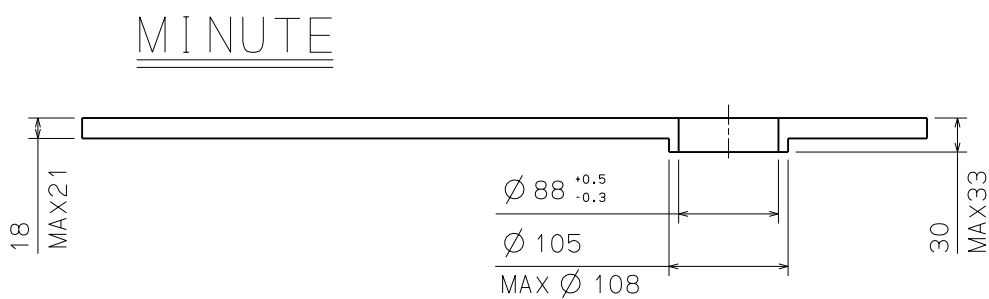
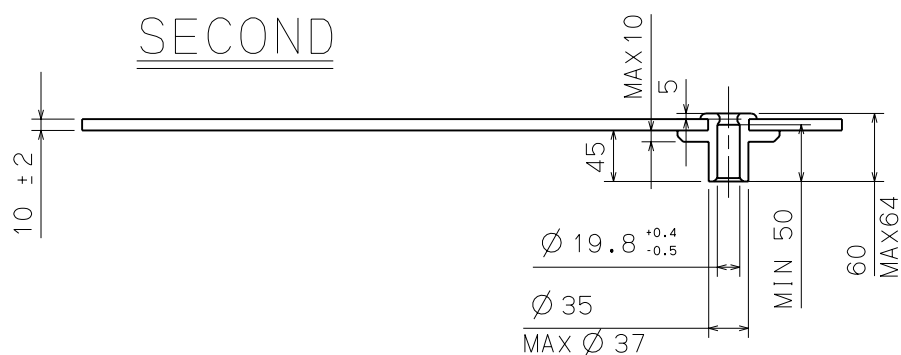


	A	B	C	D	E	F	G	H
TYPE M	118	177	231	40	45	37	276	375

Scale : -

Unit : 1=1/100mm

Version:1



Scale : -

Unit : 1=1/100mm

Version : 1