

Cal. NH36A

ϕ 27.40 mm
(ϕ 29.36 mm with Dial Holding Spacer)

H 5.32 mm

Item	Version No.
Specification	Version 1
Appearance - 1	Version 1
Appearance - 2	Version 1
Casing	Version 1
Hand Fitting	Version 1
Hand Setting Stem	Version 1
Dial	Version 1
Assembly Plan	Version 1
Hands	Version 1



MOVEMENT SPECIFICATION

CAL.NH36A 12 Ligne Mechanical Movement Three Hands with Day & Date

1. MOVEMENT DIMENSIONS

- Outside diameter ϕ 27.40 mm
- Casing diameter ϕ 29.36 mm (with dial holding spacer)
- Total height 5.32 mm

2. FUNCTIONS

- Winding mechanism
Manual winding
Automatic winding with ball bearing
Both winding with one way clutch
- Additional function
Day & date display with quick day & date correction,
second hand reset
- Jewels
24 jewels
- Accuracy
-25 ~ +35 seconds per day ($23^{\circ}\pm 2^{\circ}\text{C}$)
- Shock resistance
Shock-absorber device for balance staff
- Vibration frequency
6 vibrations per second (21,600 vibrations per hour)
- Duration time
More than 41 hours
- Regulation hands unbalance
Hour : Less than $1.50 \mu\text{N}\cdot\text{m}$ (150 mg·mm)
Minute : Less than $1.25 \mu\text{N}\cdot\text{m}$ (125 mg·mm)
Second : Less than $0.20 \mu\text{N}\cdot\text{m}$ (20 mg·mm)
DC : $\geq 4800 \text{ A / m}$
- Antimagnetic

3. HANDLING AND CORRECTIONS

- 1) Crown at normal position
Clockwise : Manual winding
Counterclockwise : Free
- 2) Crown pulled out to 1st click
Clockwise : Quick day correction
Counterclockwise : Quick date correction
- 3) Crown pulled out to 2nd click
Time setting, second hand reset

4. DIAL FIXED METHOD

The dial is fixed by two dial leg holes of dial holding spacer

5. TEST OF ACCURACY

- Equipment to be used
Witschi WATCH EXPERT
- Duration of measurement
20 seconds

6. FITTING FORCE FOR HANDS

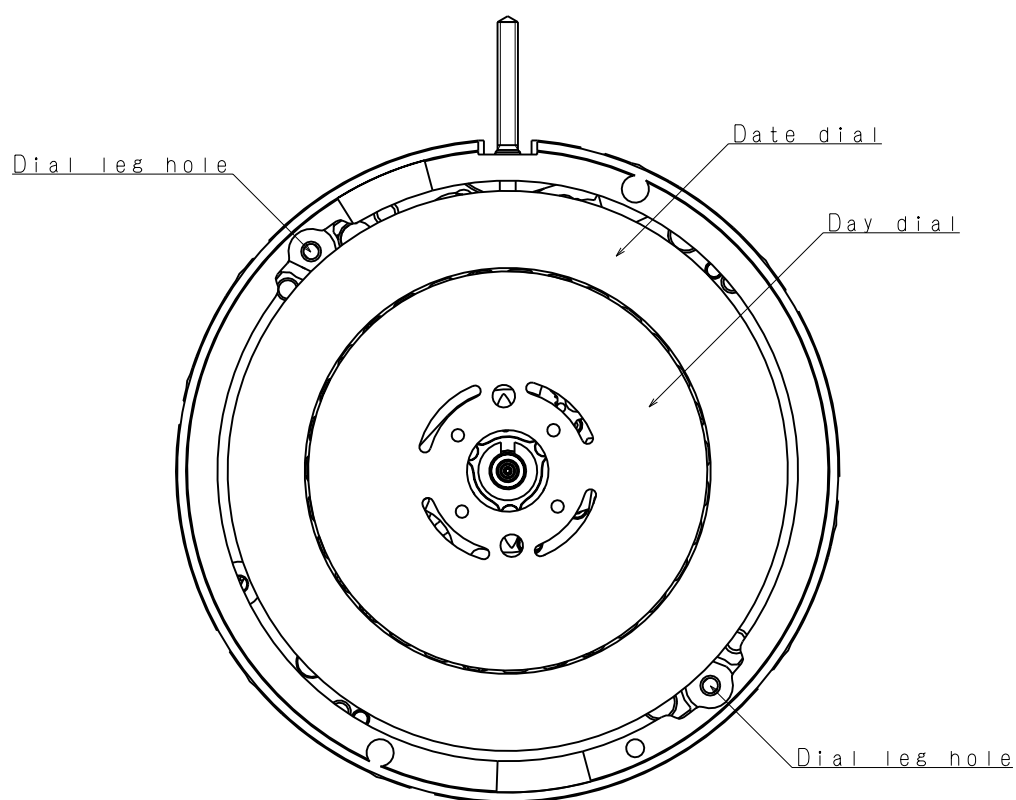
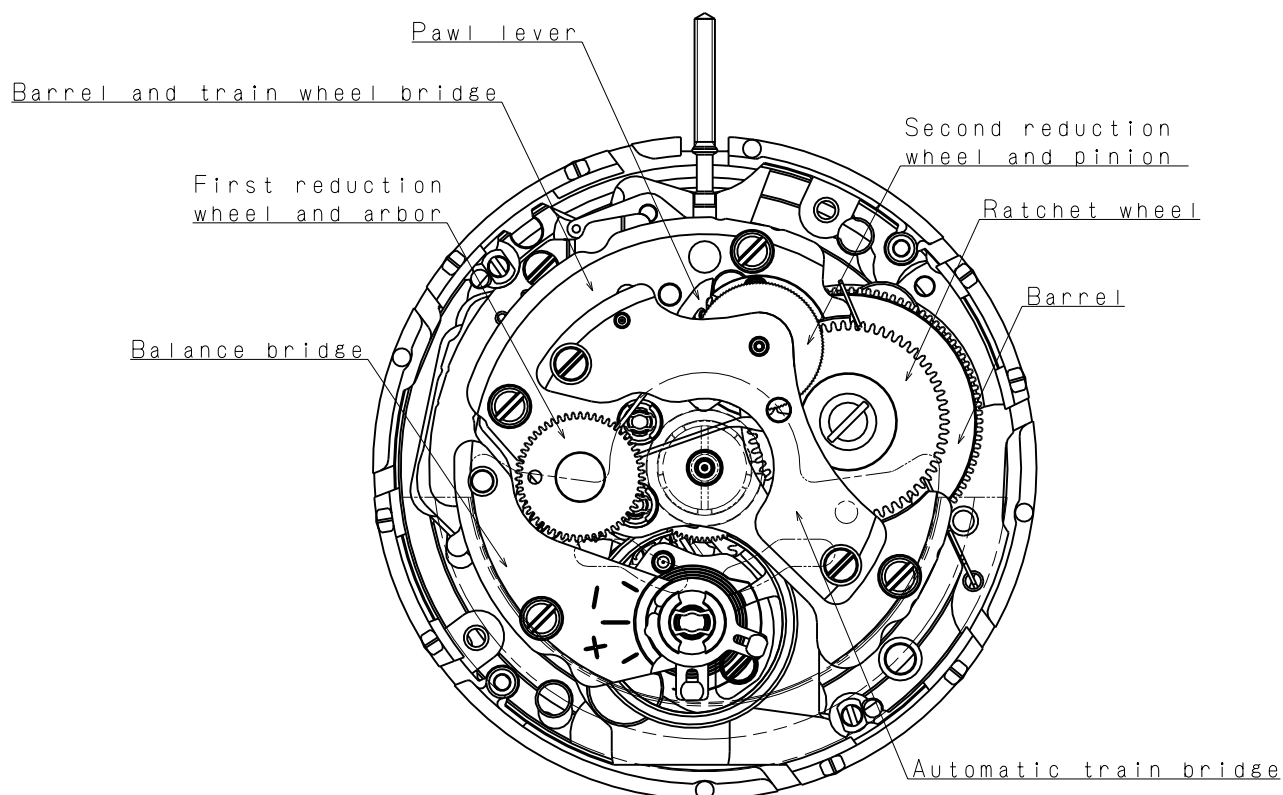
- Hour hand : Less than 50 N
- Minute hand : Less than 50 N
- Second hand : Less than 30 N

7. CASING

The movement is fixed by dial holding spacer

- *1. Screw type case back is required
- *2. Non-corresponding with Diver's watch

*** All specifications are subject to change without notice.**



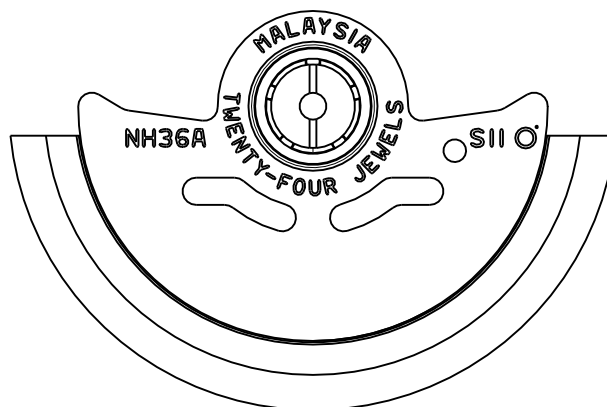
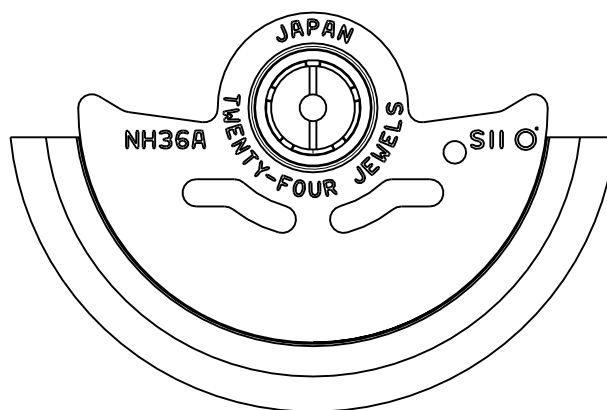
Scale : 3/1

Unit : 1=1/100mm

Version:1

Oscillating weight

Marking	Country of origin
JAPAN	JAPAN
MALAYSIA	MALAYSIA



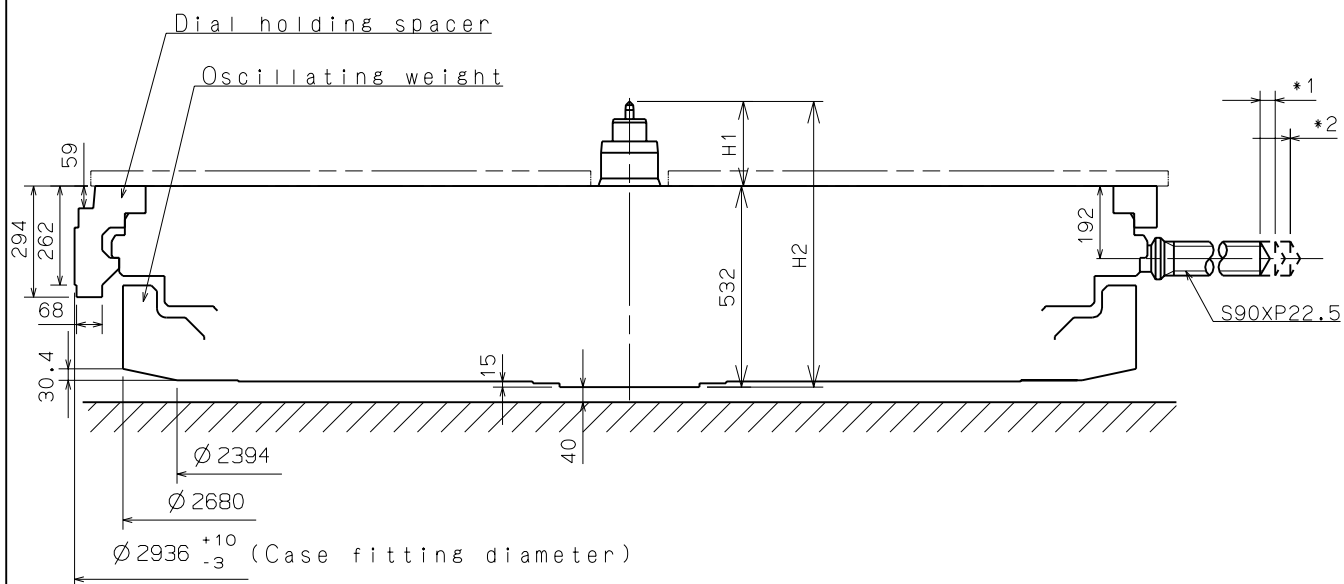
Scale : 3/1

Unit : 1=1/100mm

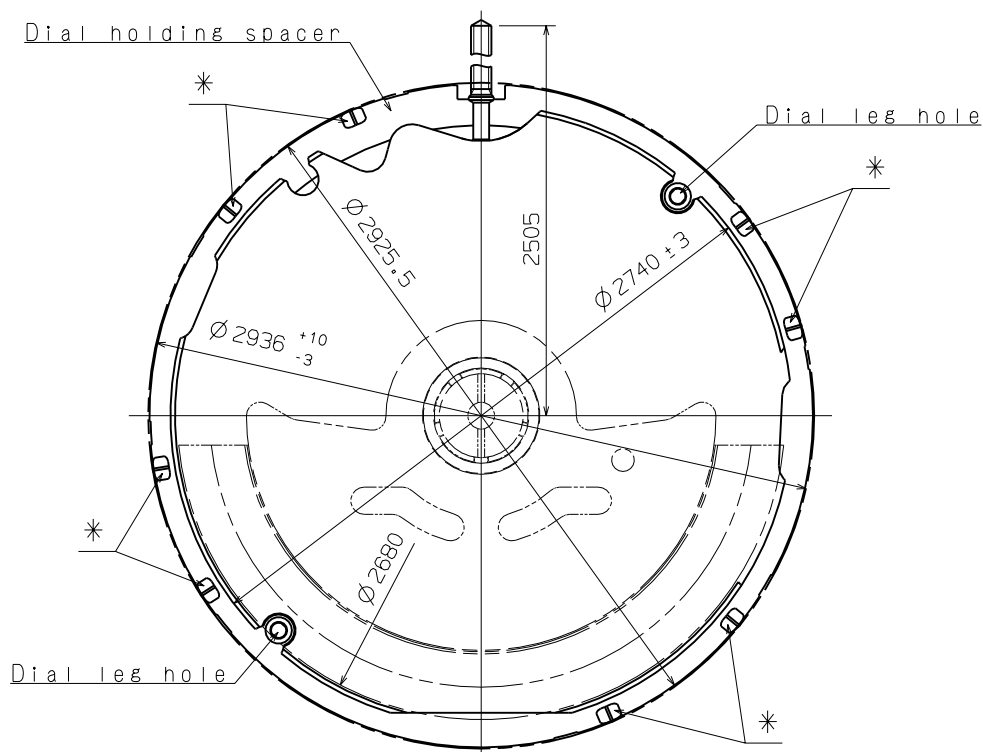
Version:1

*1. First pull out stroke 39.9

*2. Second pull out stroke 40.0



Center post		TYPE M	TYPE L
Maximum height from dial support surface	H1	226.7	266.7
Total height incl. movement	H2	758.7	798.7



*Projection to fix movement to case.

Scale : 5/1 (3/1)

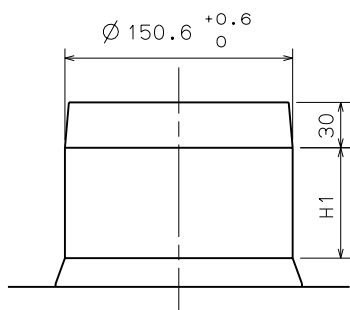
Unit : 1=1/100mm

Version: 1

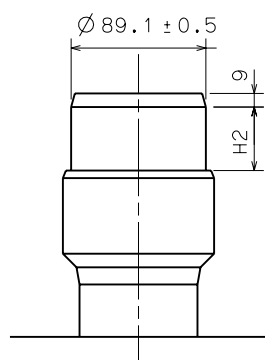
Hand fitting

Cal. NH36A

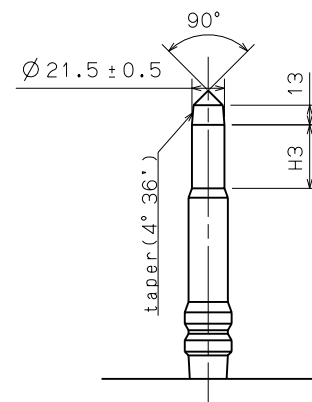
Hour hand unbalance $\leq 1.50\mu\text{N}\cdot\text{m}$ (150mg·mm)
 Minute hand unbalance $\leq 1.25\mu\text{N}\cdot\text{m}$ (125mg·mm)
 Second hand unbalance $\leq 0.20\mu\text{N}\cdot\text{m}$ (20mg·mm)



Hour wheel

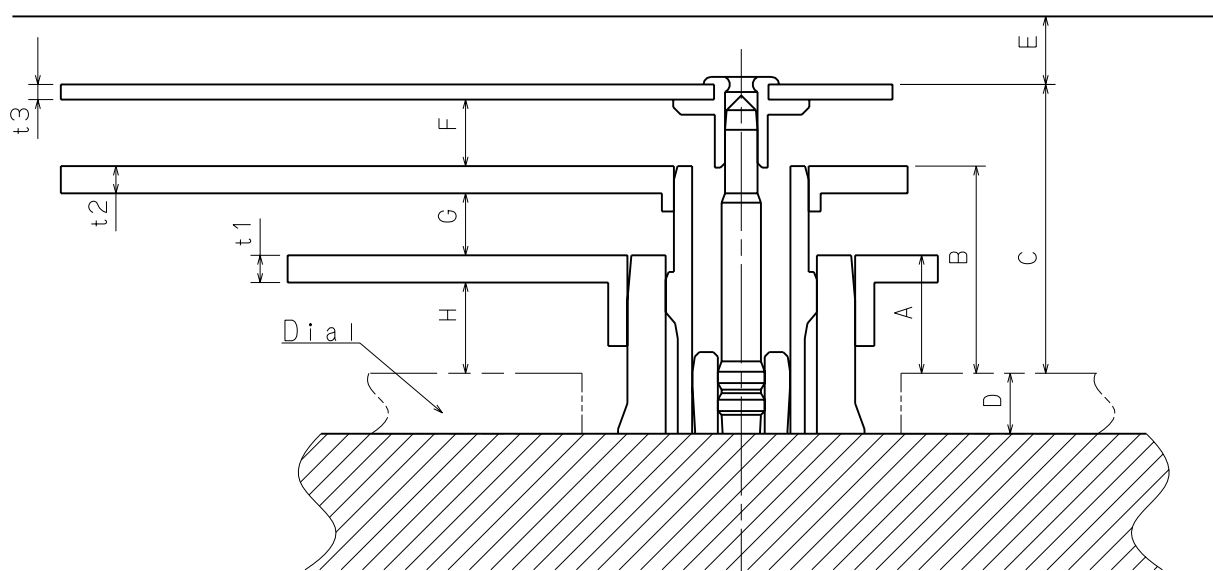


Cannon pinion



Fourth wheel and pinion

	Part. No.			Dimension		
	Hour wheel	Cannon pinion	Fourth wheel and pinion	H1	H2	H3
TYPE M	0273 183	0225 416	0144 184	68	61	42
TYPE L	0273 185	0225 417	0144 185	108	61	42

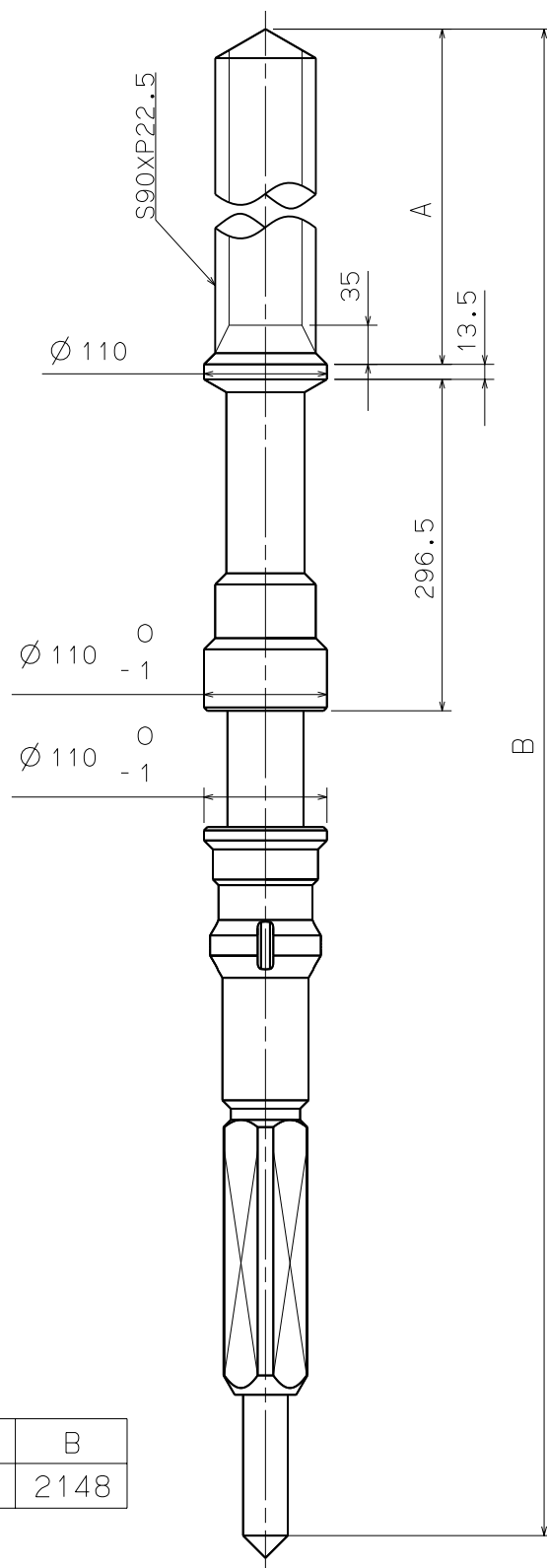


	A	B	C	D	E	F	G	H	t1	t2	t3
TYPE M	78	137	191	40	45	44	41	60	18	18	10
TYPE L	118	177	231	40	45	44	41	100	18	18	10

Scale : 20/1

Unit : 1=1/100mm

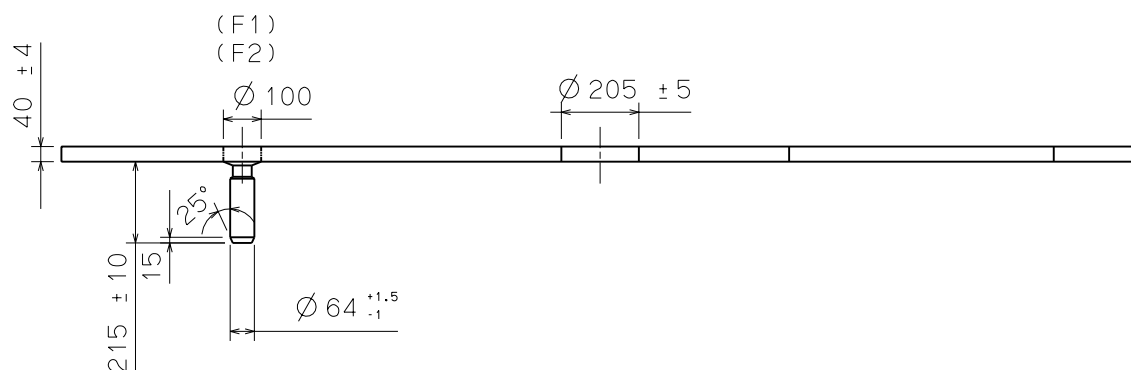
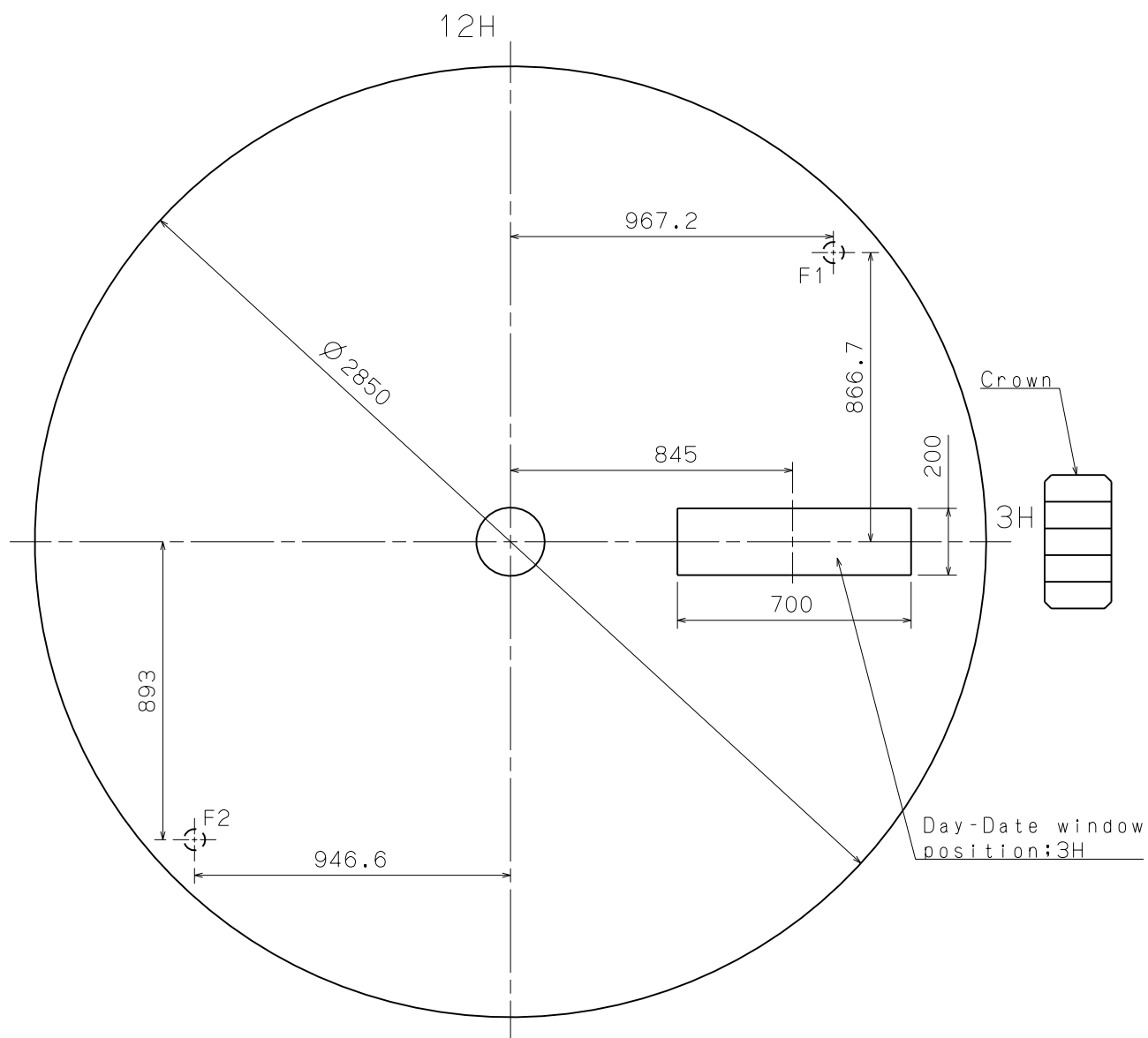
Version:1



Parts No.	A	B
0351 200	1100	2148

Scale : 15/1
Unit : 1=1/100mm

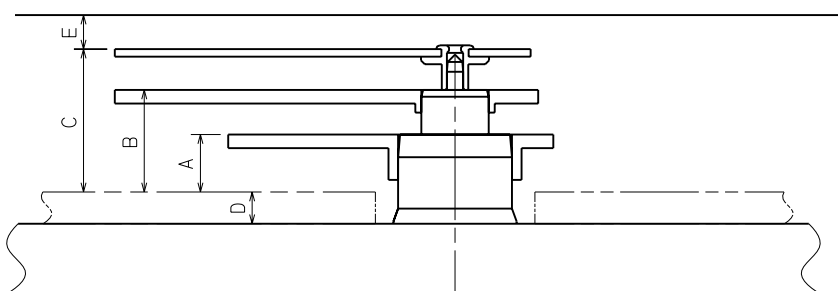
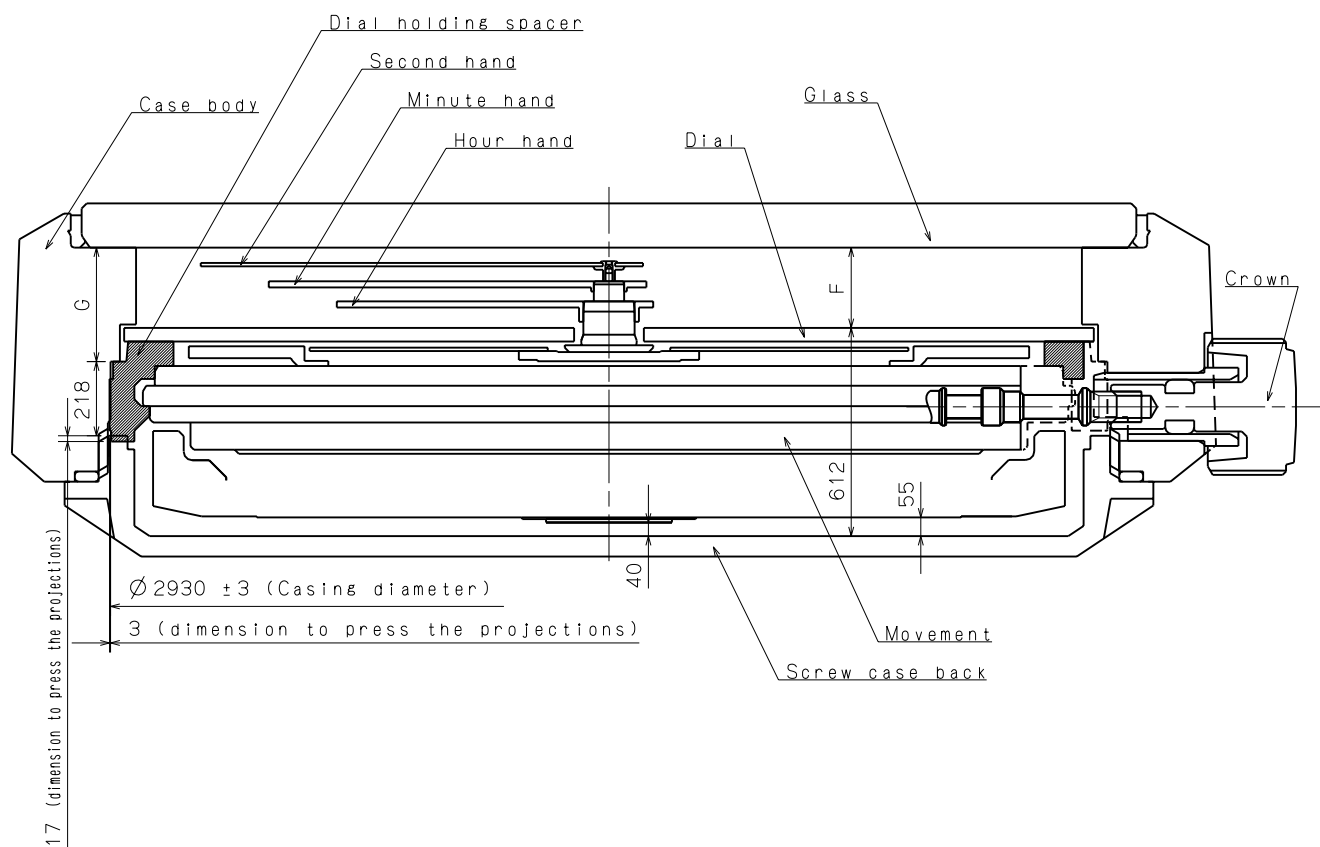
Version:1



Scale : 5/1

Unit : 1=1/100mm

Version: 1



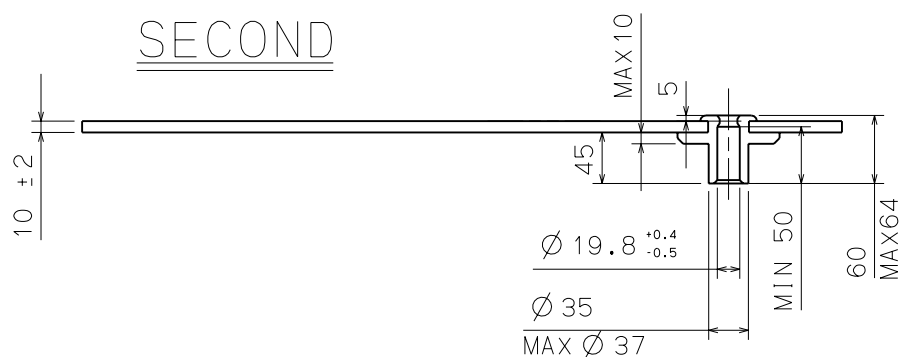
	A	B	C	D	E	F	G
TYPE M	78	137	191	40	45	236	335
TYPE L	118	177	231	40	45	276	375

Scale : -

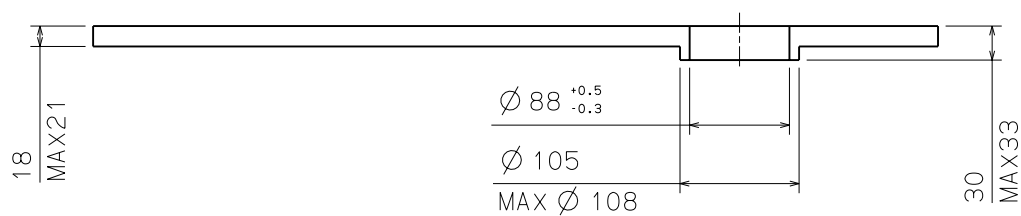
Unit : 1=1/100mm

Version:1

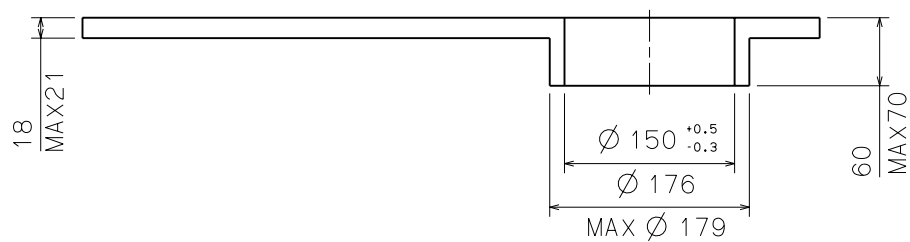
SECOND



MINUTE



HOUR



Scale : -

Unit : 1=1/100mm

Version : 1