

Cal. NH15A

ϕ 23.8 mm

H 6.01 mm

Item	Version No.
Specification	Version 1
Appearance - 1	Version 1
Appearance - 2	Version 1
Casing	Version 1
Hand Fitting	Version 1
Hand Setting Stem	Version 1
Dial	Version 1
Dial Support	Version 1
Casing Ring	Version 1
Assembly Plan	Version 1
Hands	Version 1



MOVEMENT SPECIFICATION

CAL.NH15A 10 1/2 Ligne Mechanical Movement Three Hands with Date

1. MOVEMENT DIMENSIONS

· Outside diameter	φ 23.80 mm
· Casing diameter	φ 23.40 mm
· Total height	6.01 mm

2. BASIC FUNCTIONS

· Winding mechanism	Manual winding Automatic winding with ball bearing Both winding with one way clutch
· Calendar	Date display with quick date correction
· Shock resistance	Shock-absorber device for balance staff
· Jewels	21 jewels
· Regulation hands unbalance	Second : Less than 0.11 μN·m (11 mg·mm) Minute : Less than 0.75 μN·m (75 mg·mm) Hour : Less than 1.00 μN·m (100 mg·mm)
· Antimagnetic	DC : ≥ 4800 A / m AC : ≥ 1600 A / m

3. TIME PERFORMANCE

· Accuracy	-35 ~ +55 second per day at normal temperature range
· Vibration frequency	21,600 vibrations per hour
· Amplitude	Above 150°
· Duration time	More than 40 hours

4. HANDLING AND CORRECTIONS

1) Crown at normal position	Clockwise : Manual winding Counterclockwise : Free
2) Crown pulled out to 1st click	Clockwise : Free Counterclockwise : Quick date correction
3) Crown pulled out to 2nd click	Time setting

5. DIAL FIXED METHOD

The dial is fixed by two dial leg holes with eccentric pins

6. FITTING FORCE FOR HANDS

Second hand	: Less than 30 N
Minute hand	: Less than 50 N
Hour hand	: Less than 50 N

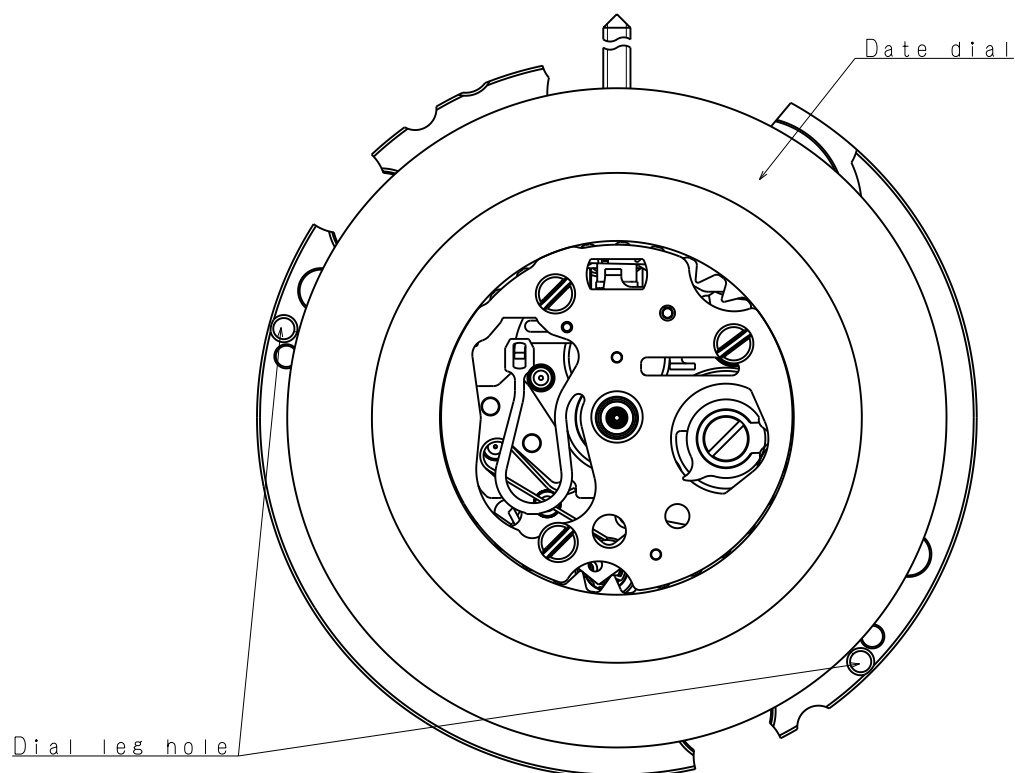
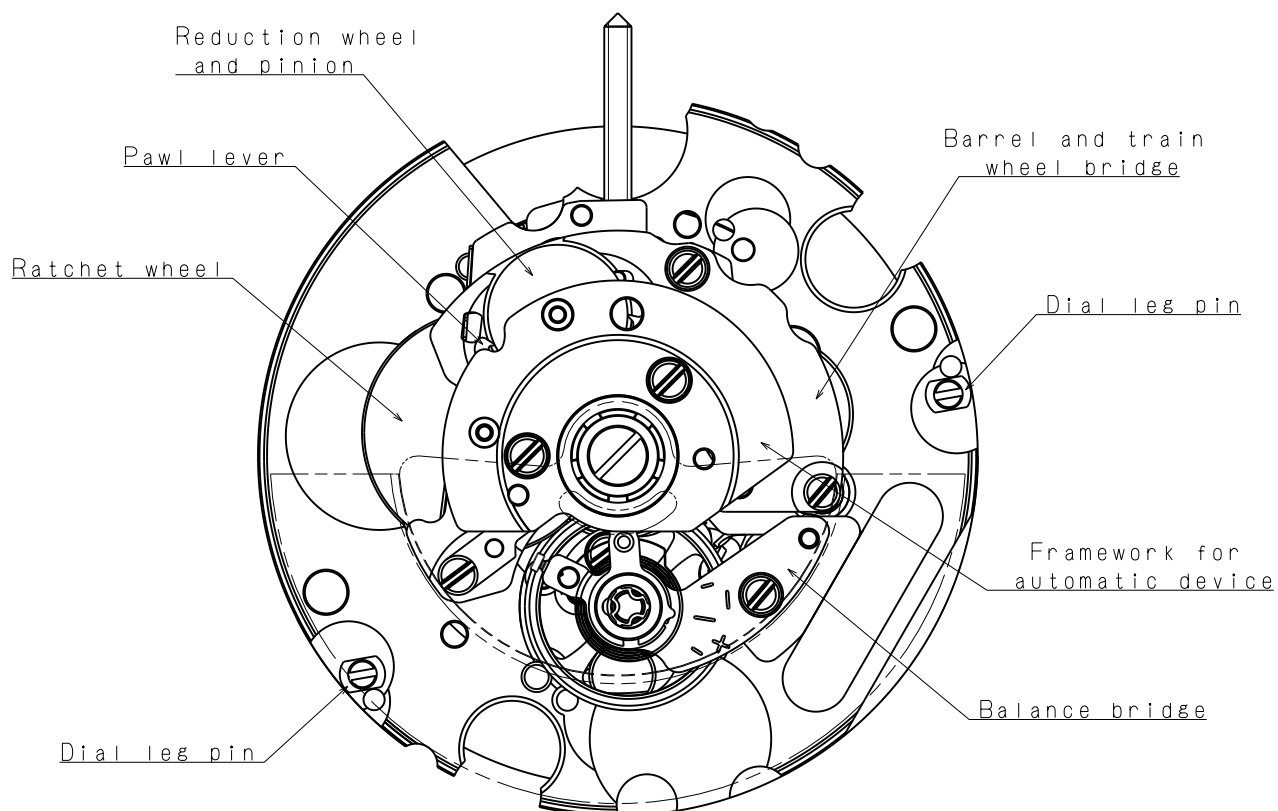
7. CASING

The movement is fixed by casing ring
*1. Non-corresponding with Diver's watch

8. TEST OF ACCURACY

· Equipment to be used	Witschi WATCH EXPERT (II)
· Duration of measurement	20 seconds

*** All specifications are subject to change without notice.**



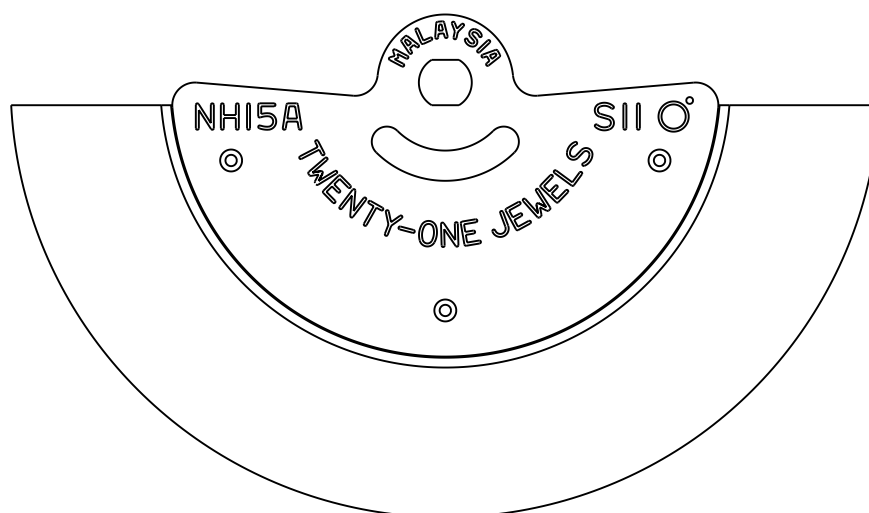
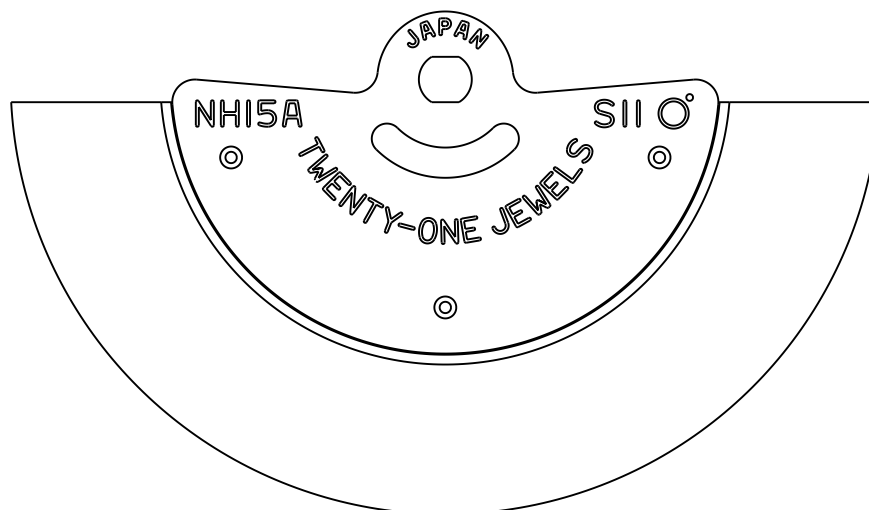
Scale : 4/1

Unit : 1=1/100mm

Version:1

Oscillating weight

Marking	Country of origin
JAPAN	JAPAN
MALAYSIA	MALAYSIA

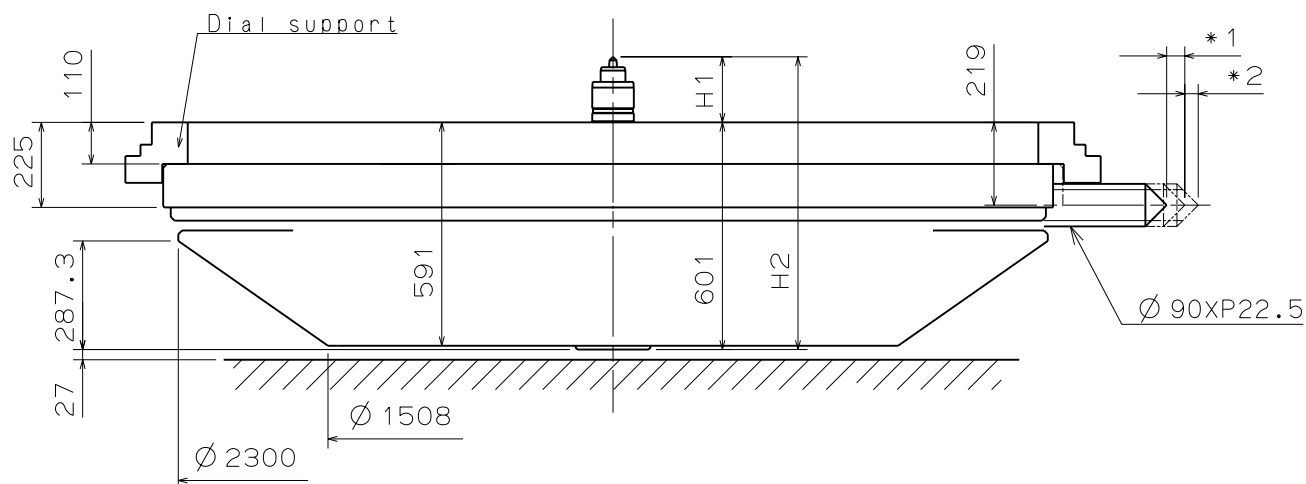


Scale : 5/1

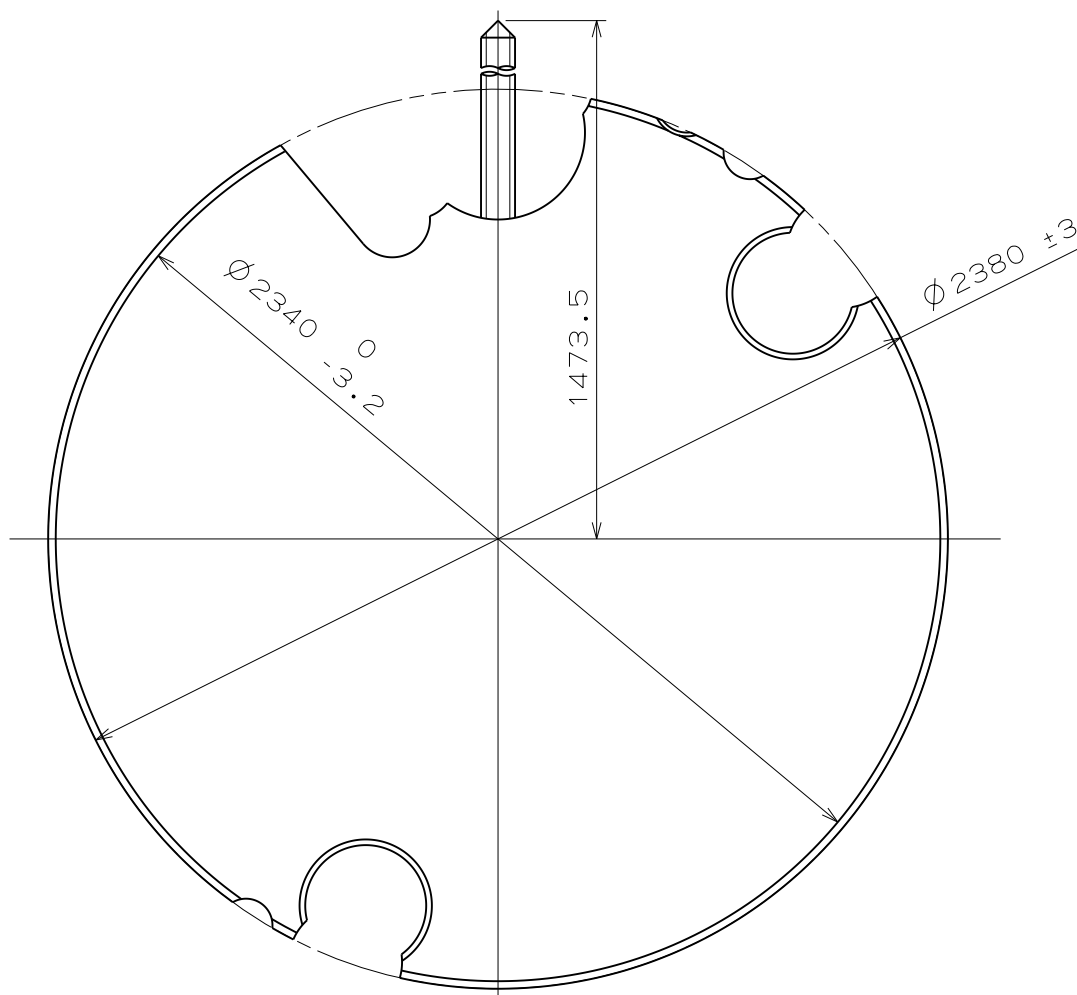
Unit : 1=1/100mm

Version: 1

- *1. First pull out stroke 48.0
- *2. Second pull out stroke 35.5



Center post		Type M
Maximum height from dial support surface	H1	173.4
Total height incl. movement	H2	774.4



Scale : 5/1

Unit : 1=1/100mm

Version:1

Hand fitting

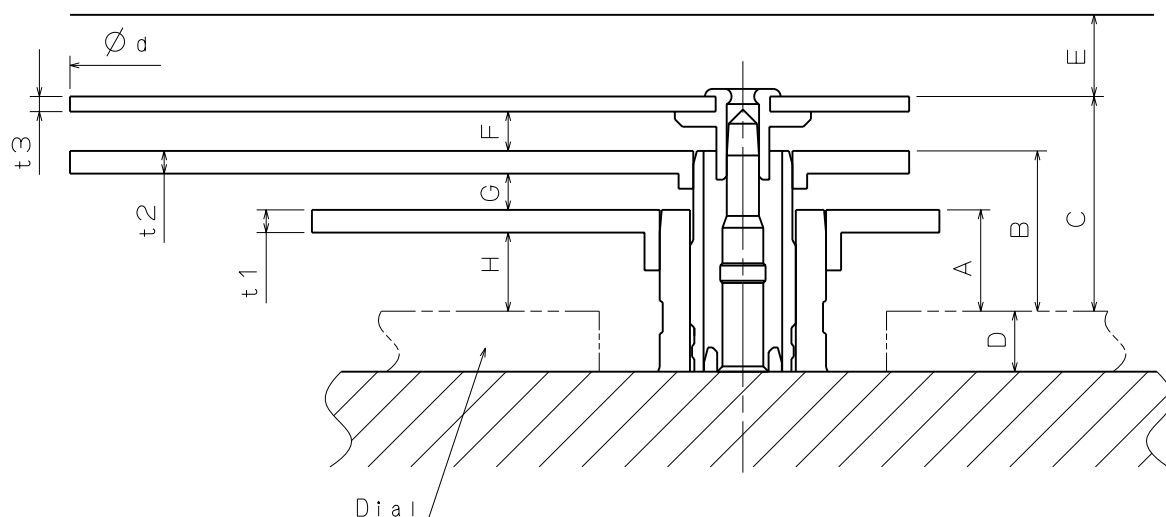
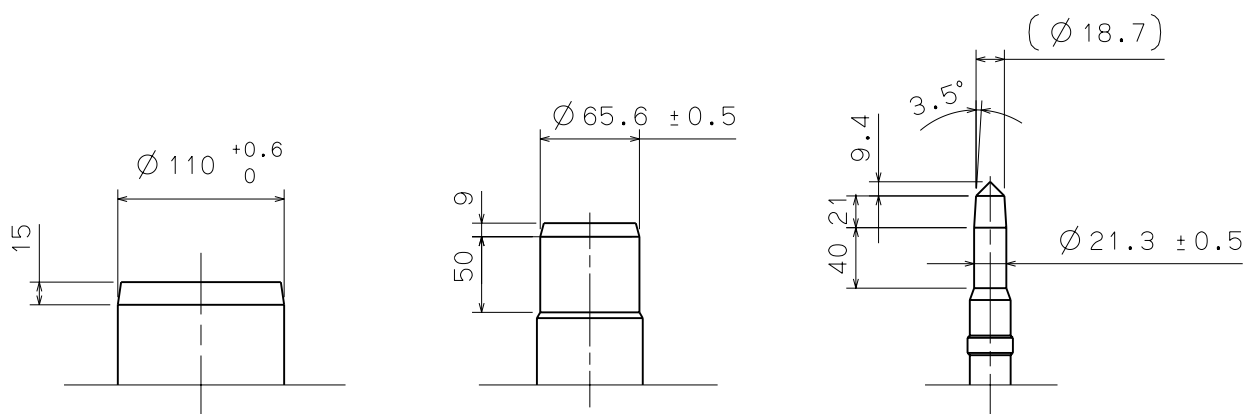
Cal. NH15A

Hour hand unbalance $\leq 1.00\mu\text{N}\cdot\text{m}$ (100mg·mm)
 Minute hand unbalance $\leq 0.75\mu\text{N}\cdot\text{m}$ (75mg·mm)
 Second hand unbalance $\leq 0.11\mu\text{N}\cdot\text{m}$ (11mg·mm)

HOURLY HAND FITTING
 Hour wheel:0273 030

MINUTE HAND FITTING
 Cannon pinion:0225 424

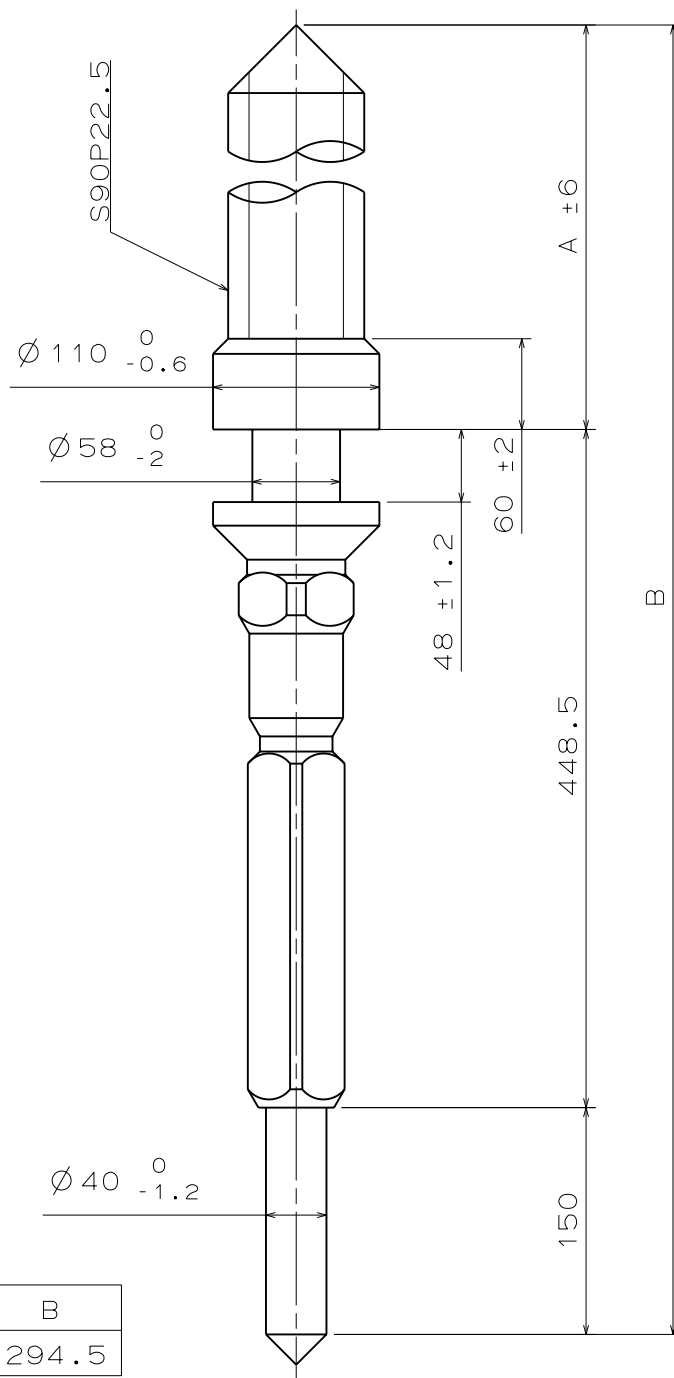
SECOND HAND FITTING
 Center second pinion:0245 429



	A	B	C	D	E	F	G	H	t1	t2	t3	ϕd
TYPE M	67	106	142	40	54	26	24	52	15	15	10	$\phi 2100\text{MAX}$

Scale : 20/1
 Unit : 1=1/100mm

Version:1

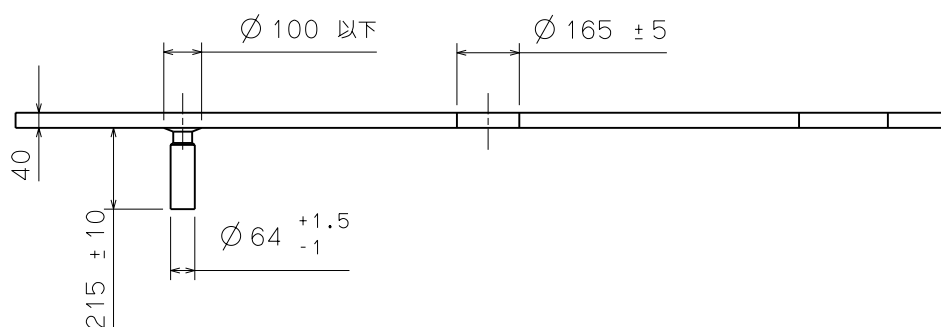
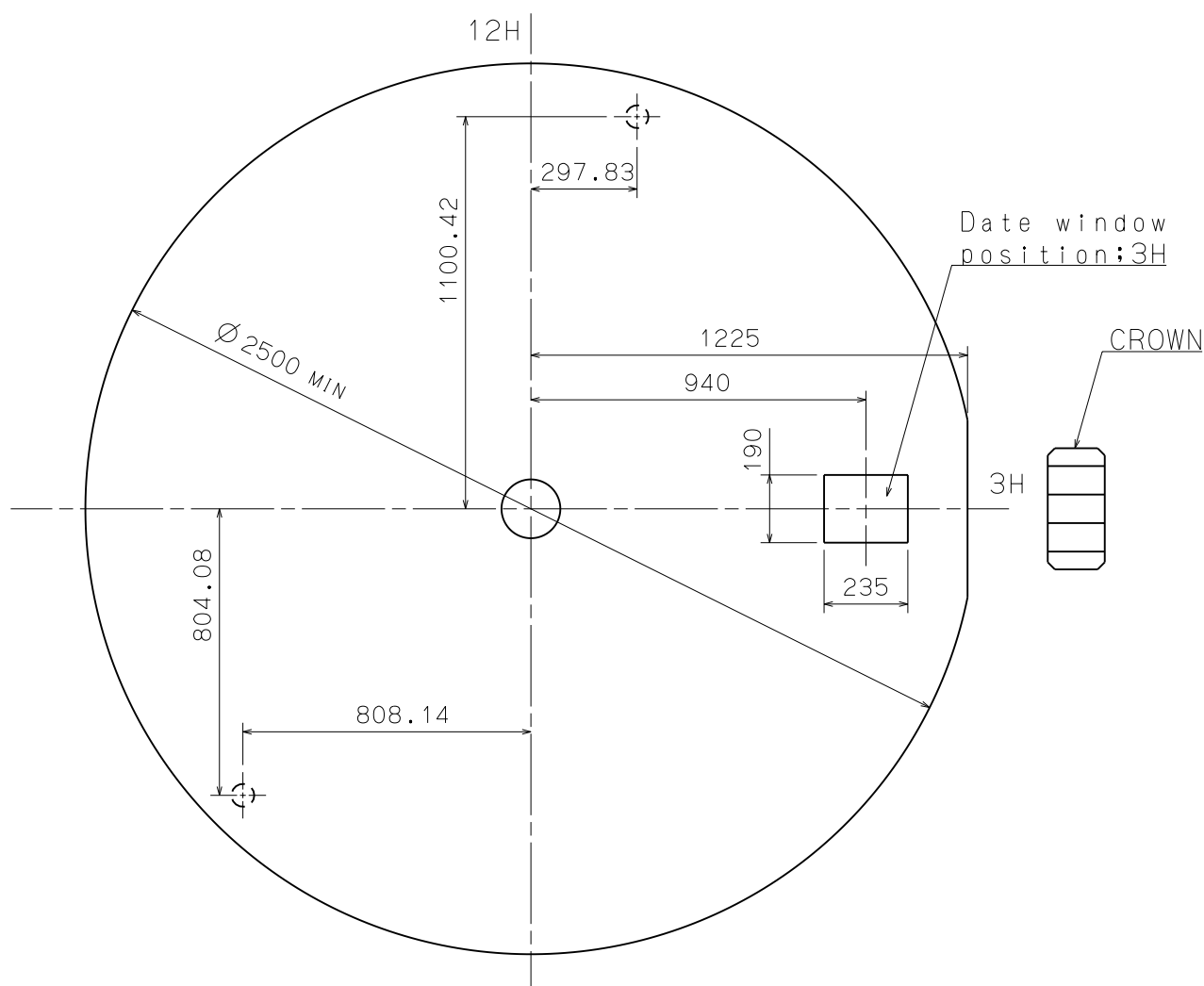


Parts No.	A	B
0351 420	696	1294.5

Scale : 20/1

Unit : 1=1/100mm

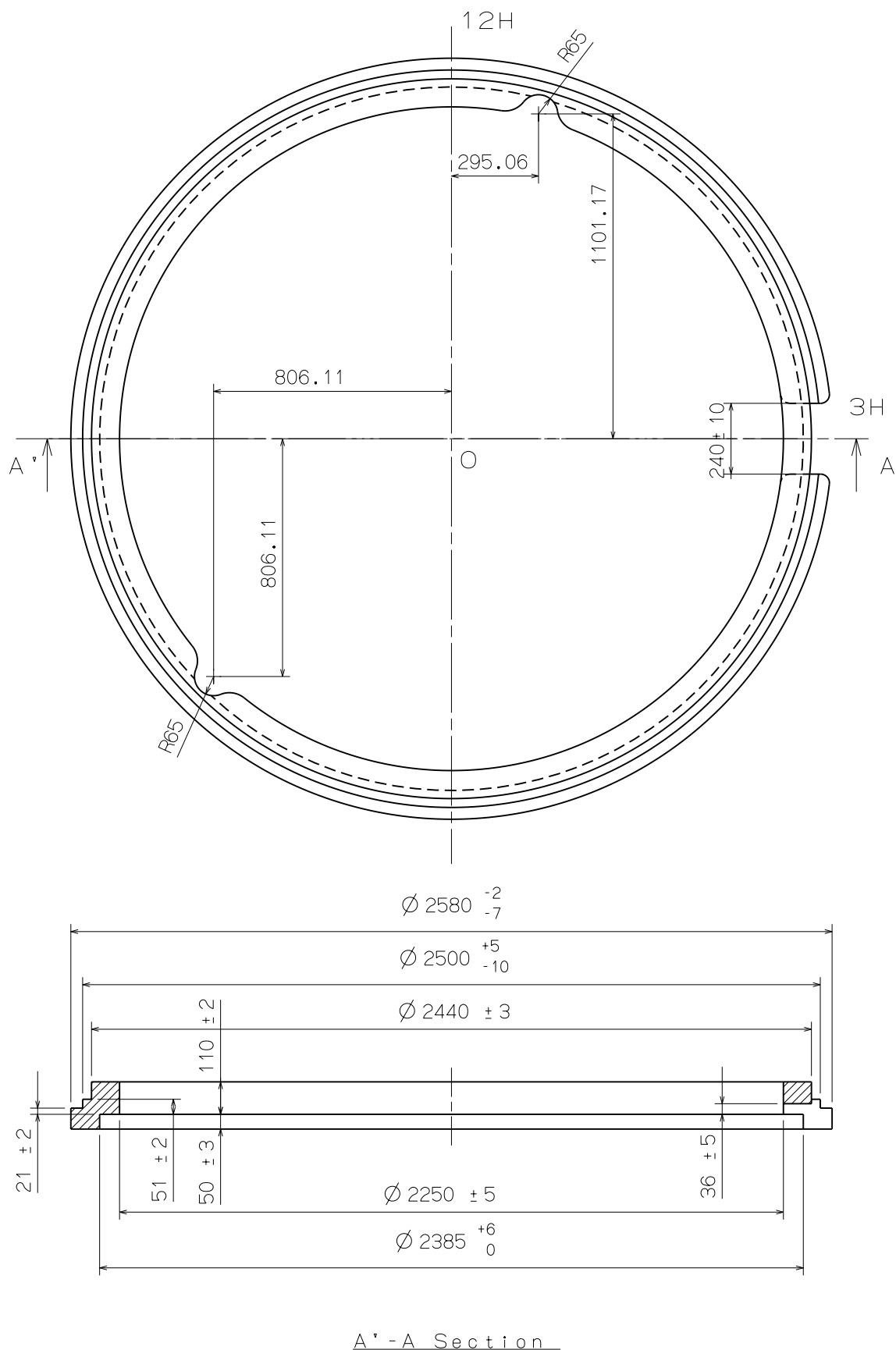
Version:1



Scale : 5/1

Unit : 1=1/100mm

Version:1



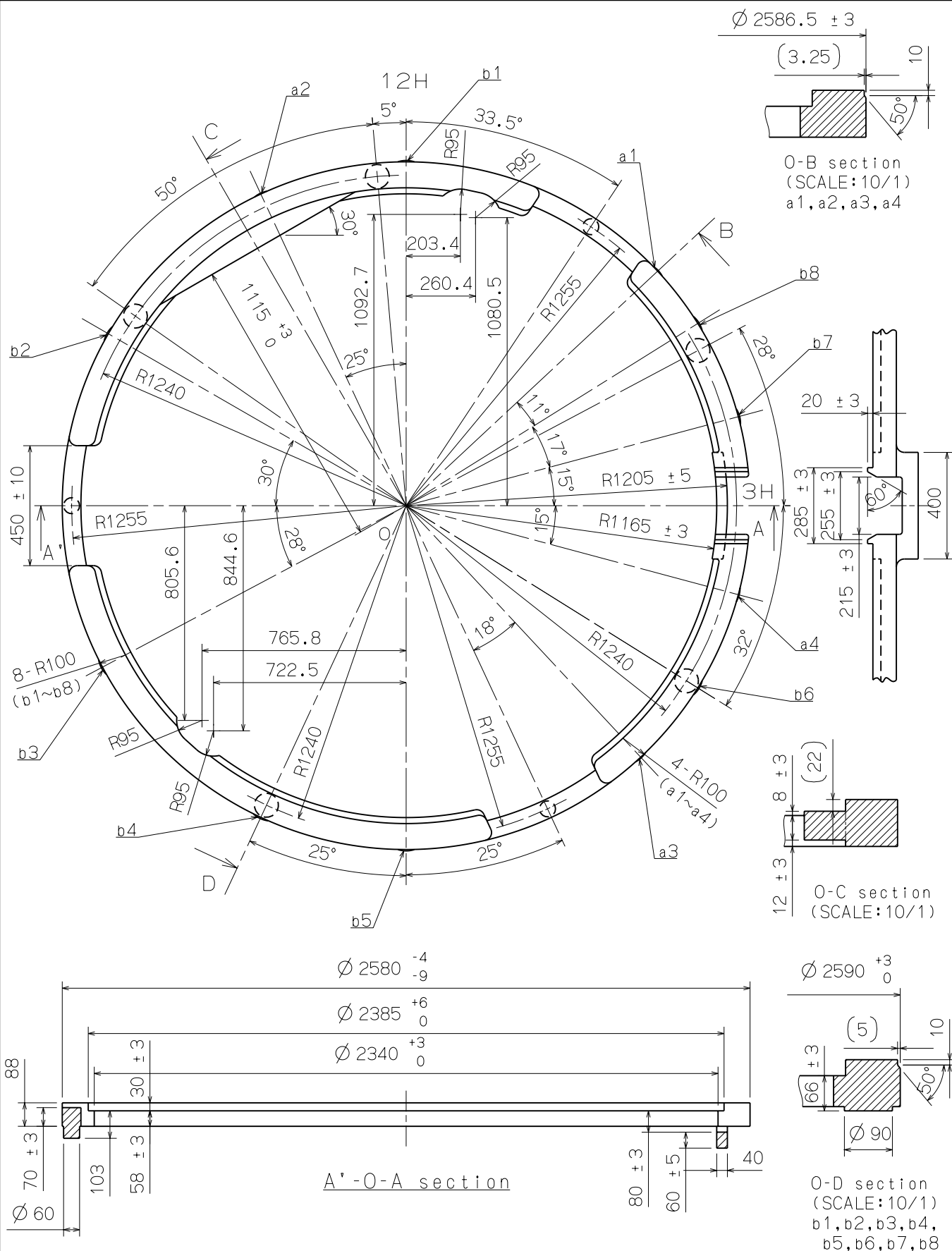
Scale : 5/1

Unit : 1=1/100mm

Version:1

Casing ring

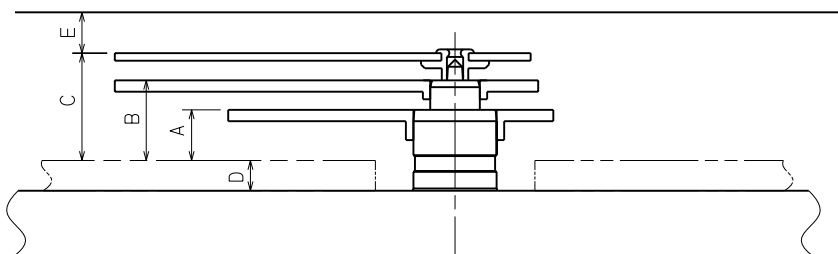
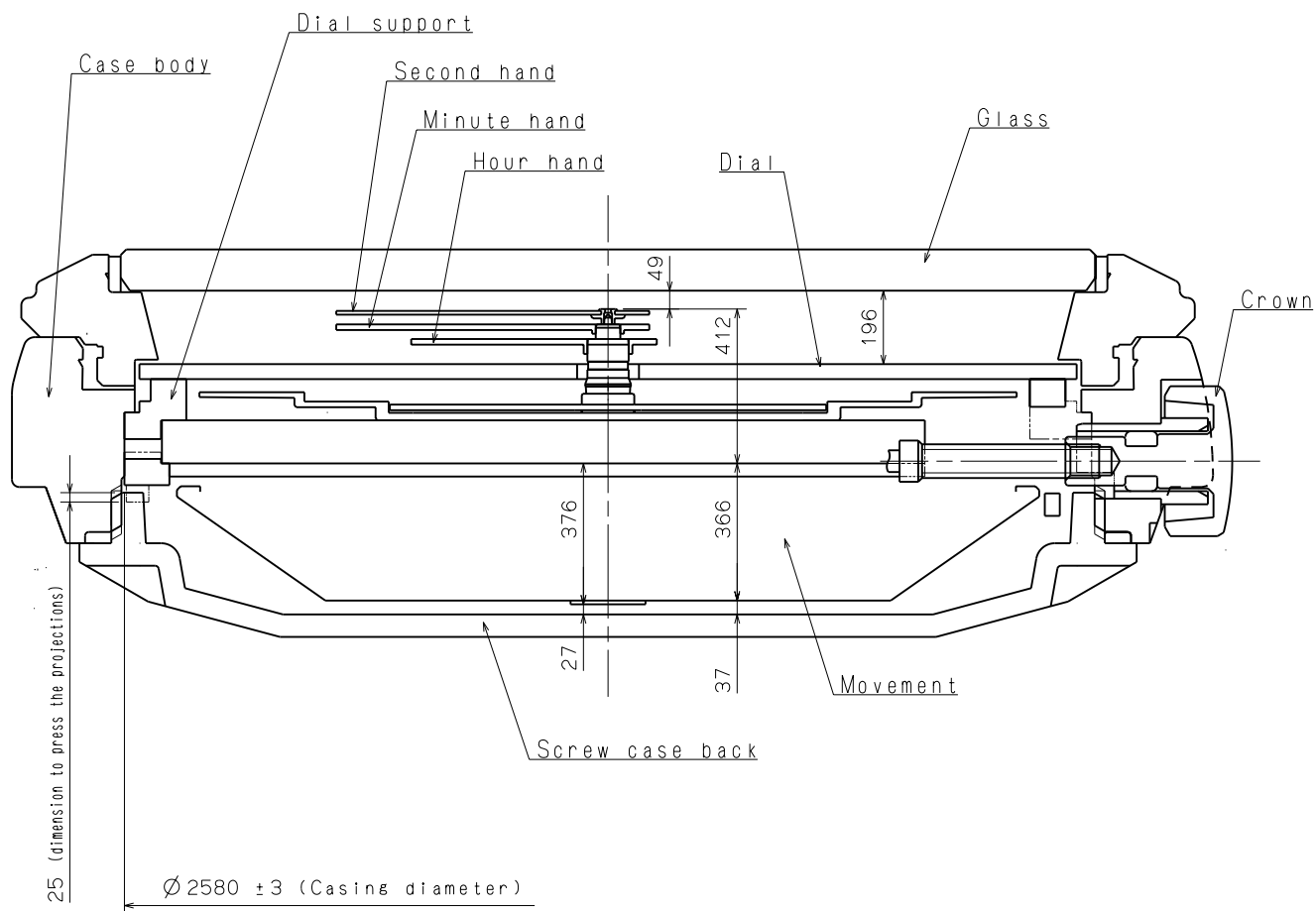
Cal. NH15A



Scale : 5/1

Unit : 1=1/100mm

Version:1

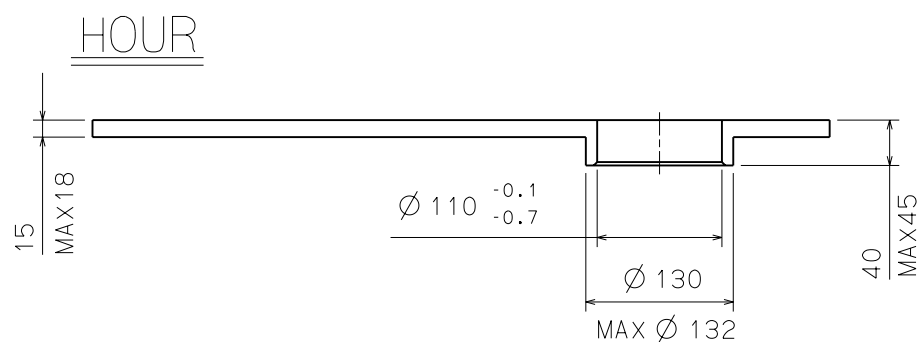
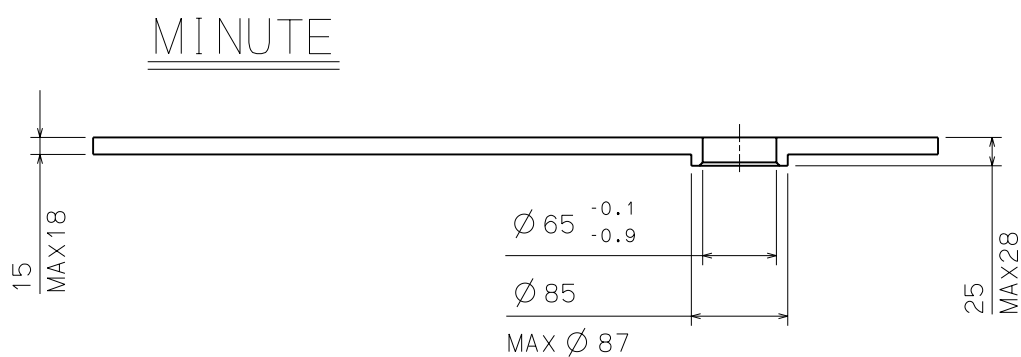
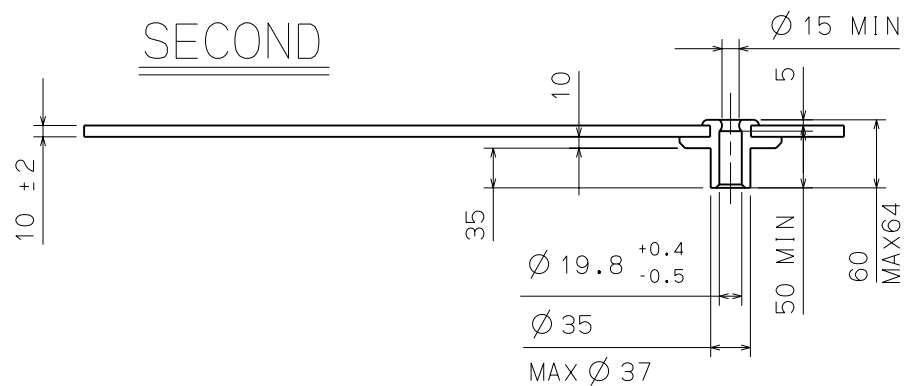


	A	B	C	D	E
TYPE M	67	106	142	40	54

Scale : -

Unit : 1=1/100mm

Version:1



Scale : -

Unit : 1=1/100mm

Version : 1