

# Cal. NH06A

$\phi$  17.50 mm

H 5.92 mm

Item	Version No.
Specification	Version 1
Appearance - 1	Version 1
Appearance - 2	Version 1
Casing	Version 1
Hand Fitting	Version 1
Hand Setting Stem	Version 1
Dial	Version 1
Dial Support	Version 1
Casing Ring	Version 1
Assembly Plan	Version 1
Hands	Version 1



## MOVEMENT SPECIFICATION

### CAL.NH06A 7 3/4 Ligne Mechanical Movement Three Hands with Day & Date

#### 1. MOVEMENT DIMENSIONS

· Outside diameter	φ 17.50 mm
· Casing diameter	φ 17.20 mm
· Total height	5.92 mm

#### 2. BASIC FUNCTIONS

· Winding mechanism	Manual winding Automatic winding with ball bearing Both winding with one way clutch
· Calendar	Day & Date display with quick day & date correction
· Shock resistance	Shock-absorber device for balance staff
· Jewels	21 jewels
· Regulation hands unbalance	Second : Less than 0.11 μN·m ( 11 mg·mm ) Minute : Less than 0.75 μN·m ( 75 mg·mm ) Hour : Less than 1.00 μN·m ( 100 mg·mm )
· Antimagnetic	DC : ≥ 4800 A / m AC : ≥ 1600 A / m

#### 3. TIME PERFORMANCE

· Accuracy	-35 ~ +55 second per day at normal temperature range
· Vibration frequency	21,600 vibrations per hour
· Amplitude	Above 150°
· Duration time	More than 40 hours

#### 4. HANDLING AND CORRECTIONS

1) Crown at normal position	Clockwise : Manual winding Counterclockwise : Free
2) Crown pulled out to 1st click	Clockwise : Quick day correction Counterclockwise : Quick date correction
3) Crown pulled out to 2nd click	Time setting

#### 5. DIAL FIXED METHOD

The dial is fixed by two dial leg holes with eccentric pins

#### 6. FITTING FORCE FOR HANDS

Second hand	: Less than 30 N
Minute hand	: Less than 50 N
Hour hand	: Less than 50 N

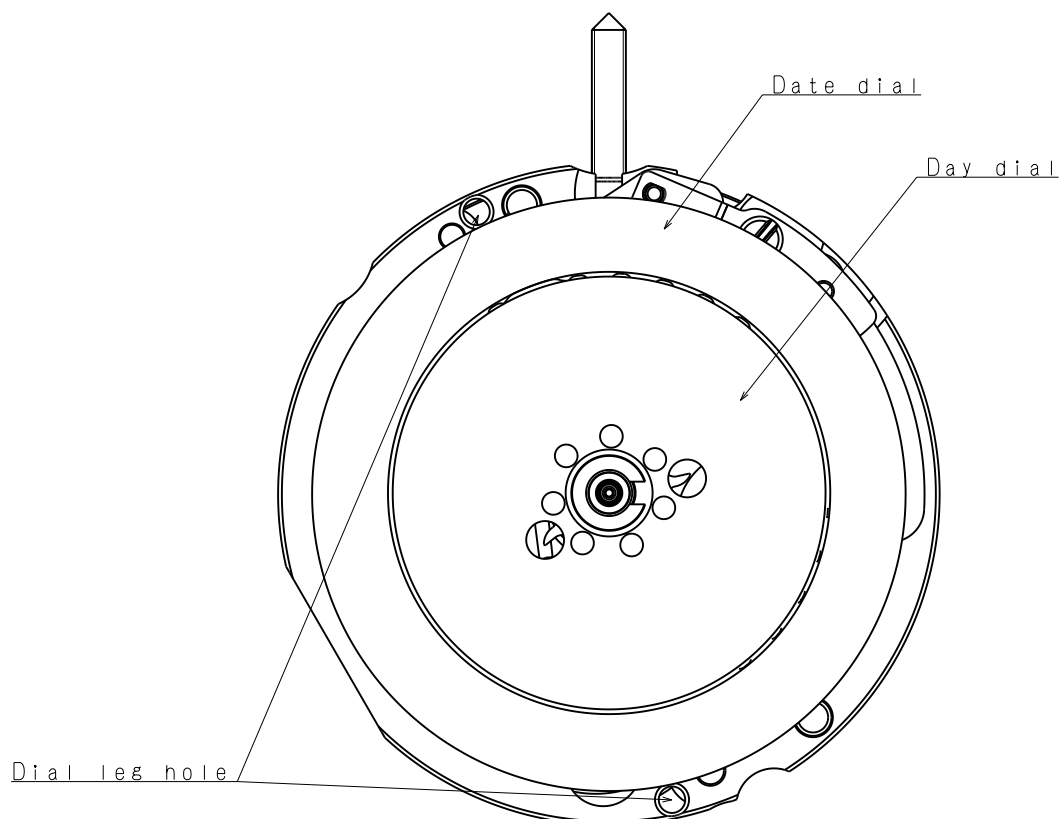
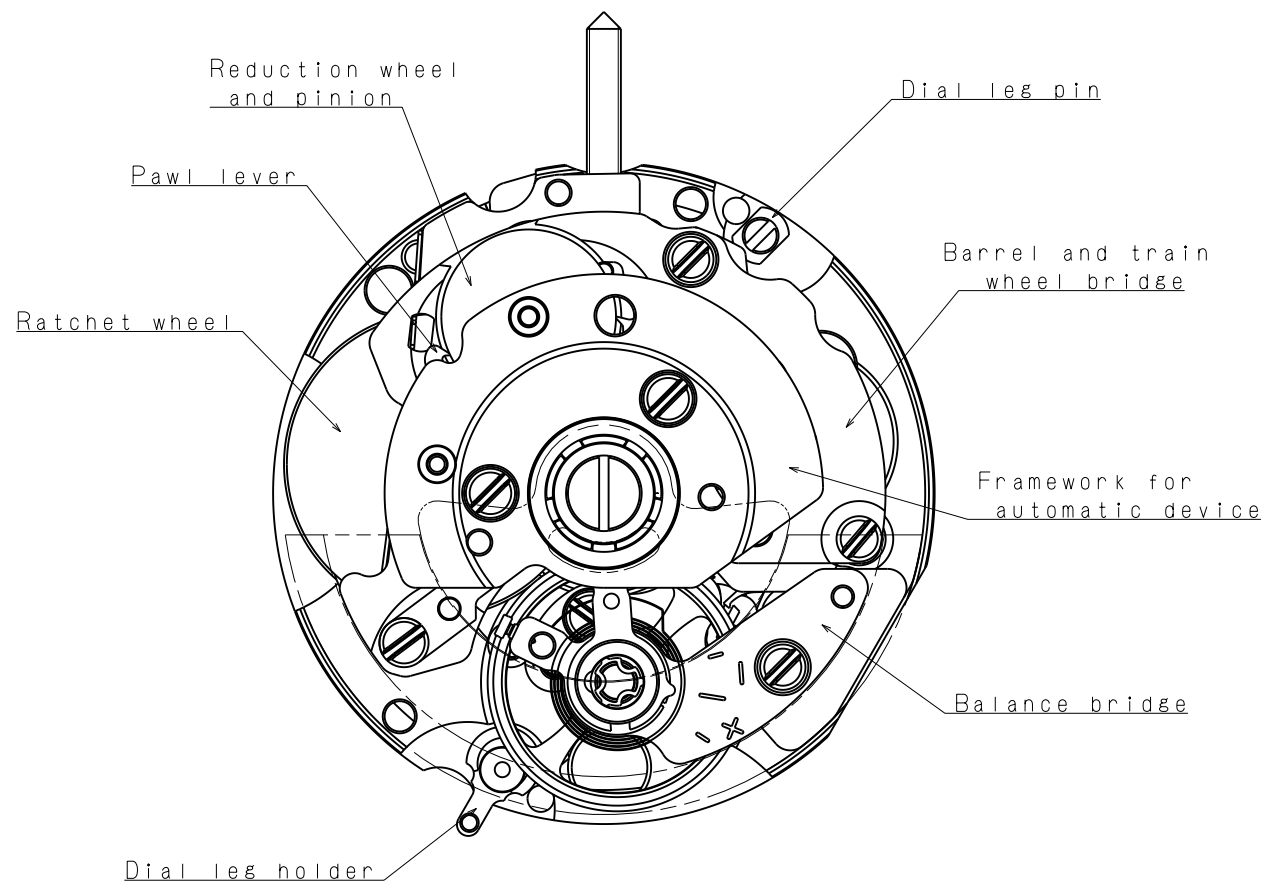
#### 7. CASING

The movement is fixed by casing ring  
\*1. Non-corresponding with Diver's watch

#### 8. TEST OF ACCURACY

· Equipment to be used	Witschi WATCH EXPERT (II)
· Duration of measurement	20 seconds

**\* All specifications are subject to change without notice.**



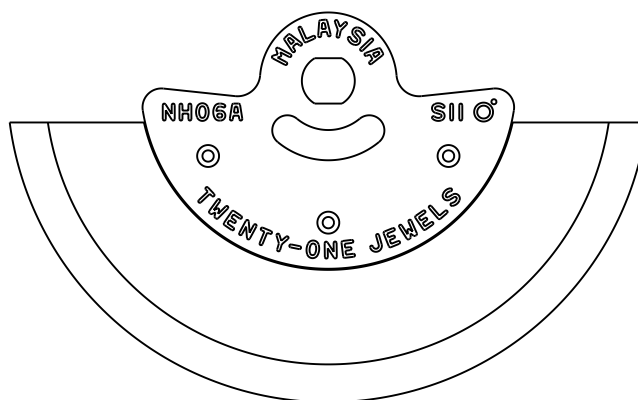
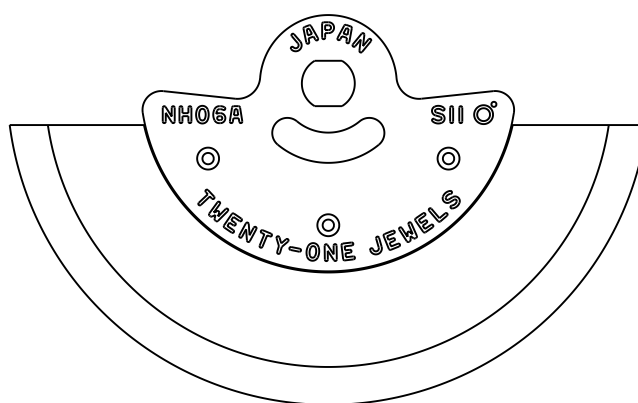
Scale : 5/1

Unit : 1=1/100mm

Version:1

Oscillating weight

Marking	Country of origin
JAPAN	JAPAN
MALAYSIA	MALAYSIA

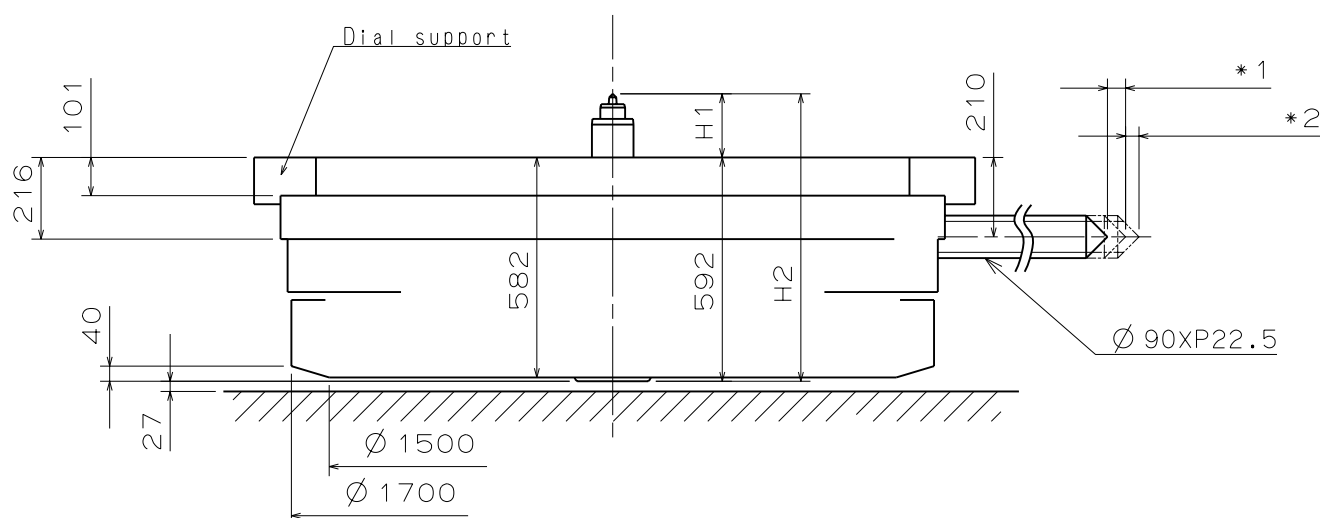


Scale : 5/1

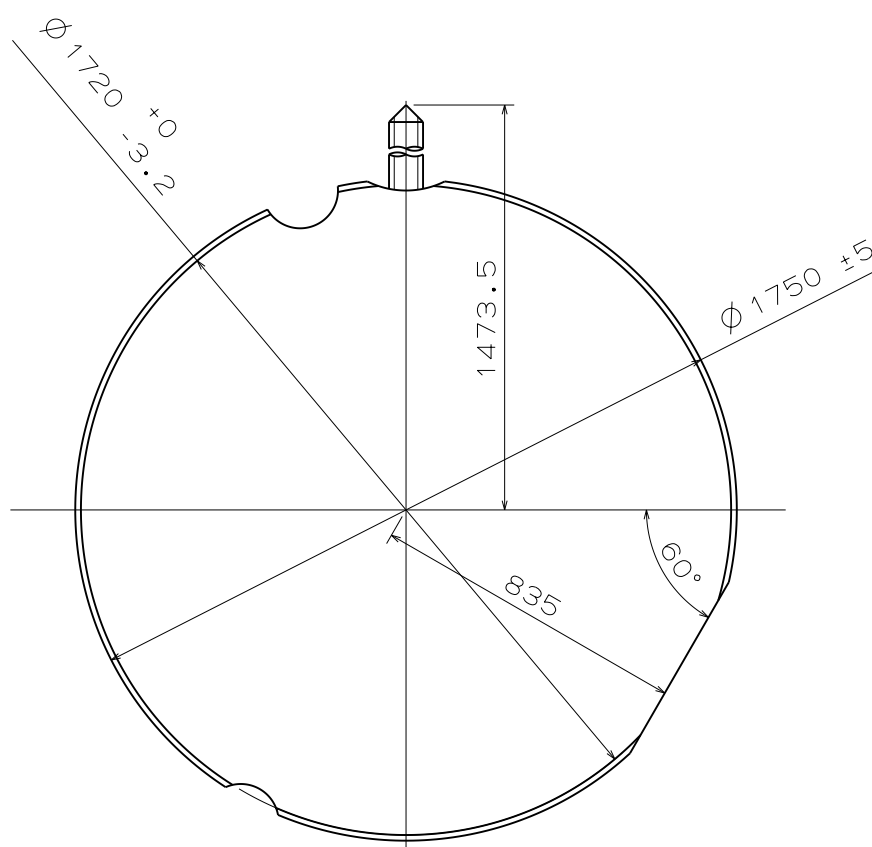
Unit : 1=1/100mm

Version: 1

- \*1. First pull out stroke 48.0
- \*2. Second pull out stroke 35.5



Center post		Type M
Maximum height from dial support surface	H1	168.4
Total height incl. movement	H2	760.4



Scale : 5/1

Unit : 1=1/100mm

Version:1

# Hand fitting

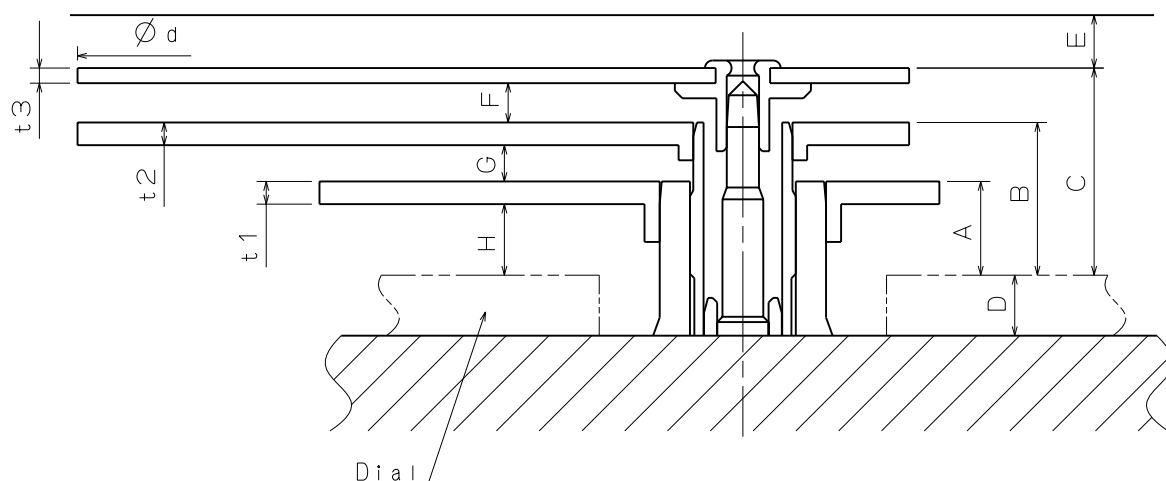
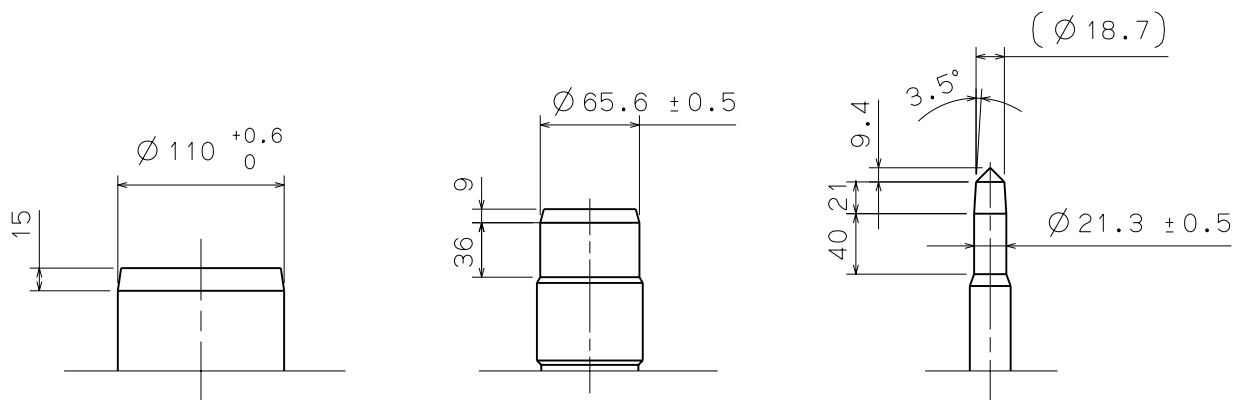
Cal. NH06A

Hour hand unbalance  $\leq 1.00\mu\text{N}\cdot\text{m}$  (100mg·mm)  
 Minute hand unbalance  $\leq 0.75\mu\text{N}\cdot\text{m}$  (75mg·mm)  
 Second hand unbalance  $\leq 0.11\mu\text{N}\cdot\text{m}$  (11mg·mm)

HOUR HAND FITTING  
 Hour wheel:0271 425

MINUTE HAND FITTING  
 Cannon pinion:0225 422

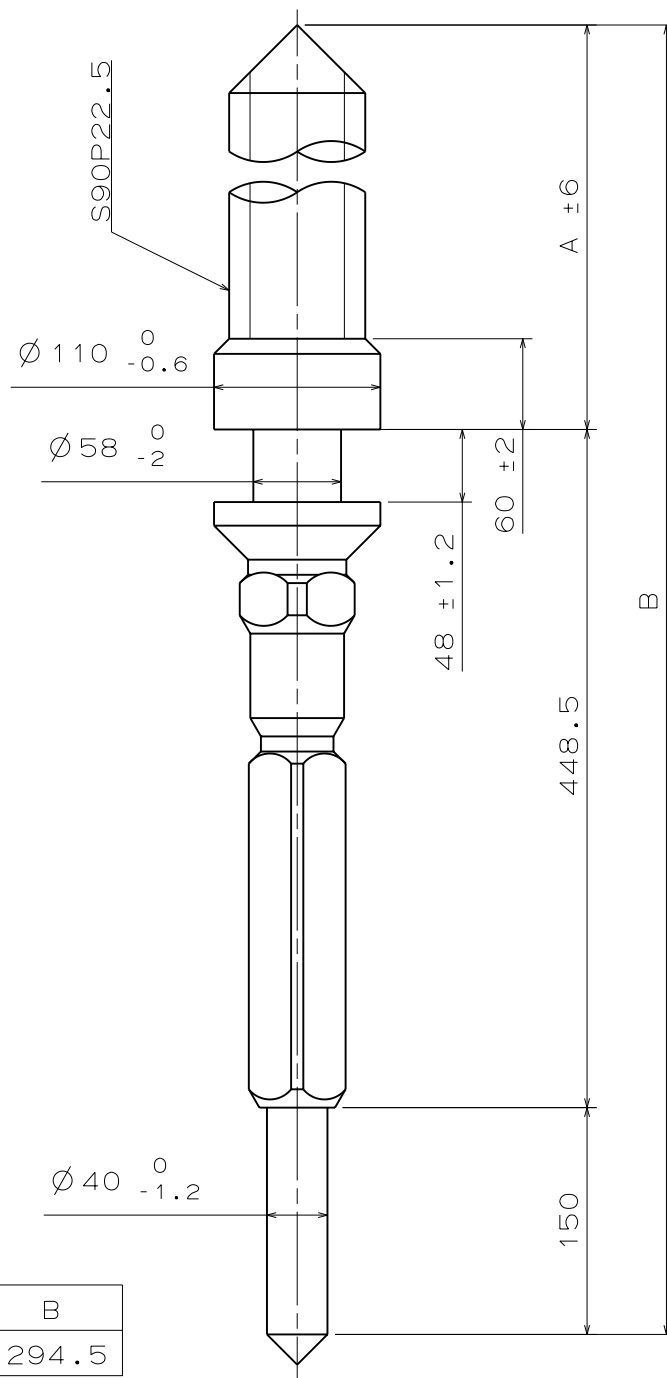
SECOND HAND FITTING  
 Center second pinion:0245 425



	A	B	C	D	E	F	G	H	t1	t2	t3	Ø d
TYPE M	62	101	137	40	35	26	24	47	15	15	10	Ø 1900MAX

Scale : 20/1  
 Unit : 1=1/100mm

Version:1

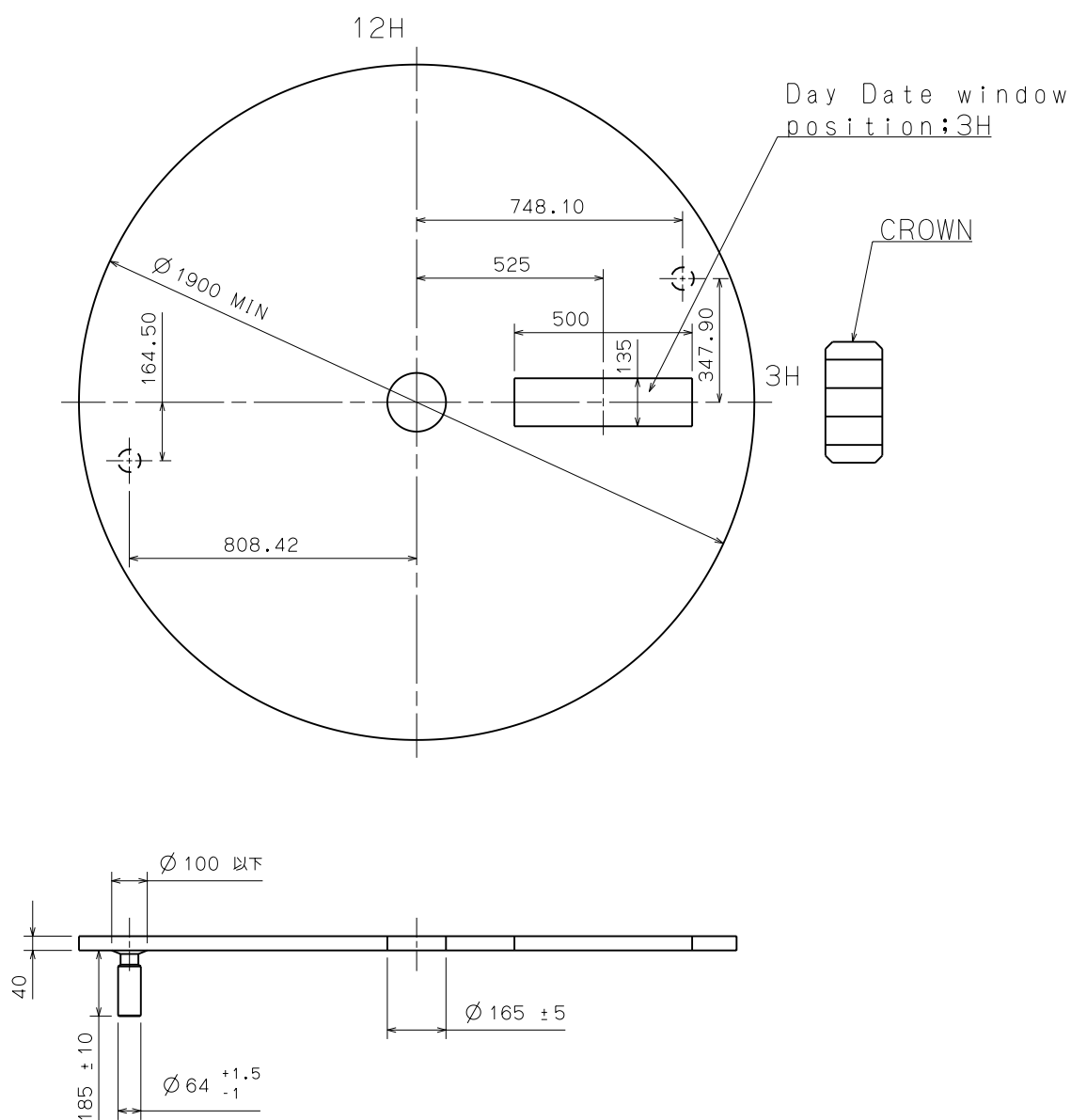


Parts No.	A	B
0351 420	696	1294.5

Scale : 20/1

Unit : 1=1/100mm

Version:1

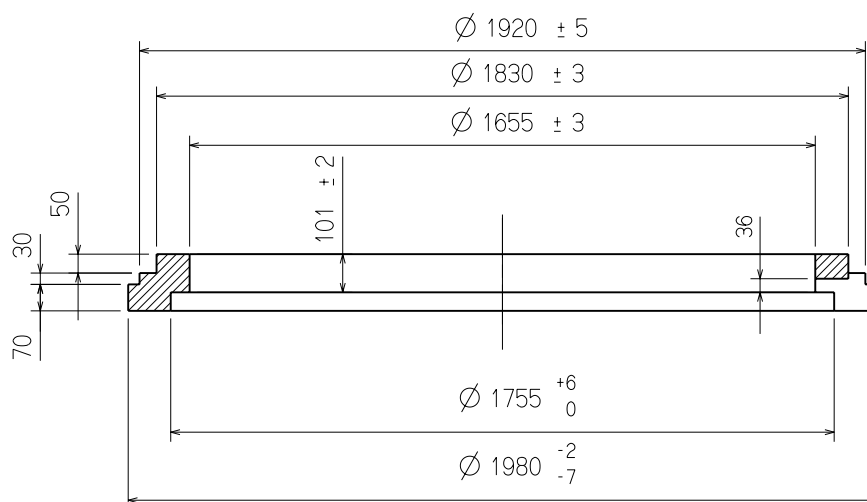
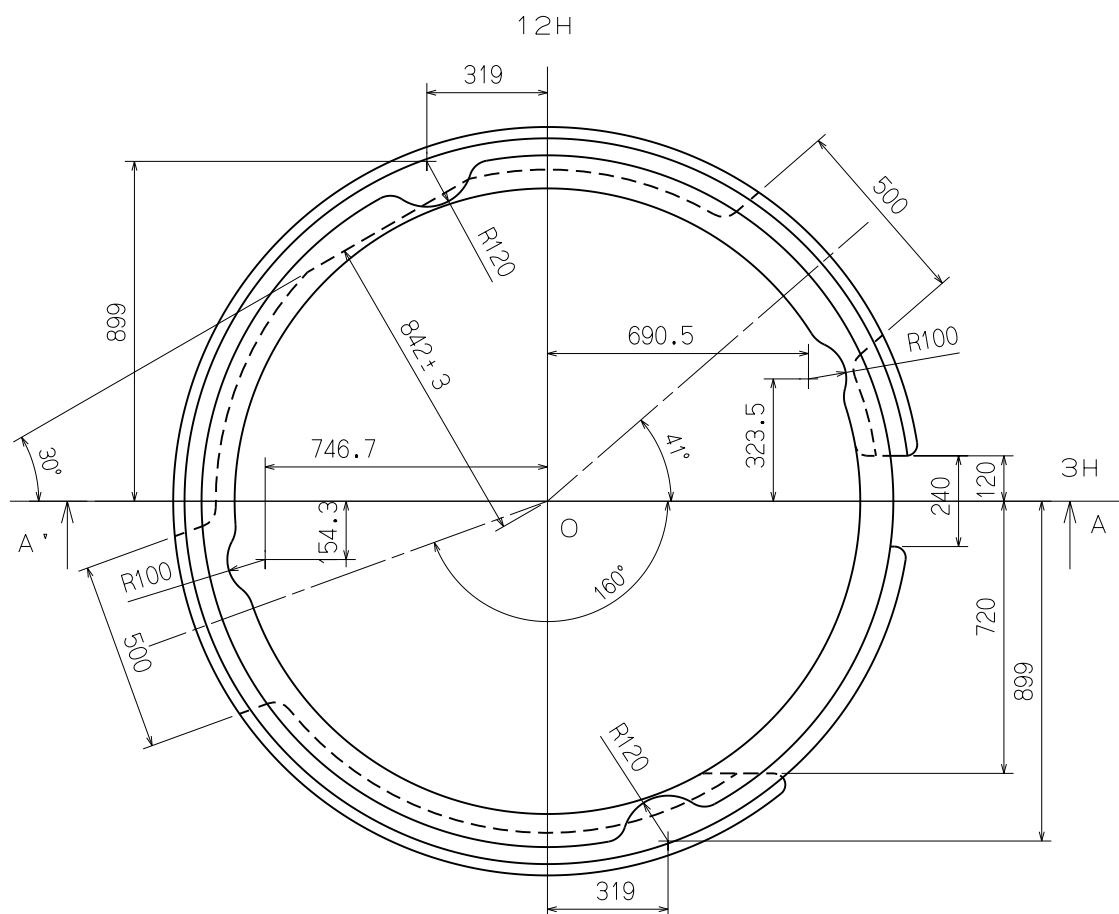


Scale : 5/1

Unit : 1=1/100mm

Version:1





A'-A Section

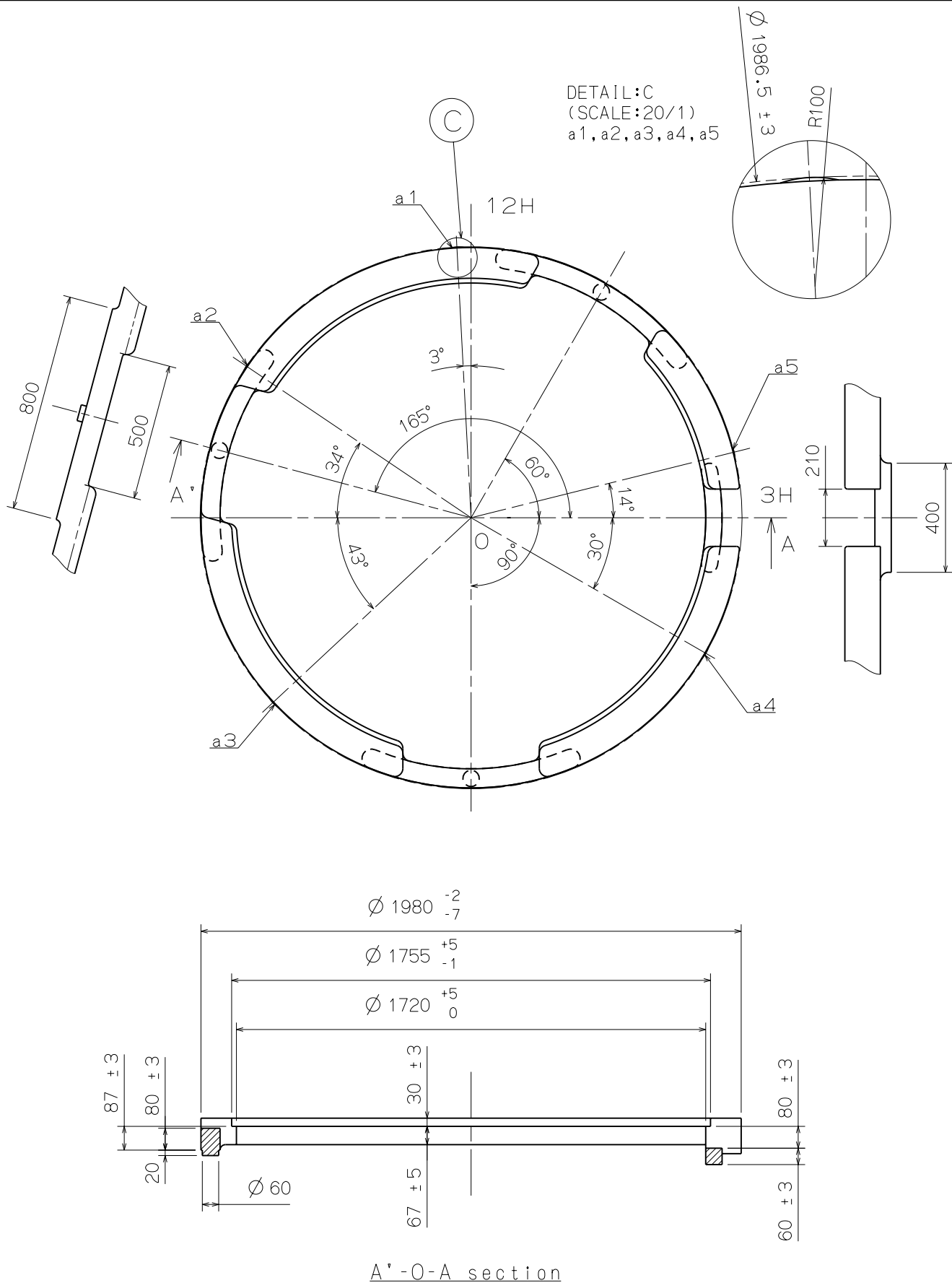
Scale : 5/1

Unit : 1=1/100mm

Version: 1

# Casing ring

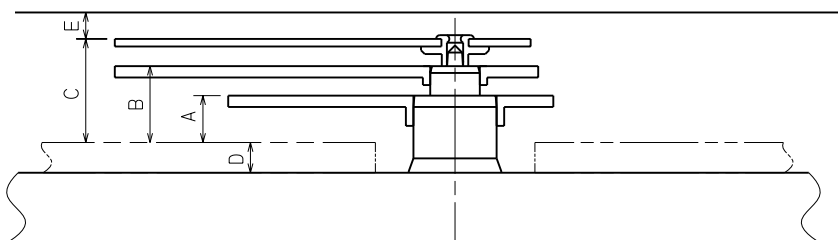
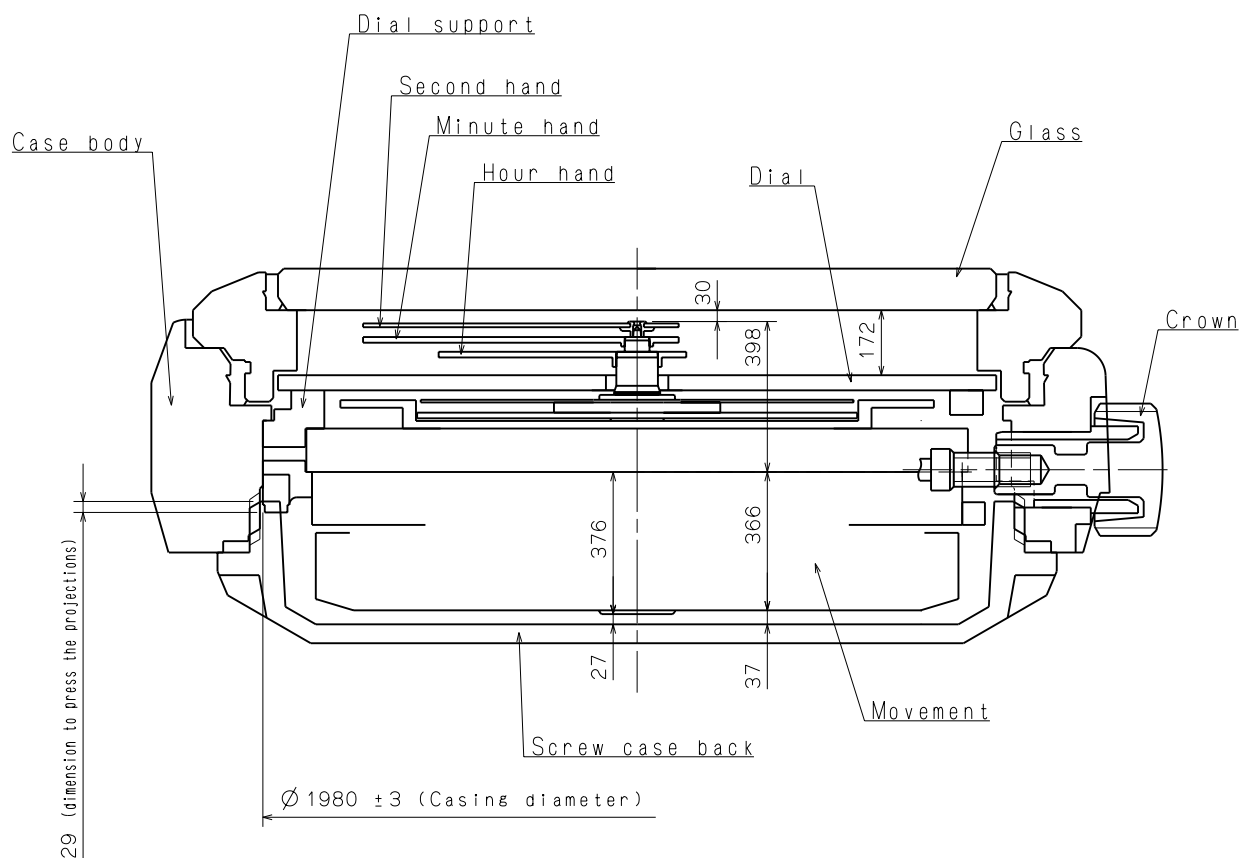
Cal. NH06A



Scale : 5/1

Unit : 1=1/100mm

Version: 1

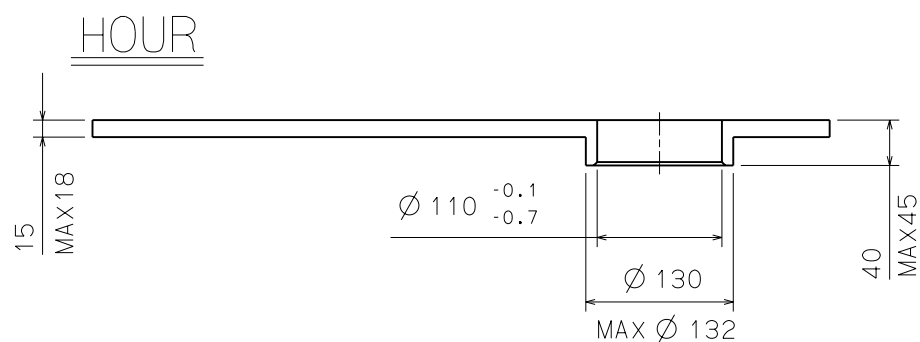
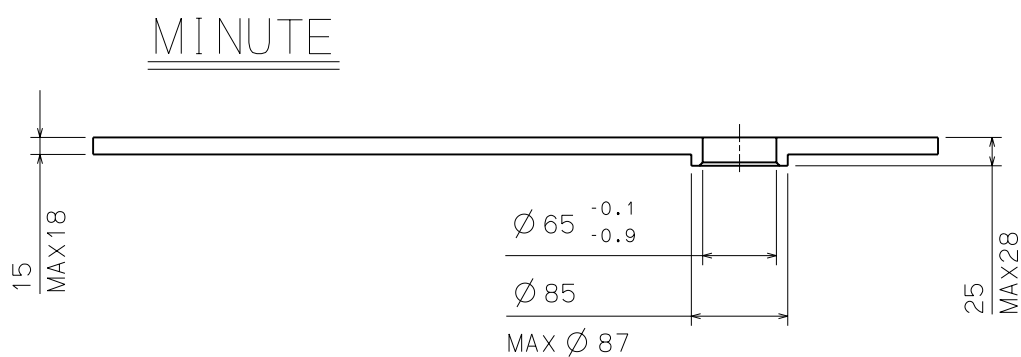
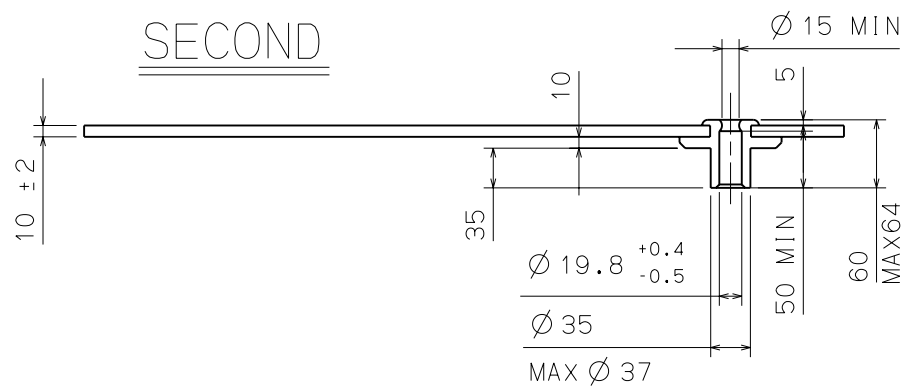


	A	B	C	D	E
TYPE M	62	101	137	40	35

Scale : -

Unit : 1=1/100mm

Version:1



Scale : -

Unit : 1=1/100mm

Version : 1