

# Cal. NE15B

$\phi$  27.40 mm

H 5.32 mm

Item	Version No.
Specification	Version 1
Appearance	Version 1
Casing	Version 1
Hand Fitting	Version 1
Hand Setting Stem	Version 1
Dial	Version 1
Casing Ring	Version 1
Dial Support	Version 1
Assembly Plan	Version 1
Hands	Version 1
Casing Clamp	Version 1



## MOVEMENT SPECIFICATION

### CAL. NE15B 12 Ligne Mechanical Movement Three Hands with Date

#### 1. MOVEMENT DIMENSIONS

- Outside diameter  $\phi$  27.40 mm
- Casing diameter  $\phi$  27.00 mm
- Total height 5.32 mm

#### 2. BASIC FUNCTIONS

- Basic function
  - Three hands
  - Manual winding
  - Automatic winding with ball bearing  
Both winding with one way clutch
  - Date display with quick date correction
  - Second hand reset
- Jewels 24 jewels
- Time accuracy -15 ~ +25 second per day ( $23 \pm 2^{\circ}\text{C}$ )
- Shock resistance Shock-absorber device for balance staff
- Vibration frequency 6 vibrations per second (21,600 vibrations per hour)
- Duration time More than 50 hours
- Regulation hands unbalance
  - Hour : Less than  $1.50 \mu\text{N}\cdot\text{m}$  ( 150 mg·mm )
  - Minute : Less than  $1.25 \mu\text{N}\cdot\text{m}$  ( 125 mg·mm )
  - Second : Less than  $0.20 \mu\text{N}\cdot\text{m}$  ( 20 mg·mm )
- Antimagnetic DC :  $\geq 4800 \text{ A / m}$

#### 3. HANDLING AND CORRECTIONS

- 1) Crown at normal position
  - Clockwise : Manual winding
  - Counterclockwise : Free
- 2) Crown pulled out to 1st click
  - Clockwise : Free
  - Counterclockwise : Quick date correction
- 3) Crown pulled out to 2nd click
  - Time setting, second hand reset

#### 4. DIAL FIXED METHOD

The dial is fixed by two dial leg holes with eccentric pins

#### 5. METHOD OF TIME ACCURACY TEST

- Equipment to be used Witschi WATCH EXPERT
- Duration of measurement 20 seconds

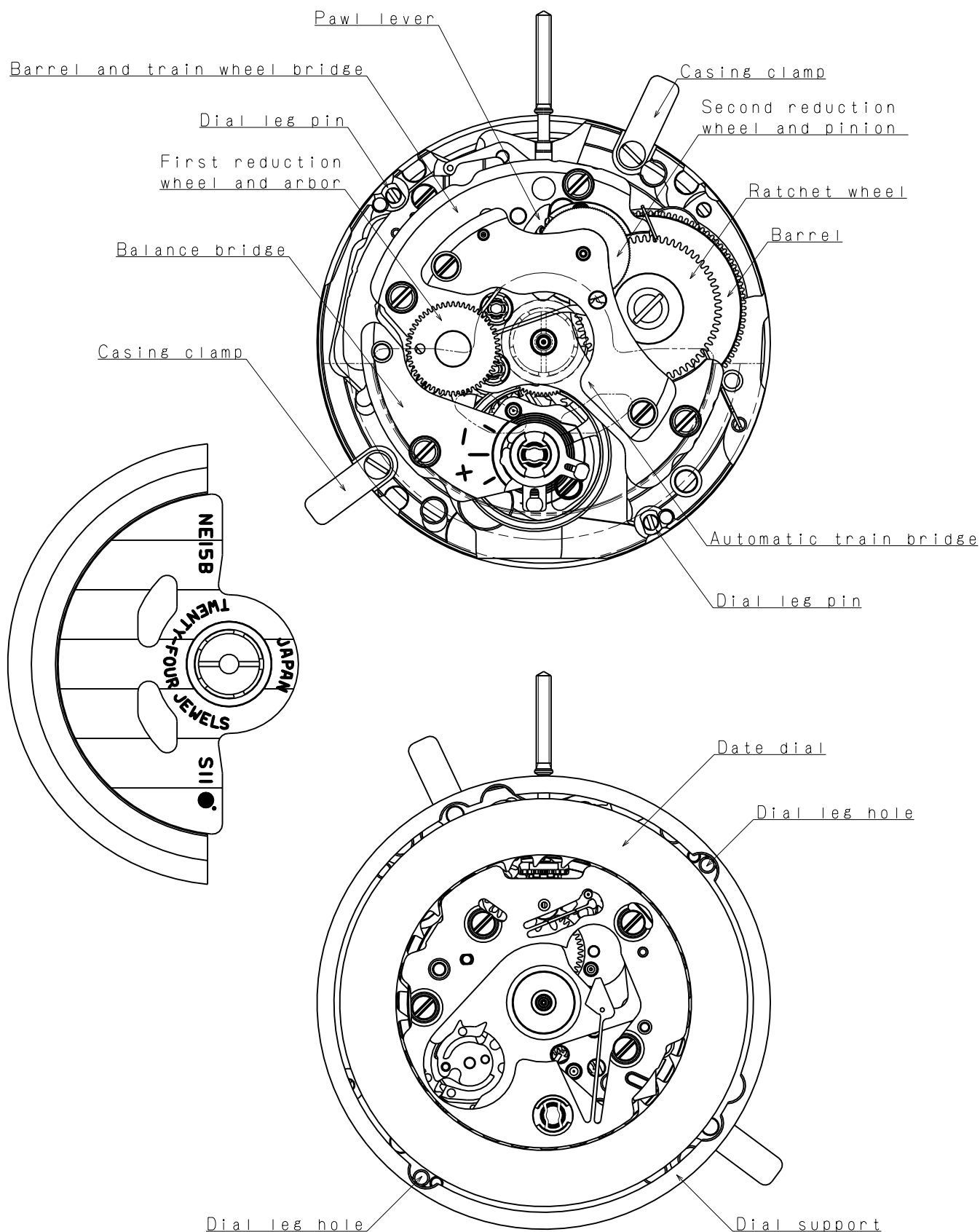
#### 6. FITTING FORCE FOR HANDS

- Hour hand : Less than 50 N
- Minute hand : Less than 50 N
- Second hand : Less than 30 N

#### 7. CASING

- The movement is fixed by the casing clamps
- \*1. Non-corresponding with Diver's watch

**\* All specifications are subject to change without notice.**



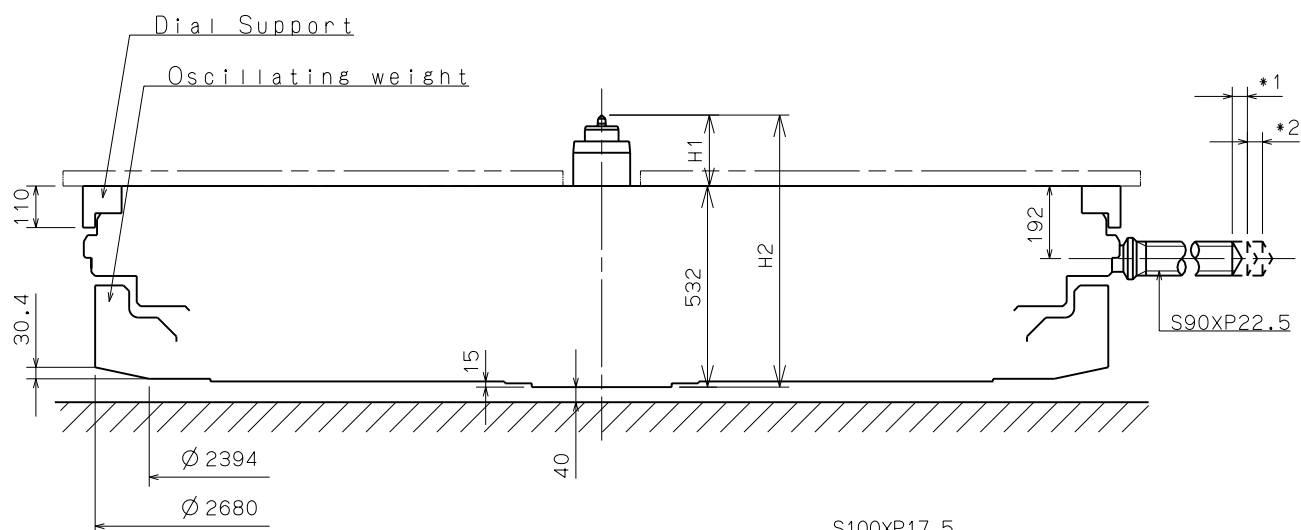
Scale : 3/1

Unit : 1=1/100mm

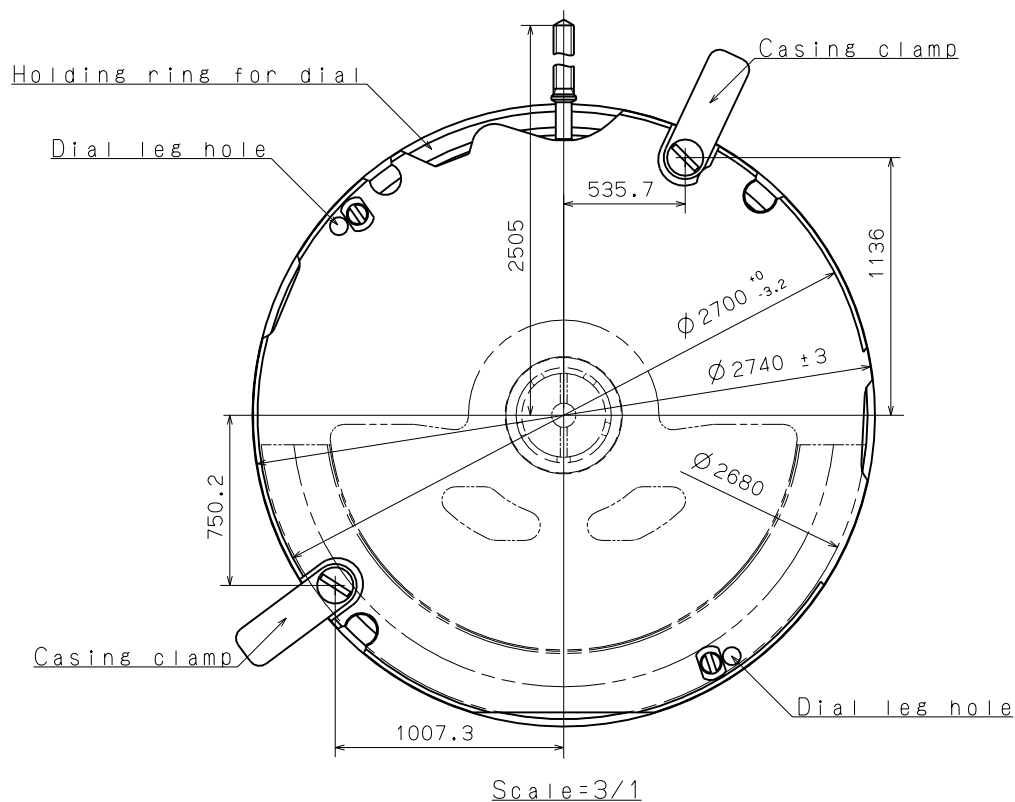
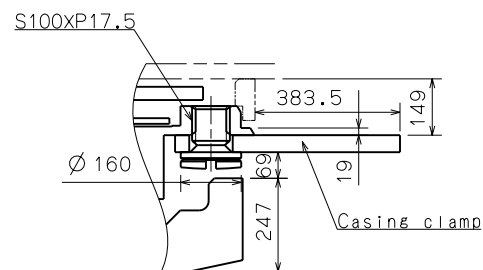
Version : 1

\*1. First pull out stroke 39.9

\*2. Second pull out stroke 40.0



Center post		TYPE M
Maximum height from dial support surface	H1	190.7
Total height incl. movement	H2	722.7



Scale=3/1

Scale : 5/1(3/1)

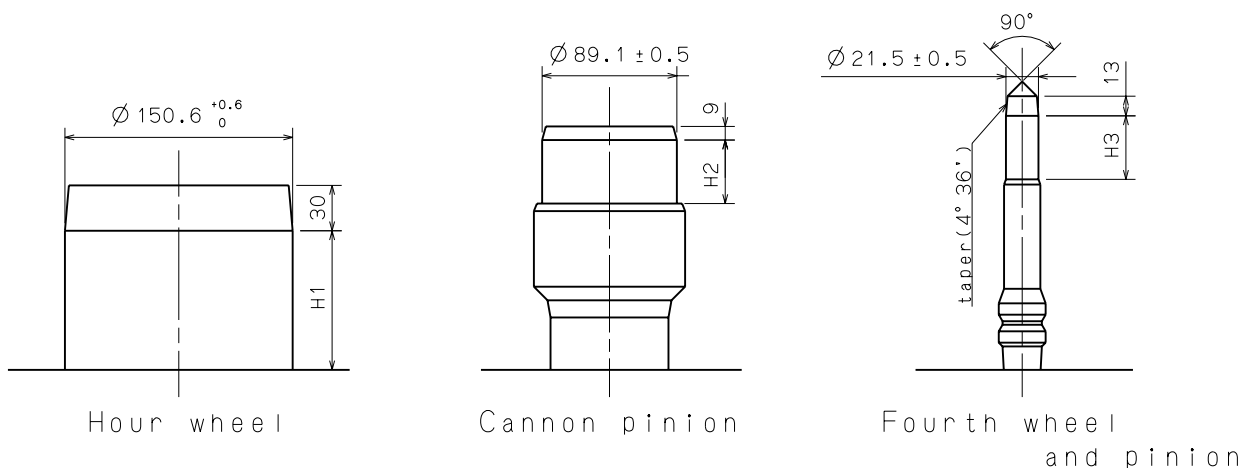
Unit : 1=1/100mm

Version:1

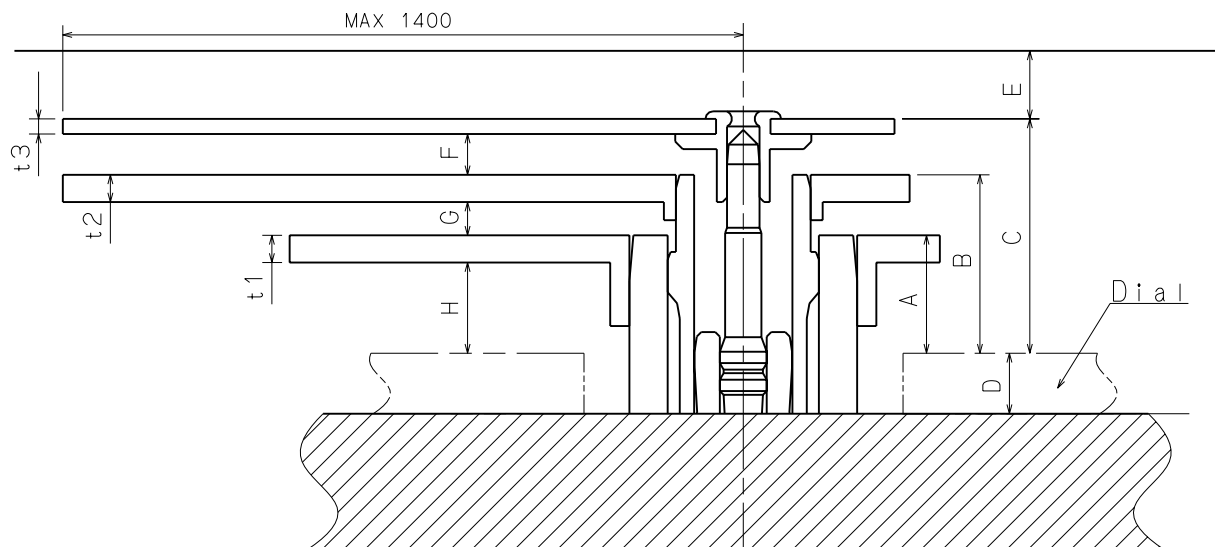
# Hand fitting

Cal. NE15B

Hour hand unbalance  $\leq 1.50\mu\text{N}\cdot\text{m}$  (150mg·mm)  
 Minute hand unbalance  $\leq 1.25\mu\text{N}\cdot\text{m}$  (125mg·mm)  
 Second hand unbalance  $\leq 0.20\mu\text{N}\cdot\text{m}$  (20mg·mm)



	Part. No.			Dimension		
	Hour wheel	Cannon pinion	Fourth wheel and pinion	H1	H2	H3
TYPE M	0273 182	0225 414	0241 010	88	42	42

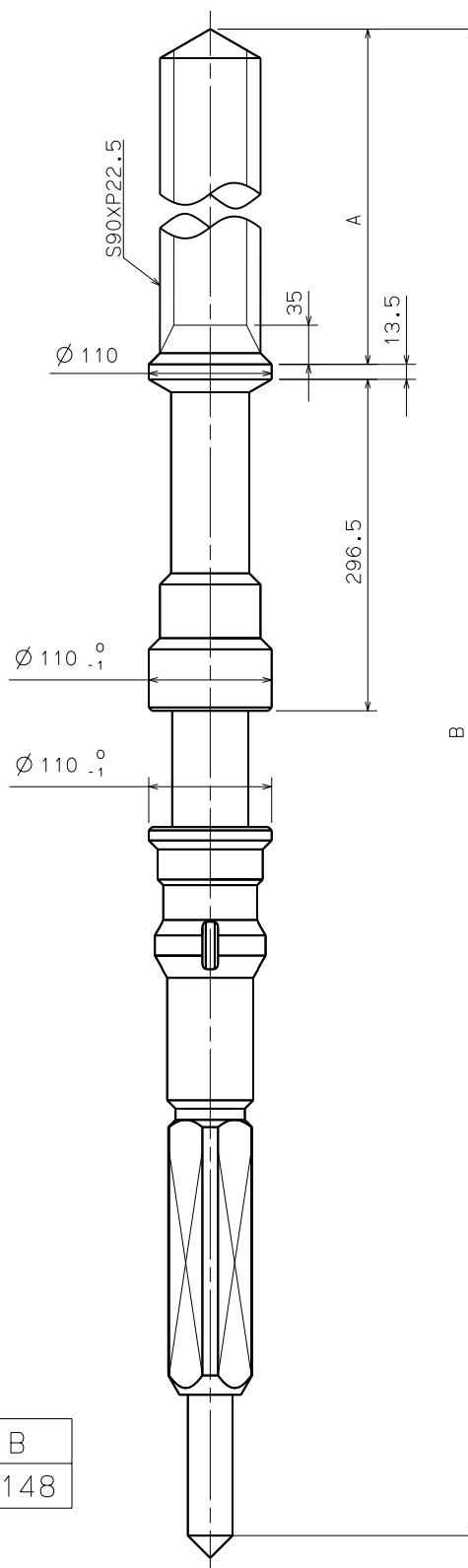


	A	B	C	D	E	F	G	H	t1	t2	t3
TYPE M	78	118	155	40	45	27	22	60	18	18	10

Scale : 20/1

Unit : 1=1/100mm

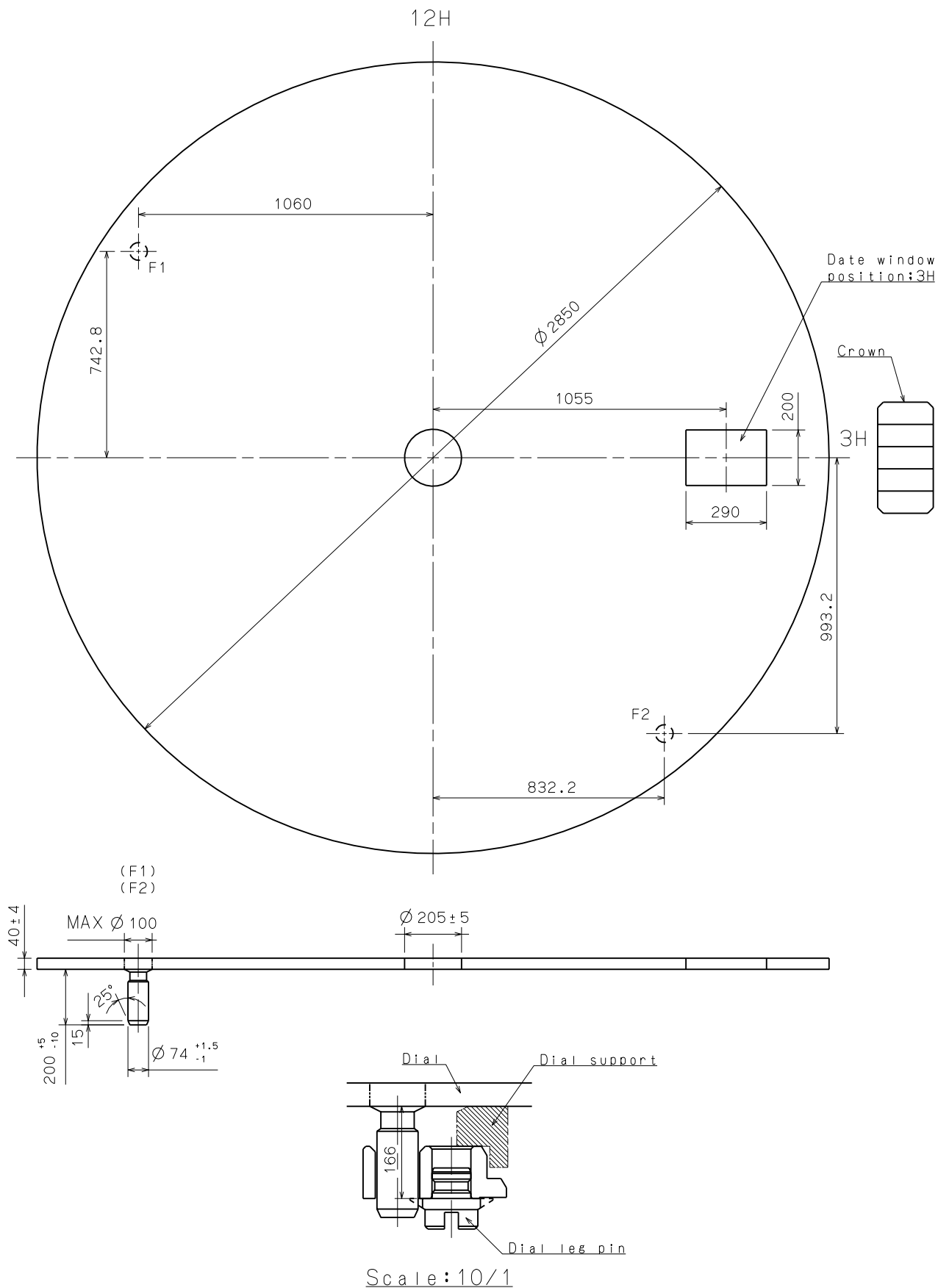
Version : 1



Parts No.	A	B
0351 183	1100	2148

Scale : 15/1  
Unit : 1=1/100mm

Version : 1



Scale : 5/1 (10/1)

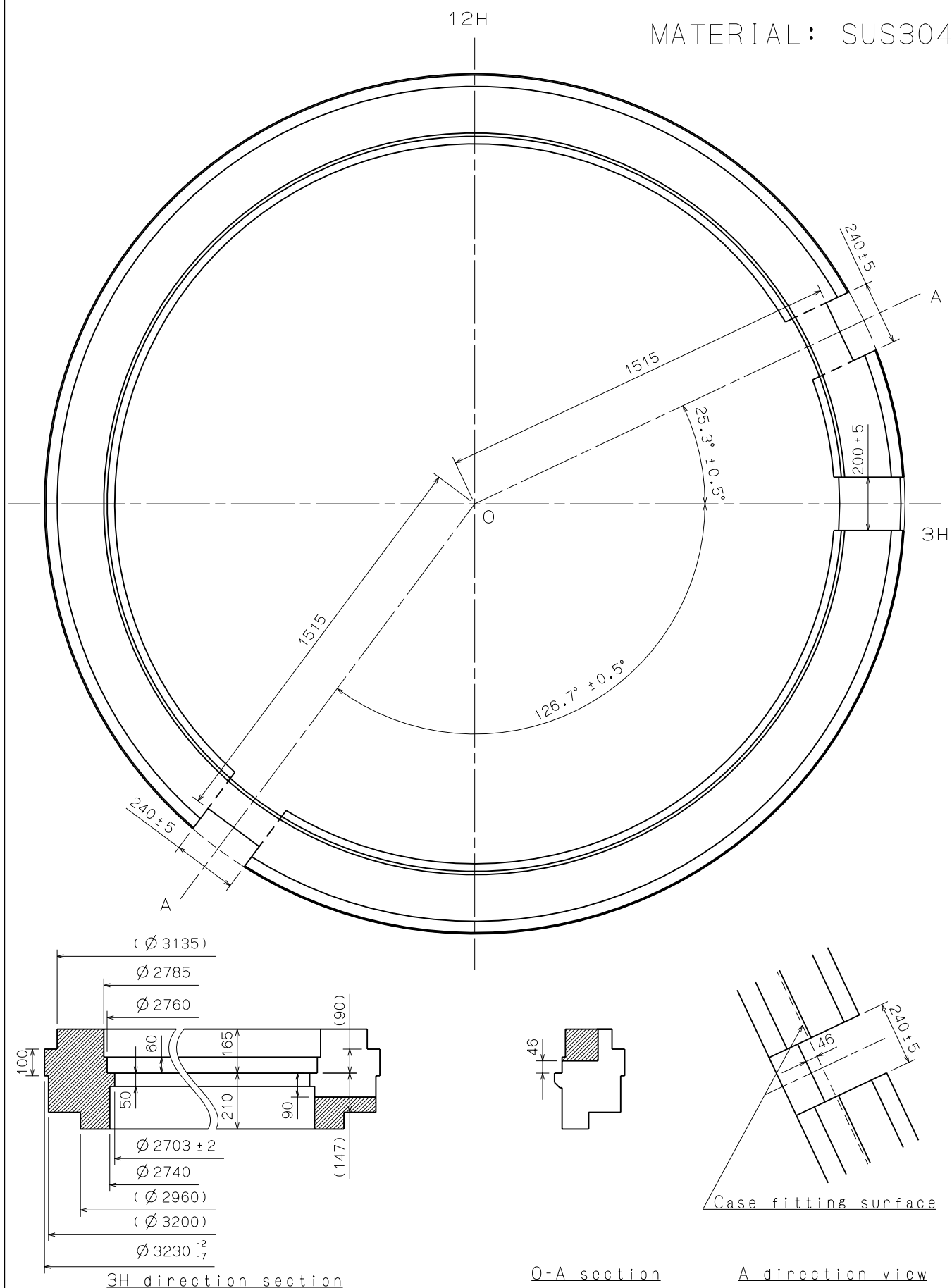
Unit : 1=1/100mm

Version : 1

# Casing ring

Cal. NE15B

MATERIAL: SUS304

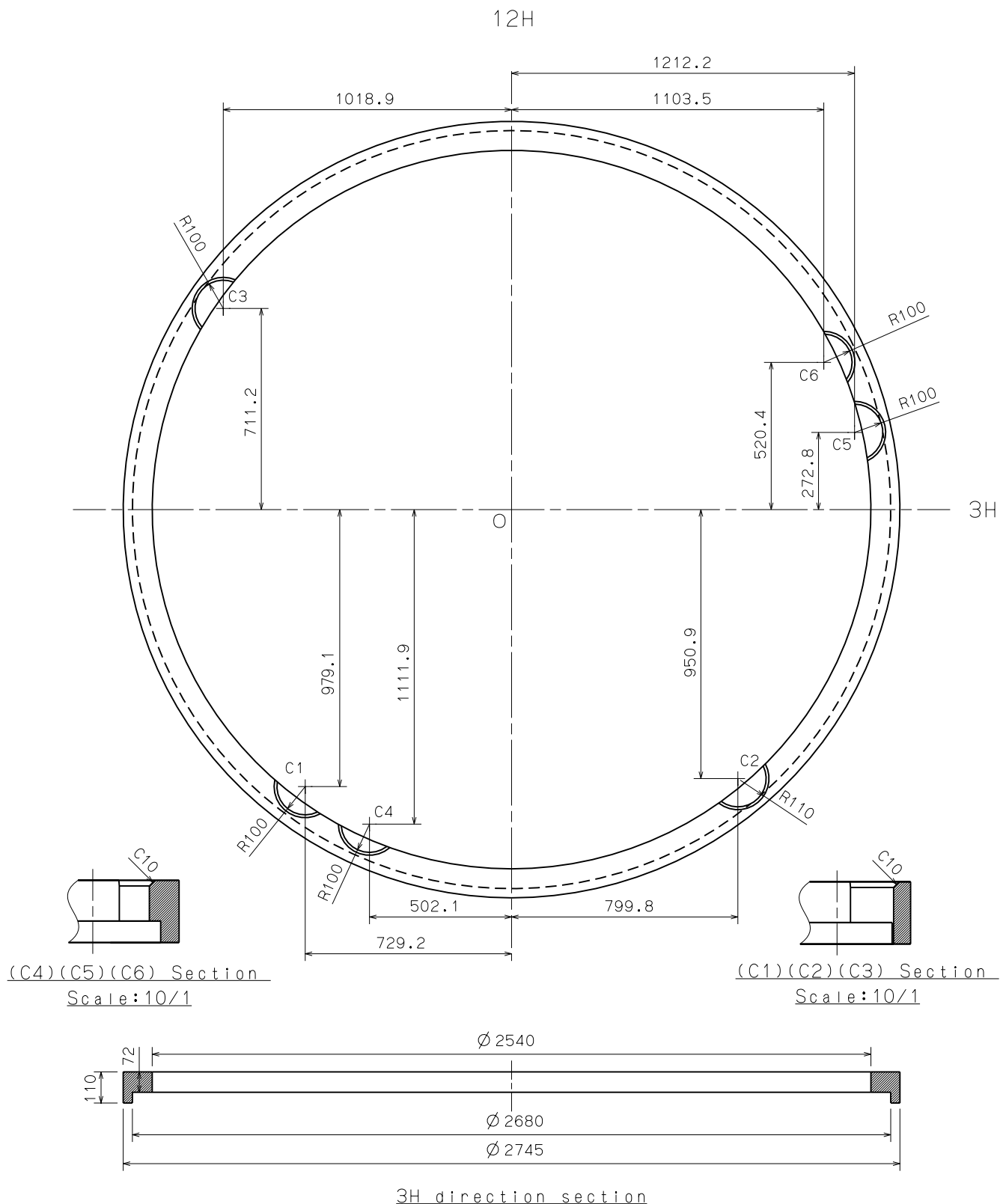


Scale : 5/1

Unit : 1=1/100mm

Version: 1





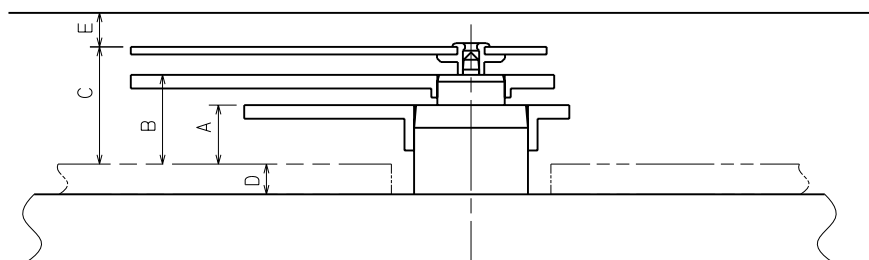
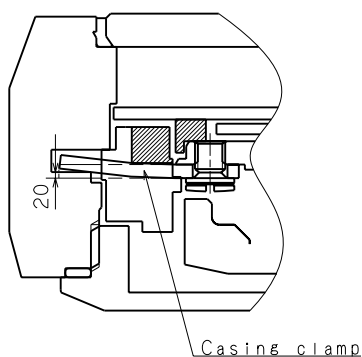
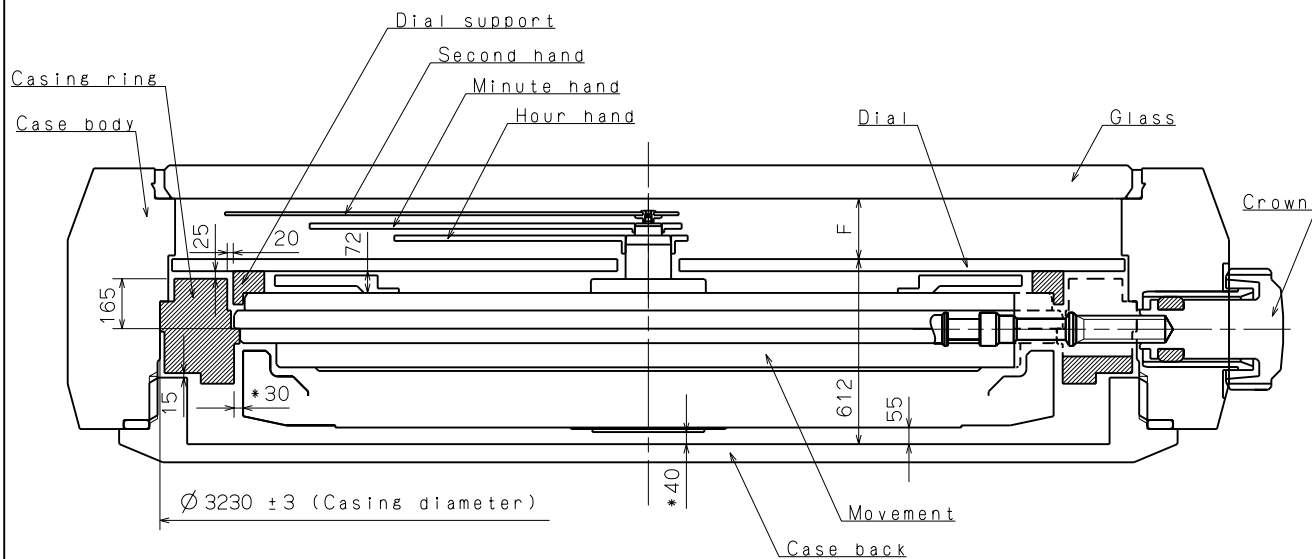
Scale : 5/1

Unit : 1=1/100mm

Version: 1

(Note for clearance \*30 and \*40)

It is STRONGLY RECOMMENDED that these clearance should be applied without modification.



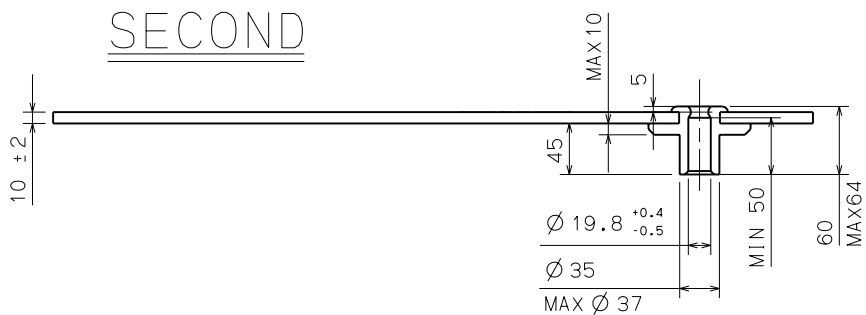
	A	B	C	D	E	F
TYPE M	78	118	155	40	45	200

Scale : -

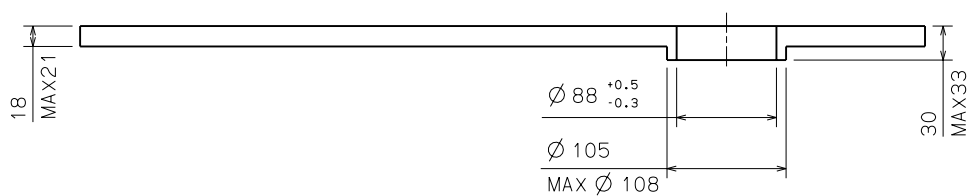
Unit : 1=1/100mm

Version : 1

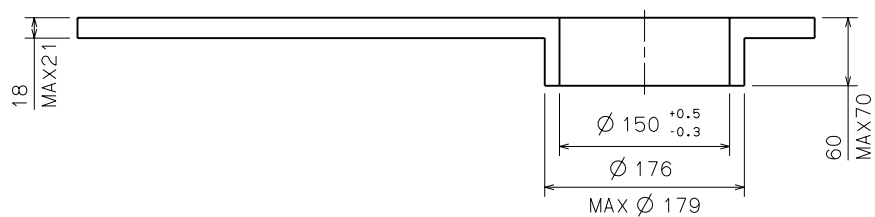
## SECOND



## MINUTE



## HOUR



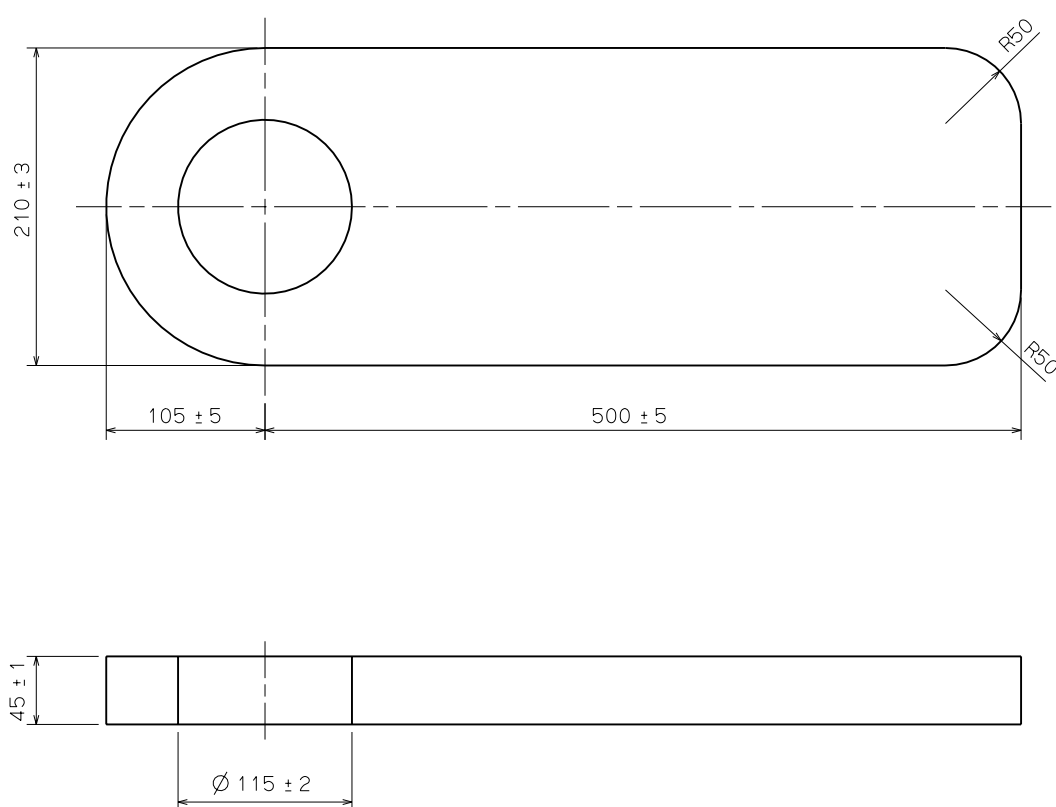
Scale : -

Unit :  $1 = 1/100\text{mm}$

Version : 1

# Casing clamp

Cal. NE15B



MATERIAL : SUS631-CSP3/4H  
HARDNESS : Hv500 $\pm$ 30

Scale : 20/1

Unit : 1=1/100mm

Version : 1