

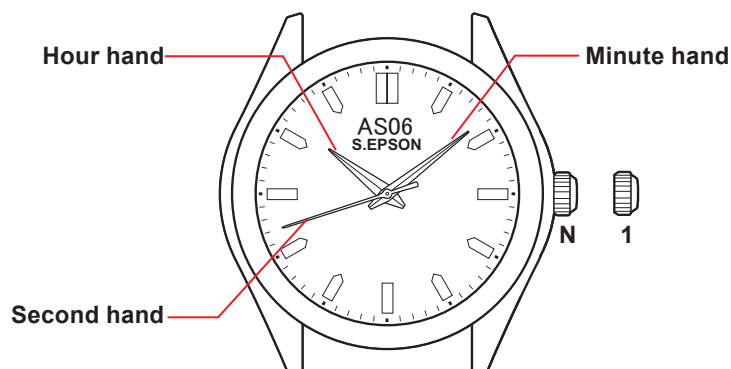
# CAL. AS06

3 HANDS

# 1/4 Instructions

## Features

- ◆ Hour, Minute and Second hands



Crown

N: Normal position  
1: First click position

Movement size	6 3/4 - 8'''
Outside Diameter	15.30mm (3H-9H) x 18.20 mm (12H-6H)
Casing Diameter	15.30mm (3H-9H) x 17.80 mm (12H-6H)
Height	3.05 mm

## How to charge and start the watch

### ◆ Charging the watch

- When you start the watch or when the energy remaining in the rechargeable battery is very low, charge it sufficiently by exposing the watch to light.

### ◆ Note

- It is not necessary to charge the watch fully. It is important, however, to charge the watch sufficiently, especially in the case of initial charging.

### ◆ Caution

#### Care in charging

- When charging the watch, do not place it too close to a hot light source such as a photoflash light, spotlight or incandescent light as this can greatly raise the watch temperature.
- When charging the watch by sunlight, do not leave it exposed to the sun for a long time, on the dashboard of a car, etc.. as this can greatly raise the watch temperature.
- Make sure the watch temperature does not exceed 50°C while charging, to avoid damage to the parts inside.



**S.EPSON Products**

JAPAN TECHNOLOGY & QUALITY

[www.timemodule.com](http://www.timemodule.com)

# CAL. AS06

3 HANDS

## 2/4 Instructions

### Guidelines for charging time

(Dial transparency is 40%)

			Time required (approx.)		
Illumination (lux)	Source of light	Environment	A	B	C
700	Fluorescent lamp	Inside office	-	45 hours	132 minutes
3,000		30w 20 cm	60 hours	4 hours	33 minutes
10,000	Sunlight	Cloudy	20 hours	1.5 hours	11 minutes
100,000		Fine weather	5 hours	15 minutes	2.5 minutes

<Reference> The illuminance of 1,000 Lx is 70cm under from 30W fluorescent lamp.

Condition A: Time required for full charge

Condition B: Time required for steady operation

Condition C: Time required for 1 day's charge

The above table provides only general guidelines.

When the watch is fully charged, it will continue to operate for about 2 months.



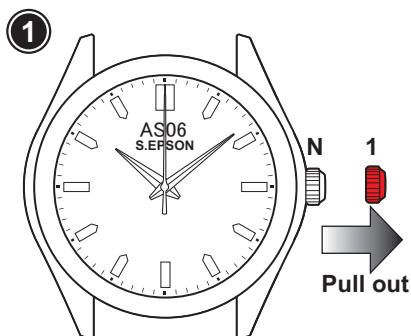
**S.EPSON Products**  
JAPAN TECHNOLOGY & QUALITY  
[www.timemodule.com](http://www.timemodule.com)

# CAL. AS06

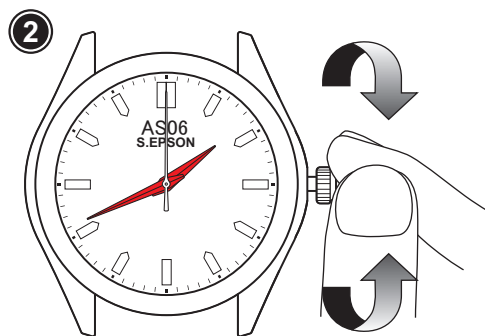
3 HANDS

## 3/4 Instructions

### How to set time

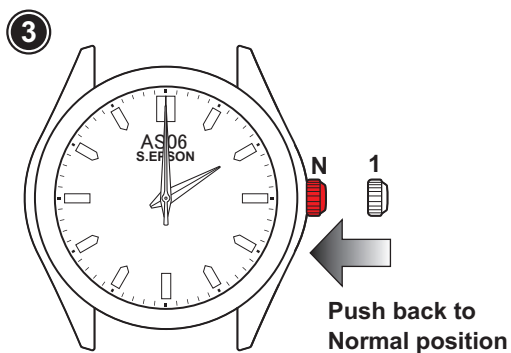


- Pull the crown out when the second hand is at the 12 o'clock position.



- Turn the crown to set the time.

*Note: When setting the minute hand, advance it 4 to 5 minutes ahead of the desired time and then turn it back to the exact minute(s.)*



- Push the crown back to the normal position.  
Confirm that the second hand begins to run.



**S.EPSON Products**  
JAPAN TECHNOLOGY & QUALITY  
[www.timemodule.com](http://www.timemodule.com)

# CAL. AS06

3 HANDS

## 4/4 Instructions

### Note

#### ◆ To prevent energy depletion

- Avoid covering the watch face with your clothing while wearing it.
- When the watch is not in use, leave it in a brightly lit place for as long as possible.
  - \* Make sure that the watch temperature does not exceed 50°C.

#### ◆ Notes on power supply

- This watch is provided with a rechargeable battery for exclusive use with the watch. Unlike with conventional battery-powered watches, therefore, battery replacement is not necessary.
- The solar cell is a clean energy source and has no adverse effect on the natural environment.

#### ◆ Caution

- Never insert a conventional silver oxide battery in your watch as it may explode, generate intense heat or catch fire. The watch is designed not to operate if such a battery is installed in it.



**S.EPSON Products**

JAPAN TECHNOLOGY & QUALITY

[www.timemodule.com](http://www.timemodule.com)